



# How to connect the signal base station to the battery





## Overview

---

Simply power on the base station, sync the camera within 10 feet, and use the Arlo app to complete setup in minutes. Ensure both devices are charged and in range for a seamless, secure connection every time. Power on the base station first to ensure it's ready for pairing.

Simply power on the base station, sync the camera within 10 feet, and use the Arlo app to complete setup in minutes. Ensure both devices are charged and in range for a seamless, secure connection every time. Power on the base station first to ensure it's ready for pairing.

You can set up a base station in different ways depending on the application, coverage area, degree of permanence versus mobility, and available infrastructure. Before you set up a base station, please see Base station operation guidelines. For construction applications, where machine and site.

ing Ooma is easy! This guide will walk you installing the Base Station and creating our Ooma account. You will finish by connecting the Ooma Battery Backup and testing your setup in different locations to find the best device online. Locate the seven-digit activation code printed on the battery is.

The Ring Alarm Pro Base Station is designed to be the hub of your home, with a Ring Alarm security system, an eero Wi-Fi 6 router,<sup>1</sup> and optional battery backup and backup cellular internet<sup>2</sup> add-ons available in case the power or internet go out. On its own, Alarm Pro is designed to serve as the.

The Base Station is the brains of your system. It sends alarm signals to the monitoring center\* with built-in cellular and Wi-Fi connections, a battery backup that lasts up to 24 hours, and a 100 dB siren. When a sensor on your system is triggered, it sends a signal to the Base Station, which.

When using the normal mode, follow the instructions in the battery compartment. Short press the link button in the battery compartment to enter pairing mode. The linking light on the base station will flash. During 3. Once on the linking base station successful, will flash.

In this guide, we'll delve into the step-by-step process of setting up an Arlo base



station, covering everything from initial setup and connection to configuring settings and optimizing performance. With these instructions, users can confidently embark on the journey of enhancing their home. How do I set up a base station?

Set up the base station using either the tripod or T-bar mounting method. You must use an external radio antenna kit for the internal 450 MHz or 900 MHz radio. To avoid interference between the 900 MHz radio and GPRS transmissions, do not mount the external radio antenna within 1 m (3.3 ft) of the GSM antenna.

What is a base station & how does it work?

The base station itself is the heart of the Arlo home security system, equipped with various ports and features designed to enhance your security setup. Key components include: Power adapter port: For connecting the base station to a power source.

How do I connect my alarm pro base station to the Internet?

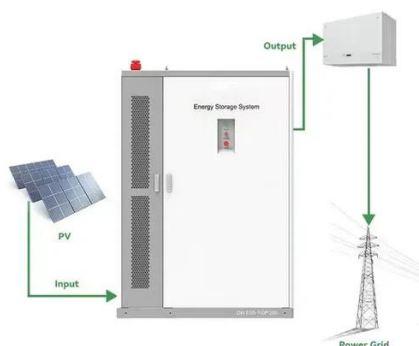
**INTERNET ACCESS:** You can connect your Alarm Pro Base Station to the internet using wifi or an Ethernet cable. You can also use cellular data using the 24/7 Backup Internet\* feature, available with a subscription.

Does the alarm pro base station have a backup battery?

**BUILT-IN BATTERY BACKUP:** The Base Station has an internal backup battery that will switch on when your power goes out. When the Alarm Pro Base Station is using the internal backup battery, it shuts down most services, including wifi, to conserve power.



## How to connect the signal base station to the battery



### [Common ways to set up a base station](#)

Connect the antennas to the receiver using the appropriate cables. The receiver uses its own integrated battery, or an external 12 V battery through the 12 V crocodile clips cable that are ...

### Base Station Quick Guide

When using the normal mode, follow the instruction compartment. Short press the link button in the battery aircraft to enter the aircraft to enable the linking aircraft body ...



### [How to Set up Arlo Base Station , 10 Easy ...](#)

In this guide, we'll delve into the step-by-step process of setting up an Arlo base station, covering everything from initial setup and ...



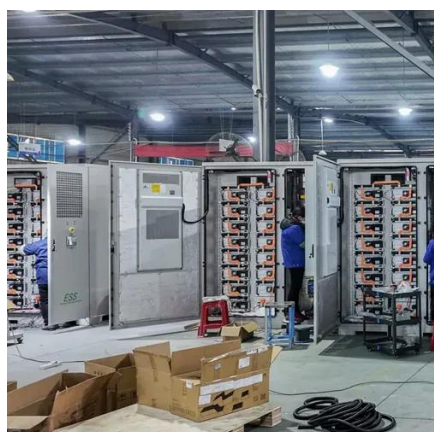
### [How Connect Arlo Camera to Base Station in 5 Easy Steps](#)

Connecting your Arlo camera to a base station is quick and straightforward when you follow the right steps. Simply power on the base station, sync the camera within 10 feet, and ...



### [How to install batteries in signal base stations](#)

Some of the most important things to consider in the battery installation guide include selecting the right type of battery, using protection systems such as fuses and BMS, proper wiring, and ...



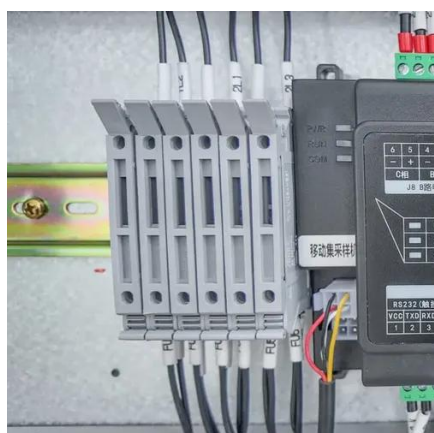
### [Ring Video Doorbell Setup and Installation Guide](#)

Press the Pairing button until the blue ring begins spinning. Then, use the Ring app to pair your Base Station to your Ring account. Once you've found your Base Station, connect ...



### [How to Set up Arlo Base Station , 10 Easy Methods \(2025\)](#)

In this guide, we'll delve into the step-by-step process of setting up an Arlo base station, covering everything from initial setup and connection to configuring settings and ...



### **Quick Start Guide**



Getting Started ing Ooma is easy! This guide will walk you installing the Base Station and creating our Ooma account. You will finish by connecting the Ooma Battery Backup and testing your ...



### [Base Station \(Gen 3\) Overview and Installation Guide](#)

Only use NiMH Rechargeable Batteries - never insert regular, alkaline batteries into your Base Station! Watch this video from our team of experts for a hands-on installation experience. Use ...

### [Base station Installation Instructions](#)

Installation Instructions To ensure optimal performance and connectivity of your base station, follow these setup instructions.



### [Setting Up and Using Your Ring Alarm Pro Base Station](#)

If you add one or more Ring Power Packs, your Alarm Pro Base Station will have full Ring Alarm and zero wifi functionality. Each Power Pack will give you up to 8 hours of power, or more.





## Contact Us

---

For catalog requests, pricing, or partnerships, please visit:

<https://www.asimer.es>

Phone: +34 910 56 87 42

Email: [info@asimer.es](mailto:info@asimer.es)

Scan the QR code to access our WhatsApp.

