



# How to install the base station battery





## Overview

---

To insert the batteries, open the battery cover, place the batteries as indicated and then replace the battery cover. When the handset is placed on the base station, the 3 battery bars scroll (if charge is needed). Allow 12 - 15 hours for the batteries to fully charge.

To insert the batteries, open the battery cover, place the batteries as indicated and then replace the battery cover. When the handset is placed on the base station, the 3 battery bars scroll (if charge is needed). Allow 12 - 15 hours for the batteries to fully charge.

The Base Station takes four (4) 1.2V, 1300mAh nickel-metal hydride (NiMH) rechargeable batteries. Regular alkaline batteries should never be inserted into the Base Station, as they may damage the device. Once you have acquired the necessary NiMH rechargeable batteries, you can follow the steps.

Where can the battery system be installed?

What are the electrical and spacing requirements for Base equipment?

What do I need to know on the day of installation?

Will I need a soft-start on my A/C?

What does that entail?

What safety precautions does Base take?

Safety & Reliability You Can Trust.

Learn more about how Base Power is installed in a member's home. Our team handles everything—from permits to final setup—making it simple to get powerful home backup without the usual complexity. [Learn more about how Base Power is installed in a member's home. Our team handles.](#)

On the drive, open the "SimpliSafe" application. • Follow the on-screen instructions. the instructions in this Owner's Manual. Need help?



Do you have a question about the Base Station and is the answer not in the manual?

Page 1 • The Easy Setup Wizard will automatically appear. Tip: If the welcome.

Place your product close enough to the telephone and mains power sockets so that the cables will reach. To properly install the base station, plug the line cord and the power cable into the base station. Plug the cord and the cable into the wall. If you have a broadband DSL Internet connection.

The Base Station requires specific rechargeable batteries; and the SimpliCam® Wired Indoor Camera only functions when connected to power, rather than being battery operated. The Smart Alarm Wireless Indoor Security Camera has non-replaceable batteries within it, and can be used on battery or. Do I need to replace my base station's batteries?

If you're not certain which system you have, see the Which Version of the SimpliSafe® System Do I Have article. You will likely never need to replace your Base Station's batteries as they are rechargeable and meant to last. The Base Station takes four (4) 1.2V, 1300mAh nickel-metal hydride (NiMH) rechargeable batteries.

How many batteries does the base station take?

The Base Station takes four (4) 1.2V, 1300mAh nickel-metal hydride (NiMH) rechargeable batteries. Regular alkaline batteries should never be inserted into the Base Station, as they may damage the device. Once you have acquired the necessary NiMH rechargeable batteries, you can follow the steps below to replace them:.

Can you put alkaline batteries in a base station?

NEVER insert regular alkaline batteries into the Base Station as they may damage the device. Plug your Base Station back into power. Was this helpful?

Does your Keypad look like the one pictured to the left?

.

How to install a battery?

Battery installation can be efficient and safe by following the proper steps. Here is what you need to prepare before installing the battery. Check the voltage and capacity, select the appropriate battery type, and check the manufacturer's



instructions, as each type of battery has different installation guidelines.



## How to install the base station battery

---

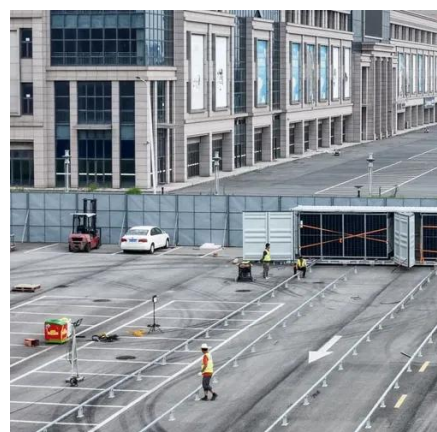


### [Installation and hardware . Base Help Center](#)

This article explains how you can simulate a power outage and test your Base battery system once your battery is installed.

### [SIMPLISAFE BASE STATION OWNER'S MANUAL Pdf Download](#)

o Outdoor Installation: Install within 100 ft of your Base Station. Slip the backing bracket off of your Siren and use the included screws to mount the backing under an eave or an awning.



### [The Ultimate Battery Installation Guide For Beginners](#)

Whether you are an experienced technician or just a beginner, this step-by-step battery installation guide will help ensure that your battery has a long life and optimal performance.

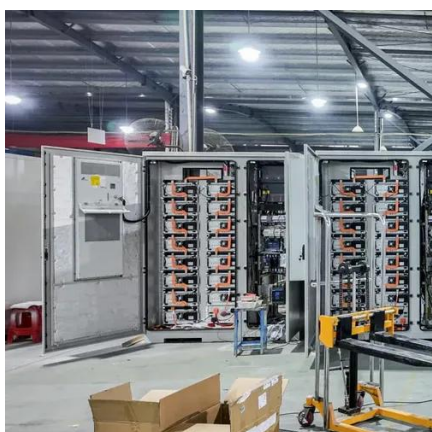
### [Powering the Base Station, Important . Motorola MD451SYS](#)

To install the batteries in the base station: 1. With the bottom of the base facing you, press the cover latch with a screwdriver to lift and remove the battery cover.



### **SIMPLISAFE BASE STATION OWNER'S ...**

o Outdoor Installation: Install within 100 ft of your Base Station. Slip the backing bracket off of your Siren and use the included screws to mount ...



### **How To Replace Base Station Batteries , SimpliSafe Support Home**

You will likely never need to replace your Base Station's batteries as they are rechargeable and meant to last. The Base Station takes four (4) 1.2V, 1300mAh nickel-metal hydride (NiMH) ...



### [How to Replace Batteries in SimpliSafe® Devices](#)

To change your Motion Sensor Gen 2 battery, slide the sensor up and off its bracket. Then, replace the battery and slide it back onto its bracket. If the sensor does not come back online ...



### [How to Replace Batteries in SimpliSafe® Devices](#)



To change your Motion Sensor Gen 2 battery, slide the sensor up and off its bracket. Then, replace the battery and slide it back onto its bracket. If the ...



### [Base Power Setup: Home Battery Installation Process](#)

Learn more about how Base Power is installed in a member's home. Our team handles everything--from permits to final setup--making it simple to get powerful home backup without the usual

### [Where can the battery system be installed? What are the ...](#)

Typically, the Base Power system is installed near the electric meter, with 3ft of space allocated on the wall for mounting the automatic transfer switch, followed by a 3ft x 3ft ground footprint ...



### [How To Replace Base Station Batteries](#)

You will likely never need to replace your Base Station's batteries as they are rechargeable and meant to last. The Base Station takes four (4) 1.2V, ...

### [The Ultimate Battery Installation Guide For ...](#)



Whether you are an experienced technician or just a beginner, this step-by-step battery installation guide will help ensure that your battery has a long ...



### [SIMPLISAFE BASE STATION SETUP MANUAL Pdf Download](#)

View and Download SimpliSafe Base Station setup manual online. Base Station accessories pdf manual download.

### [Base Power Setup: Home Battery Installation Process](#)

Learn more about how Base Power is installed in a member's home. Our team handles everything--from permits to final setup--making it simple to get powerful home backup without ...



### **Installing the base station , Philips DECT 627, DECT 629 guide**

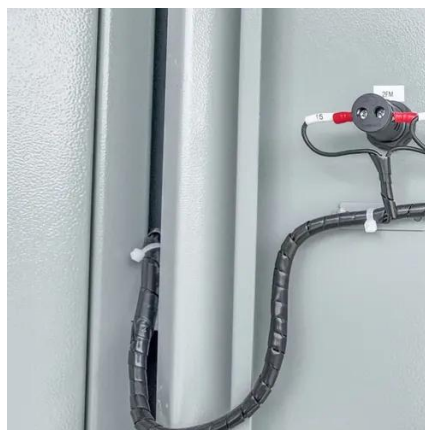
To insert the batteries, open the battery cover, place the batteries as indicated and then replace the battery cover. When the handset is placed on the base station, the 3 battery bars scroll (if ...



### [SIMPLISAFE BASE STATION SETUP MANUAL ...](#)



View and Download SimpliSafe Base Station setup manual online. Base Station accessories pdf manual download.





## Contact Us

---

For catalog requests, pricing, or partnerships, please visit:

<https://www.asimer.es>

Phone: +34 910 56 87 42

Email: [info@asimer.es](mailto:info@asimer.es)

Scan the QR code to access our WhatsApp.

