



How to turn off the backup power supply of the base station





Overview

Powering off: Press and hold power buttons to shut down corresponding output. Note: Press and hold any button for at least 3s, the unit will be off. Setting Mode: When the AC power is off and LCD screen is on, press and hold AC and DC power buttons simultaneously for 2s.

Powering off: Press and hold power buttons to shut down corresponding output. Note: Press and hold any button for at least 3s, the unit will be off. Setting Mode: When the AC power is off and LCD screen is on, press and hold AC and DC power buttons simultaneously for 2s.

Homeowners with solar panels, factory managers optimizing energy costs, and even coffee shop owners using battery backups need to know when and how to turn off the energy storage power supply safely. Want your article to rank higher than a kangaroo on caffeine?

Here's the secret sauce: Answer.

R button to start the AC180P. When AC180P is on, press this button to turn on/off the LCD screen. Press and hold the button for more than 2 s in right corner of the screen. Under Setting mode, press the AC power button mode is disabled by default. To enable it, press and hold the AC power button for.

Note: Please turn on the DC power to enable the wireless charging. Press any button, the LCD screen will stay on for 60 seconds. Powering off: Press and hold power buttons to shut down corresponding output. Note: Press and hold any button for at least 3s, the unit will be off. Setting Mode: When.

How does your Base battery work?

How does it connect to the grid?

What happens during an outage?

This guide covers everything you need to know about how your Base battery operates, protects your home, and supports the power grid. You'll also find answers to common battery myths and top tips to help.



The steps to mute battery beeping are the same for all battery backup units. If you did not get a beep or flashing lights, press and hold the Alarm silence button and the emergency use button together for 10 seconds. Note: The reboot will temporarily disrupt all your fios services and take between.

Plug the power cord into the back port of the Base, and then into the electrical outlet. While your Base is starting up, open the ADT+ app and log in. If you have not already created your ADT+ account, open the app and log in with the email address you used when placing your order. Follow the. What is a backup power system?

This style of backup power system involves installing technology that automatically switches your energy usage over to a backup power source when an outage occurs. This means that the system is ready to operate (make) before an outage has occurred (break) and that it functions seamlessly without manual assistance.

What is a backup power source?

*Note, backup power sources can also power appliances directly using an extension cord. This style of backup power system involves installing technology that automatically switches your energy usage over to a backup power source when an outage occurs.

How to remove a battery backup unit from a wall outlet?

1. After unplugging the battery backup unit from your wall outlet, open the battery compartment. 2. Remove the plug connector with the red and black cables by pinching and sliding it out of its location. 3. Gently disengage the retaining clips that hold the battery in place and remove the battery. 4.

What is a battery backup unit (BBU)?

The Battery Backup Unit (BBU) provides power so that you will be able to make any calls from your home phone. The Belkin BBU will plug directly into the Residential Gateway. Provides up to 4 hours of backup power. Unit includes a Sealed Lead Acid (SLA) battery.



How to turn off the backup power supply of the base station



Bluetti EB3A

When not using the unit for extended periods of time, power off the unit and disconnect the AC adapter from the outlet. Charge the unit to 80% SOC every 3-6 months for long-term storage.

[Management and maintenance of base station ...](#)

The setting value of the primary and secondary power-off of the switch power supply: It should be set according to the type of base ...



Why and How to Turn Off the Energy Storage Power Supply: A ...

This article isn't just for engineers in hard hats. Homeowners with solar panels, factory managers optimizing energy costs, and even coffee shop owners using battery ...

Backup Power Installation Guide

This style of backup power system involves switching your electric usage over to a backup power source using an extension cord, a manual transfer switch or an automatic transfer switch.



Management and maintenance of base station switching power supply

The setting value of the primary and secondary power-off of the switch power supply: It should be set according to the type of base station, the distance, the battery capacity ...



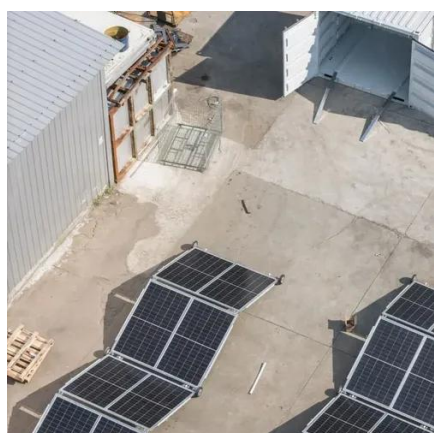
What does the error "Power Outage" mean? , SimpliSafe Support ...

In the event that you lose power, your Base Station has four (4) NiMH (nickel-metal hydride) rechargeable batteries that can keep your system powered for up to 24 hours. During this ...



[How the Base battery works: A complete guide to ...](#)

Finding the breakers that control these appliances and switching them off during outages can substantially extend battery life. It's helpful to keep a ...



AC180P Portable Power Station



Press the AC and DC power buttons at the same time to exit Setting mode. Note: If you do not perform any operation in 1 minute, AC180P will exit Setting mode automatically and no ...



[Frontier Internet Battery Backup Guide](#)

Slide MICRO BBU Battery Pack onto MICRO BBU Power Supply until Battery Pack becomes fully flush with the top of the Power Supply. You should hear a "click" when the Battery Pack is fully ...



[How the Base battery works: A complete guide to grid ...](#)

Finding the breakers that control these appliances and switching them off during outages can substantially extend battery life. It's helpful to keep a list of power-guzzling appliances before ...



ADT Smart Home Security

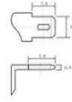
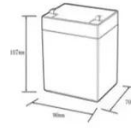
The ADT Base will require AC power, so an outlet should be available within 5 feet. The outlet must not be controlled by a switch and must provide continuous power.



[Battery Backup Information , Verizon](#)



If you did not get a beep or flashing lights, press and hold the Alarm silence button and the emergency use button together for 10 seconds.
Note: The reboot will temporarily disrupt all ...



12.8V6Ah

Nominal voltage (V):12.8
Nominal capacity (Ah):6
Rated energy (Wh):76.8
Maximum charging voltage (V):14.6
Maximum charging current (A):6
Floating charge voltage (V):13.6-13.8
Maximum continuous discharge current (A):10
Maximum peak discharge current @10 seconds (A):20
Maximum load power (W):100
Discharge cut-off voltage (V):10.8
Charging temperature (°C):-50
Discharging temperature (°C):-20-+60
Working humidity: <95% R.H (non condensing)
Number of cycles (25 °C, 0.5c, 100%doD): >2000
Cell combination mode: 32700-4s1p
Terminal specification: T2 (5.3mm)
Protection grade: IP65
Overall dimension (mm):50*70*107mm
Reference weight (kg):0.7
Certification: un38.3/msds



Contact Us

For catalog requests, pricing, or partnerships, please visit:

<https://www.asimer.es>

Phone: +34 910 56 87 42

Email: info@asimer.es

Scan the QR code to access our WhatsApp.

