



# How to turn on the power of a battery cabinet individually





## Overview

---

To activate the backup energy storage cabinet during a power outage, follow these steps: 1. Locate the backup energy storage cabinet, 2. Ensure the cabinet is charged, 3. Power down non-essential devices, 4. Flip the power switch to the ON position, 5. Connect essential devices to.

To activate the backup energy storage cabinet during a power outage, follow these steps: 1. Locate the backup energy storage cabinet, 2. Ensure the cabinet is charged, 3. Power down non-essential devices, 4. Flip the power switch to the ON position, 5. Connect essential devices to.

This video walks through the correct power-on procedure for JNTech energy storage battery cabinets. Following proper start-up steps ensures system safety, stable operation, and longer service life — ideal for installers, EPCs, and O&M teams worldwide. Show less This video walks through the correct.

**Special Symbols** The following are examples of symbols used on the UPS or accessories to alert you to important CAUTION information: Batteries can present a risk of electrical shock or burn from high short-circuit current. Observe proper precautions. Servicing should be RISK OF ELECTRIC SHOCK -.

This installation manual provides instructions and recommendations for installing and commissioning the Generac PWRcell® Battery. The PWRcell Battery is designed to house compatible lithium ion battery modules, and connects directly to the PWRcell Inverter and other REbus™ compatible components of.

On behalf of everyone at Eaton, we thank you for partnering with us, for trusting us to maintain your business continuity and for preventing downtime at your facility. Our suite of backup power, power distribution and power management products are designed to protect you from a host of threats.

It is very important to read, understand and follow the battery procedures in this manual. Also note all SAFETY PRECAUTIONS before beginning the installation of this system or replacing the batteries. If there are any questions, concerns or precautions that are not clearly understood or stated in.

uction of battery cabinets. The battery cabinets of this series are high quality



products, carefully designed and manufactured to meet the needs of the battery cabinet.  
Please read all instructions before operating the BATTERY CABINET and save this WITH ALL SAFETY INSTRUCTIONS when servicing batteries. Battery.



## How to turn on the power of a battery cabinet individually



### How to activate the backup energy storage cabinet during a power ...

The fundamental mechanisms involved in activation generally entail connecting the cabinet to a power source, configuring its settings, assessing the connection to essential ...

### Installation and Owner's Manual

Individual operating habits and usage may contribute to the need for additional maintenance or service. This installation manual provides instructions and recommendations for installing and ...



### BATTERY CABINET USER MANUAL

If a second battery cabinet is present, repeat the procedure to install wires connecting the terminals on the second cabinet to the TB2 terminals (of each pole of the terminal block) on ...

### [755-00086 R02 BC16 MITSUBISHI MANUAL](#)

The BC16 battery cabinet is equipped with four casters, two swivel types in front and two rigid types in the back. Move the cabinet into the desired location and lock the front casters.



### [Eaton 9395XC UPS and Samsung Gen 3 Battery Cabinet ...](#)

The installation manuals of the UPS and battery cabinet describe how to install and operate the Power Expert UPS and battery cabinets. Read and understand the procedures described in ...



### [BPC BPC227-01 USER MANUAL Pdf Download , ManualsLib](#)

View and Download BPC BPC227-01 user manual online. POWER GEM PLUS RT 1 - 3kVA BATTERY CABINET. BPC227-01 ups pdf manual download.



### [Eaton Samsung Gen 3 Battery Cabinet Installation and ...](#)

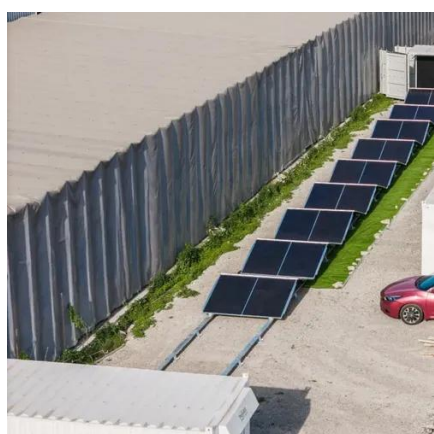
Control wiring can be routed through the sides of the battery cabinets in side by side configurations or through the top of the battery cabinets using conduit in standalone ...



### [Energy Storage Battery Cabinet , Power-On Operation Guide](#)



This video walks through the correct power-on procedure for JNTech energy storage battery cabinets.



### [Security Plus Extended Battery Cabinet Instruction Manual](#)

Use the power cord that is included with the battery cabinet to make this connection. The battery cabinet will not be able to charge its batteries without this connection.

### [Powerware 9390 Integrated Battery Cabinet \(Models IBC-S ...](#)

Route the ground wire (from the field kit) from the ground stud in one battery cabinet, under the lower battery tray and through the cabinet-to-cabinet cable access area in the side of the ...





## Contact Us

---

For catalog requests, pricing, or partnerships, please visit:

<https://www.asimer.es>

Phone: +34 910 56 87 42

Email: [info@asimer.es](mailto:info@asimer.es)

Scan the QR code to access our WhatsApp.

