



# How to view the output current of the battery cabinet





## How to view the output current of the battery cabinet



### [Vertiv Liebert® APM2 Modular EBC User Manual](#)

After the battery cabinet and the UPS power cabinet are aligned, open the front door panel of the UPS power cabinet. Use M10 x 30 screws (2 quantity) to connect and fasten the battery ...

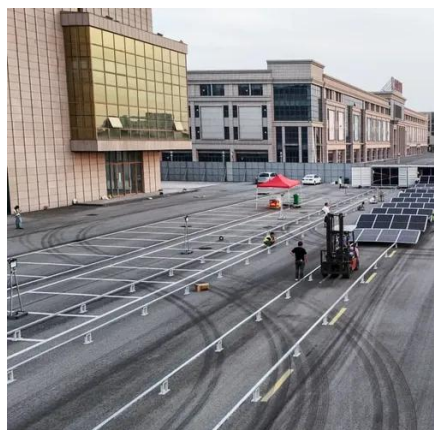
### [UBC80 Battery Cabinet Installation, Operation.](#)

Install the main POS and NEG cables from the output circuit breaker to the correct battery posts on the designated battery units shown in the provided battery system schematic.



### [Mitsubishi Electric Power Products, Inc. BC43 Battery ...](#)

Battery cabinets that are not supplied with an incorporated DC output disconnect device must have an appropriate disconnect device provided external to the cabinet.



### **Tripp Lite**

During the acceptance discharge test, monitor the cabinet system output voltage at the cabinet, the output current and discharge time as a back-up to monitoring at the critical load.



2MW / 5MWh  
Customizable



### VERTIV LIEBERT EXM 480V USER MANUAL Pdf Download , ManualsLib

View and Download Vertiv Liebert EXM 480V user manual online. External Battery Cabinet. Liebert EXM 480V ups pdf manual download.

#### U-ENM00044

Connect main cables from the UPS DC input terminals to the battery cabinet output. Refer to the supplied battery cabinet drawings for information on the battery cabinet output connections.



### [Eaton Samsung Gen 3 Battery Cabinet Installation and ...](#)

Control wiring can be routed through the sides of the battery cabinets in side by side configurations or through the top of the battery cabinets using conduit in standalone ...



### [-48 VDC Battery Cabinet Installation and User Manual ...](#)



Verify that no current will flow when the battery is connected or disconnected by opening battery disconnects (if available) or adjusting the system to match battery voltage.



### [Eaton 93PM Gen 2 UPS and Samsung Gen 3 Battery ...](#)

The installation manuals of the UPS and battery cabinet describe how to install and operate the Eaton 93PM Gen 2 UPS and battery cabinets. Read and understand the procedures described ...

### [Liebert® EXS External Battery Cabinet Installer/User Guide](#)

For battery cabinets that are connecting to a Vertiv™ Liebert® EXS UPS, see Figure 2.1 on page 8, cables will run from the positive, negative and neutral busbars of the adjacent battery ...



### [VERTIV LIEBERT EXM 480V USER MANUAL Pdf ...](#)

View and Download Vertiv Liebert EXM 480V user manual online. External Battery Cabinet. Liebert EXM 480V ups pdf manual download.



## Contact Us

---

For catalog requests, pricing, or partnerships, please visit:

<https://www.asimer.es>

Phone: +34 910 56 87 42

Email: [info@asimer.es](mailto:info@asimer.es)

Scan the QR code to access our WhatsApp.

