



Huawei Communication Green Base Station Parts





Overview

What is a Huawei base station?

Let's dive into a technical explanation. A base station, also known as an eNodeB (for 4G LTE) or gNodeB (for 5G NR) in Huawei's terminology, is a piece of equipment that facilitates wireless communication between user equipment (UE) like smartphones, tablets, and IoT devices, and the core network of the telecommunications provider.

What systems does Huawei offer?

Huawei provides comprehensive management and control systems, such as Huawei's U2000 or Huawei's Cloud BTS. These systems enable operators to monitor, configure, and manage base stations remotely, ensuring optimal network performance and reliability.

What is a base station antenna system?

Antenna System: At the heart of a base station is the antenna system. This system radiates and receives radio frequency (RF) signals to and from mobile devices.

What is a base station Power Supply Unit (PSU)?

Power Supply Unit (PSU): This provides the necessary electrical power to operate the base station components. It ensures that all parts of the base station have a consistent and reliable power source. **Backhaul Interface:** This is the connection between the base station and the core network.



Huawei Communication Green Base Station Parts



Huawei LTE Base Stations

Shop high-quality Huawei LTE base stations for reliable 4G and 5G communication. Enjoy advanced features and robust performance for your telecom needs.

[Huawei RAN \(Base Station\) Product Catalogue](#)

Catalogue of all huawei RAN (base station) parts. All information of BBU/RRU/AAU. Please contact us for pricing and more specs.



[DBS5900 Distributed Base Stations -- Huawei...](#)

The distributed architecture is adopted to separate the RF unit part of the base station from the baseband unit part, connecting the two parts ...

huawei base station

A Huawei base station is a critical component in modern telecommunications networks, specifically in cellular networks like 4G LTE and 5G NR. Let's dive into a technical ...



ESS



Base Station

Huawei 3G, 4G/LTE, 5G Wireless DBS BBU+RRU, Huawei Core Network, OptiX OSN8800, OSN9800 Reseller. Large inventories of Huawei EOL spare parts.



[DBS5900 Distributed Base Stations -- Huawei Enterprise](#)

The distributed architecture is adopted to separate the RF unit part of the base station from the baseband unit part, connecting the two parts through optical fiber, which minimizes the feeder ...



UBBPC

We stock a wide range of carrier and data networking parts, including the UBBPC - Huawei Base Station.

[Huawei Green Antenna Series Wins GSMA](#)



PRESS RELEASE: At MWC Barcelona 2024, Huawei's green antenna series won the GSMA Global Mobile (GLOMO) 'Best Mobile Network Infrastructure' award. This is a ...

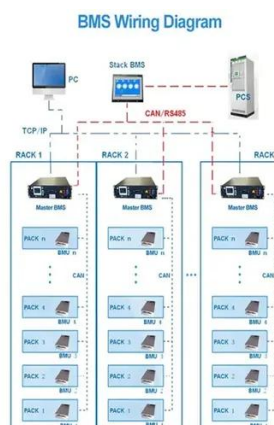


[Huawei BTS 3900 Hardware Structure . PDF](#)

The document describes the hardware structure and components of the Huawei BTS3900 base station system. The key points are: - The BTS3900 system consists of the BBU3900 baseband ...

[Huawei Green Antenna Series Wins GSMA.](#)

PRESS RELEASE: At MWC Barcelona 2024, Huawei's green antenna series won the GSMA Global Mobile (GLOMO) 'Best Mobile ...



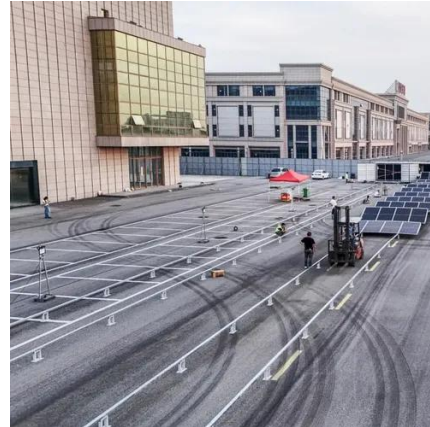
Base Station Antenna Catalogue

Huawei Agissson owns 17 open patents on core components and core technologies of base station antennas, such as radiation element and phasemitter. In addition, 8 patents on antennas are ...

Huawei Base Station: Types, Mechanical Properties, and How to ...



Discover Huawei base station types, mechanical properties, and best practices for optimal deployment. Explore specifications, performance insights, and real-world applications ...





Contact Us

For catalog requests, pricing, or partnerships, please visit:

<https://www.asimer.es>

Phone: +34 910 56 87 42

Email: info@asimer.es

Scan the QR code to access our WhatsApp.

