



Huawei Sunshine Inverter Power Factor





Overview

Learn more about the detailed model, parameter configuration, compatibility, environment, and product description of the SUN2000-3-4-5-6KTL-L1.

Learn more about the detailed model, parameter configuration, compatibility, environment, and product description of the SUN2000-3-4-5-6KTL-L1.

*1. The inverter max input PV power is 10,000 Wp when long strings are designed and fully connected with optimizers. Disclaimer: The preceding values are measured by an internal laboratory of Huawei in a specific environment. The actual values may vary with products, software versions, usage.

Market Leadership with Proven Technology: Huawei maintains its position as the world's #1 solar inverter manufacturer for six consecutive years, commanding 29% of the global market through superior AI-powered optimization, 99% peak efficiency, and extensive R&D investment representing 54.1% of.

SUN2000-3/4/5/6/8/10KTL-M0 will be compatible with HUAWEI smart string ESS in Q1, 2021 Recommended max. PV power 1 *1 Inverter max input PV power is 20,000 Wp when long strings are designed and fully connected with SUN2000-450W-P power optimizers. *2 The maximum input voltage is the upper limit of.

Note a: The maximum input voltage includes the PV input voltage. Note a: The rated output power is 5000 W for the AS4777 grid code. Note b: The maximum apparent power is 4600 VA for the VDE-AR-N 4105 grid code, and 5000 VA for the AS4777 grid code. Note c: The maximum apparent power is 5000 VA for.

When choosing a solar inverter Huawei for your residential or commercial photovoltaic system, prioritize efficiency, reliability, and smart grid integration. The best option often depends on your energy needs, roof layout, and future expansion plans. For most homeowners seeking high performance and.

Huawei photovoltaic inverter voltage regulation Does Huawei solar inverter reduce energy yi set this parameter to Power factor fix I power factor of the load is greater than 0.9. After a PV plant is connected, the self-sufficient PV plant feeds the remaining power into a power grid. The power.



Huawei Sunshine Inverter Power Factor



[SUN2000-3-4-5-6KTL-L1 Specs , HUAWEI Smart ...](#)

Learn more about the detailed model, parameter configuration, compatibility, environment, and product description of the SUN2000-3-4-5 ...

How to Choose the Best Huawei Solar Inverter for Your System

Learn what to look for in a Huawei solar inverter, from efficiency and compatibility to price and warranty. Make an informed decision with this complete buying guide.



How to Choose the Best Solar Inverter Huawei for Your Home ...

When choosing a solar inverter Huawei for your residential or commercial photovoltaic system, prioritize efficiency, reliability, and smart grid integration. The best option often ...



[Capability SUN2000 30-36-40-50KTL-M3 . PDF](#)

This document contains power (P) and reactive power (Q) capability curves for the Huawei SUN2000-30KTL-M3, SUN2000-36KTL-M3, SUN2000 ...



[Huawei Solar Inverter Complete Guide 2025: Models, ...](#)

Comprehensive Huawei solar inverter guide covering SUN2000 series, performance data, pricing, installation tips, and expert reviews. Updated 2025.



[Huawei photovoltaic inverter voltage regulation](#)

Autonomous droop control PV inverters have improved voltage regulation compared to the inverters without grid support functions, but more flexible control techniques will be required



[Using Huawei SUN2000 inverters with high /A ratios](#)

Provided that the system is designed with these constraints in mind, high DC/AC ratios will not cause any detrimental effects to the reliability, lifetime or warranty of Huawei SUN2000 inverters.



Inverter Technical Specifications



Note a: The rated output power is 5000 W for the AS4777 grid code. Note b: The maximum apparent power is 4600 VA for the VDE-AR-N 4105 grid code, and 5000 VA for the AS4777 ...



[Huawei SUN2000-3-10KTL-M1 Smart Hybrid Inverter Data ...](#)

*1 Inverter max input PV power is 20,000 Wp when long strings are designed and fully connected with SUN2000-450W-P power optimizers. *2 The maximum input voltage is the upper limit of ...

[Huawei Solar Inverter Complete Guide 2025: ...](#)

Comprehensive Huawei solar inverter guide covering SUN2000 series, performance data, pricing, installation tips, and expert ...



[FusionSolar Residential SUN2000-12-25KTL-M5 Datasheet](#)

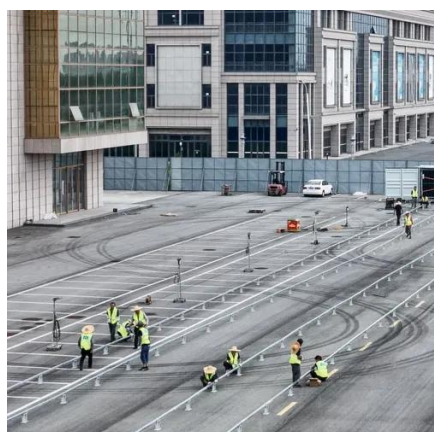
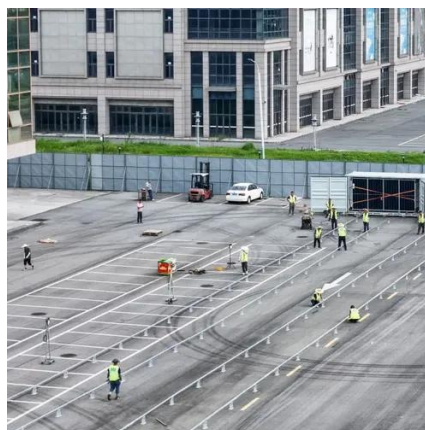
*1 Inverter max input PV power is 40,000 Wp when long strings are designed and fully connected with SUN2000-450W-P power optimizers. *2 The maximum input voltage is the ...



[Capability SUN2000 30-36-40-50KTL-M3 , PDF](#)



This document contains power (P) and reactive power (Q) capability curves for the Huawei SUN2000-30KTL-M3, SUN2000-36KTL-M3, SUN2000-40KTL-M3, and SUN2000-50KTL-M3 ...



[SUN2000-3-4-5-6KTL-L1 Specs , HUAWEI Smart PV Global](#)

Learn more about the detailed model, parameter configuration, compatibility, environment, and product description of the SUN2000-3-4-5-6KTL-L1.



Contact Us

For catalog requests, pricing, or partnerships, please visit:

<https://www.asimer.es>

Phone: +34 910 56 87 42

Email: info@asimer.es

Scan the QR code to access our WhatsApp.

