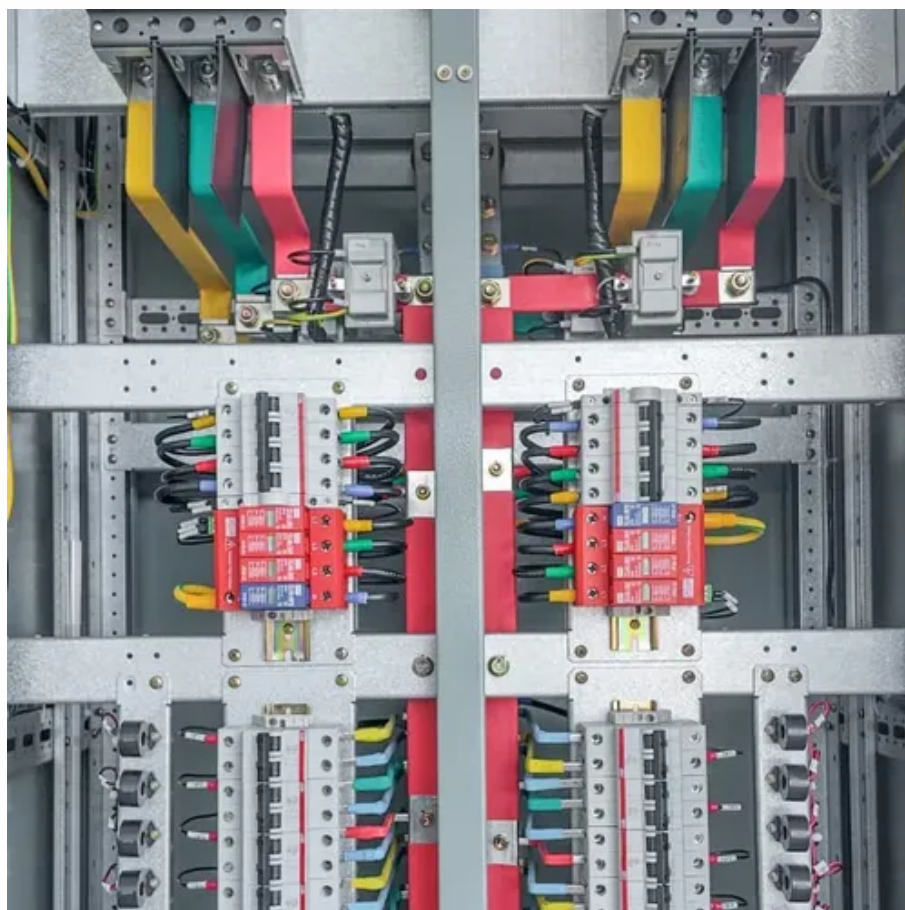




Huawei base station power supply DC small board





Huawei base station power supply DC small board



[Huawei Communication Base Station Power Supply Unit R4850n1](#)

The R4850N1 is a digital rectifier that converts the 85~300VAC to 53.5 VDC and possesses the characters of high efficiency, high power density, walk-in start, hot-plug, complete protection, ...

[Huawei Communication Base Station Power ...](#)

The R4850N1 is a digital rectifier that converts the 85~300VAC to 53.5 VDC and possesses the characters of high efficiency, high power density, walk ...



[DBS5900 Distributed Base Stations -- Huawei...](#)

The DBS5900 has the characteristics of small size, low power consumption, flexible installation, and rapid deployment. The DBS5900 has two ...

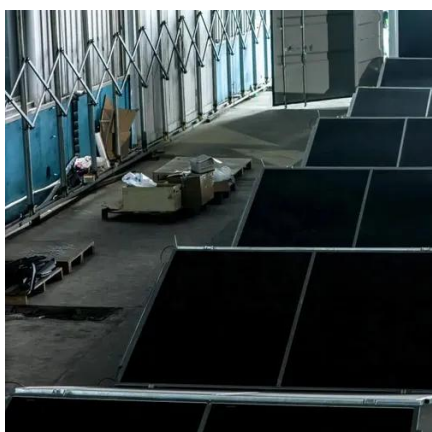
[Site Power Solutions & Facility , Huawei Digital Power](#)

Huawei power subracks support a wide range of AC input and DC output. They can be used independently or deployed in power systems. Standard dimensions and modular design ...



[Original Power Board Upeue 02311TVH DC Power BBU5900 ...](#)

Original Power Board UPEUe 02311TVH DC Power BBU5900 UPEU for HUAWEI Base Station. Reliable and efficient, ensuring stable power supply. Shop now for quality!, Alibaba .



[Huawei base station equipment disassembly- power supply part](#)

This is a Huawei GRFU 900C multi-carrier base station device, responsible for sending and receiving BBU data through the RF antenna. This is a GSM-era device, w



Huawei UPBA0 Board

The Huawei UPBA0 Board is a power supply and interface board designed for Huawei wireless base stations. It provides stable power distribution, signal interface management, and system ...



[DBS5900 Distributed Base Stations -- Huawei Enterprise](#)



The DBS5900 has the characteristics of small size, low power consumption, flexible installation, and rapid deployment. The DBS5900 has two frequency mode: FDD and TDD, supporting ...



[Huawei DCDCU-12B DC Power Distribution Unit for ...](#)

Huawei DCDCU-12B DC Power Distribution Unit offers 25A output, 48V input, and 48V output voltage. Ideal for BBU Base Station, RRU BTS, and ...

Huawei DCDCU-12B DC Power Distribution Unit for Base Stations

Huawei DCDCU-12B DC Power Distribution Unit offers 25A output, 48V input, and 48V output voltage. Ideal for BBU Base Station, RRU BTS, and more. 100% new., Alibaba .



[Site Power Solutions & Facility . Huawei Digital Power](#)

Huawei power subracks support a wide range of AC input and DC output. They can be used independently or deployed in power systems. Standard ...

[Huawei Embedded ETP48100-B1 Communication ...](#)



It is equipped with two R4850G rectifiers with a current of 50 A (100 A total). The output voltage is 48 V. The PSU has an AC input (220 V), it is not ...



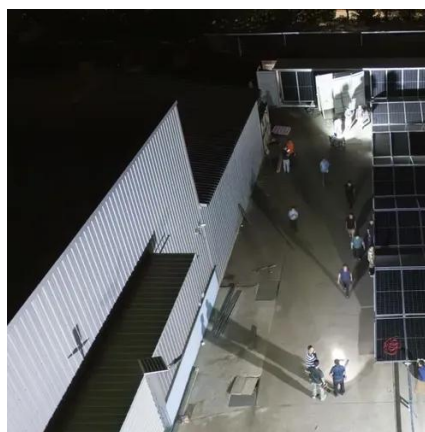
Huawei Embedded ETP48100-B1 Communication Base Station 48V 100A AC DC

It is equipped with two R4850G rectifiers with a current of 50 A (100 A total). The output voltage is 48 V. The PSU has an AC input (220 V), it is not equipped with a battery port. The device has ...



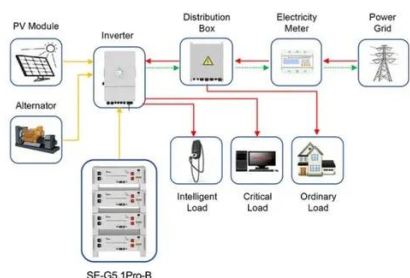
[Huawei DCDU-12B DC Distribution Unit Power System Price ...](#)

The DCDU-12B provides ten -48 V DC outputs using the same fuse configurations to meet the power distribution requirements of indoor and outdoor macro base stations, micro base ...



[MA5800 Huawei Brand New X7/X15/X17 DC Connect Power Board](#)

This high-reliability board enables stable DC power supply connection from external -48V sources to the MA5800 chassis, ensuring seamless performance and high availability for large-scale ...



Application scenarios of energy storage battery products



Contact Us

For catalog requests, pricing, or partnerships, please visit:

<https://www.asimer.es>

Phone: +34 910 56 87 42

Email: info@asimer.es

Scan the QR code to access our WhatsApp.

