



Industrial frequency inverter with grid-connected inverter





Overview

A grid-tie inverter converts (DC) into an (AC) suitable for injecting into an , at the same voltage and frequency of that power grid. Grid-tie inverters are used between local electrical power generators: , , , and the grid. To inject electrical power efficiently and safely into the grid, grid-tie inverters.

Hitachi's Narashino Works deploys inverter-based systems to stabilize industrial power. Traditional power grids have long relied on the mechanical inertia of large thermal power plants to maintain stable frequencies, typically 50 or 60 Hz.

Hitachi's Narashino Works deploys inverter-based systems to stabilize industrial power. Traditional power grids have long relied on the mechanical inertia of large thermal power plants to maintain stable frequencies, typically 50 or 60 Hz.

Tokyo, April 17, 2025 - Hitachi Industrial Equipment Systems Co., Ltd. (HIES) has begun operating a next-generation power conditioner*1 called a Grid Forming Inverter (GFM), at its Narashino Works facility in Chiba Prefecture. This cutting-edge system helps stabilize electric power systems as global.

Grid-forming inverters (GFMI) are recognized as critical enablers for the transition to power systems with high renewable energy penetration. Unlike grid-following inverters, which rely on phase-locked loops (PLLs) for synchronization and require a stable grid connection, GFMI internally.

There is a rapid increase in the amount of inverter-based resources (IBRs) on the grid from Solar PV, Wind, and Batteries. All of these technologies are Inverter-based Resources (IBRs). Source: Lin, Yashen, Joseph H. Eto, Brian B. Johnson, Jack D. Flicker, Robert H. Lasseter, Hugo N. Villegas Pico.

A grid-tie inverter converts direct current (DC) into an alternating current (AC) suitable for injecting into an electrical power grid, at the same voltage and frequency of that power grid. Grid-tie inverters are used between local electrical power generators: solar panel, wind turbine.

Grid-Following Inverters (GFLI) and Grid-Forming Inverters (GFMI) are two basic categories of grid-connected inverters. Essentially, a grid-following inverter works as a current source that synchronizes its output with the grid voltage and frequency and injects or absorbs active or reactive power.



Hitachi's Narashino Works deploys inverter-based systems to stabilize industrial power. Traditional power grids have long relied on the mechanical inertia of large thermal power plants to maintain stable frequencies, typically 50 or 60 Hz. These plants use heavy rotating turbines that resist sudden.



Industrial frequency inverter with grid-connected inverter



Grid-Following Inverter (GFLI)

This technical note introduces the working principle of a Grid-Following Inverter (GFLI) and presents an implementation example built ...

Grid-tie inverter

A grid-tie inverter converts direct current (DC) into an alternating current (AC) suitable for injecting into an electrical power grid, at the same voltage and frequency of that power grid.



Improving frequency stability in grid-forming inverters with ...

In low-inertia power grids, AMPC specifically offers improved frequency regulation, increased grid adaptability, and reduced computational burden, making it a more reliable and ...

A comprehensive review of grid-connected inverter topologies ...

This comprehensive review examines grid-connected inverter technologies from 2020 to 2025, revealing critical insights that fundamentally challenge industry assumptions ...

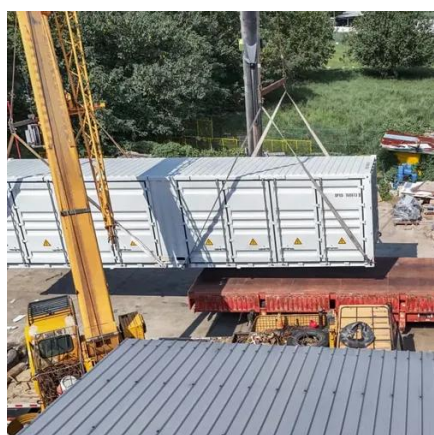


Grid-Following Inverter (GFLI)

This technical note introduces the working principle of a Grid-Following Inverter (GFLI) and presents an implementation example built with the TPI 8032 programmable inverter.

Grid-Forming Inverters: A Comparative Study of Different Control

Abstract: Grid-forming inverters (GFMI) are anticipated to play a leading role in future power systems.



[Introduction to Grid Forming Inverters](#)

Why do we need Grid-forming (GFM) Inverters in the Bulk Power System? There is a rapid increase in the amount of inverter-based resources (IBRs) on the grid from Solar PV, Wind, ...

[Hitachi Tests Grid-Forming Inverter for Grid Stability](#)



Hitachi's Narashino Works deploys inverter-based systems to stabilize industrial power. Traditional power grids have long relied on the ...

12.8V 200Ah



[Grid-Forming Inverters: A Comparative Study](#)

This approach ensures stable operation in both islanded and grid-connected modes, providing essential grid support functions such as ...

[Hitachi Industrial Equipment Systems Launches Next ...](#)

Narashino Works now runs on a system that combines solar energy, battery storage and inverter technology to reduce CO2 emissions and keep operations required in the emergency event- ...



Grid-tie inverter

Overview
Payment for injected power
Operation Types
Datasheets
External links

A grid-tie inverter converts direct current (DC) into an alternating current (AC) suitable for injecting into an electrical power grid, at the same voltage and frequency of that power grid. Grid-tie inverters are used between local electrical power generators: solar panel, wind turbine, hydro-electric, and the grid. To inject electrical power efficiently and safely into the grid, grid-tie inverters ...



[Hitachi Tests Grid-Forming Inverter for Grid Stability](#)

Hitachi's Narashino Works deploys inverter-based systems to stabilize industrial power. Traditional power grids have long relied on the mechanical inertia of large thermal ...



[Grid-Forming Inverters: A Comparative Study](#)

This approach ensures stable operation in both islanded and grid-connected modes, providing essential grid support functions such as frequency and voltage regulation. Its ...

Grid-forming

Grid-forming inverters address these challenges by simulating inertia and actively regulating voltage and frequency. This capability is vital for preventing blackouts, enabling the operation ...



1075KWHH ESS



Contact Us

For catalog requests, pricing, or partnerships, please visit:

<https://www.asimer.es>

Phone: +34 910 56 87 42

Email: info@asimer.es

Scan the QR code to access our WhatsApp.

