



Internal structure of super farad capacitor





Overview

In the early 1950s, engineers began experimenting with porous carbon electrodes in the design of capacitors, from the design of and . is an that is an extremely porous "spongy" form of carbon with a high . In 1957 H. Becker developed a "Low voltage electrolytic capacitor with porous c.

As shown below the capacitor is made up of a series of RC circuits where R_1, R_2, \dots, R_n are the internal resistances and C_1, C_2, \dots, C_n are the electrostatic capacitances of the activated carbons. When voltage is applied current flows through each of the RC circuits.

As shown below the capacitor is made up of a series of RC circuits where R_1, R_2, \dots, R_n are the internal resistances and C_1, C_2, \dots, C_n are the electrostatic capacitances of the activated carbons. When voltage is applied current flows through each of the RC circuits.

Supercapacitors utilize a phenomenon in which electric charges are oriented at the extremely thin boundary between the electrolyte and the electrodes (electric double-layer) to physically store electric charge. In conventional capacitors, like aluminum electrolytic capacitors, a dielectric.

A supercapacitor (SC), also called an ultracapacitor, is a high-capacity capacitor, with a capacitance value much higher than solid-state capacitors but with lower voltage limits. It bridges the gap between electrolytic capacitors and rechargeable batteries. It typically stores 10 to 100 times more.

Supercapacitors also known ultracapacitors and electric double layer capacitors (EDLC) are capacitors with capacitance values greater than any other capacitor type available today. Supercapacitors are breakthrough energy storage and delivery devices that offer millions of times more capacitance.

Supercapacitors (or ultracapacitors) are the fastest growing capacitor technology on the market offering very high DC capacitance and high energy densities. Sometimes all supercapacitors are mis-called as EDLC (Electric Double Layer Capacitors), but as we will explain shortly, EDLC is large, but.

Super-capacitors are constructed from two electrodes, an electrolyte and a electrolyte separator that allows the transfer of ions, while providing insulation between the electrodes. Fig 2: Internals of a supercapacitor when it is charged.



Electrodes: Super-capacitors consist of a pair of.

These electrochemical type capacitors are small in size and can offer capacitance in tens, hundreds, or even thousands of Farad. They cannot only store a large amount of charge, but they can also go through several thousands of charge-discharge cycles without any wear or tear. That is why these.



Internal structure of super farad capacitor



Internal

Define internal. internal synonyms, internal pronunciation, internal translation, English dictionary definition of internal. adj. 1. Of, relating to, or located within the limits or surface; inner.

[Supercapacitors - Basic Function & Construction](#)

Supercapacitor construction is explained on EDLC symmetrical structure, nevertheless the basic design concept is also valid for pseudocapacitors that target boosting electrochemical storage ...



INTERNAL definition and meaning , Collins English Dictionary

Internal is used to describe things that exist or happen inside a country or organization. The country stepped up internal security. We now have a Europe without internal borders.



[Supercapacitors Structure and How it Works](#)

Figure 3 shows the basic structure (capacitor base cell) of a supercapacitor. The electrical double layer phenomenon appears on the ...



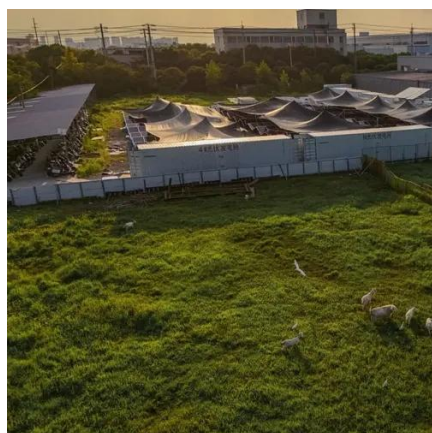
[Structure of Supercapacitors , Nippon Chemi-Con Corporation](#)

Supercapacitors utilize a phenomenon in which electric charges are oriented at the extremely thin boundary between the electrolyte and the electrodes (electric double-layer) to physically store ...



[Internal structure of super capacitor \[23\]](#)

Energy storage systems are essential to avoid the intermittent production of photovoltaic energy and to cover peaks in energy demand. The super ...



Supercapacitor

Supercapacitor

Super-capacitors are constructed from two electrodes, an electrolyte and a electrolyte separator that allows the transfer of ions, while providing insulation between the electrodes.



OverviewHistoryBackgroundDesignStylesTypesMaterialsElectrical parameters

In the early 1950s, General Electric engineers began experimenting with porous carbon electrodes in the design of capacitors, from the design of fuel cells and rechargeable batteries. Activated charcoal is an electrical conductor that is an extremely porous "spongy" form of carbon with a high specific surface area. In 1957 H. Becker developed a "Low voltage electrolytic capacitor with porous c...



[Internal structure of super capacitor \[23\]](#)

Energy storage systems are essential to avoid the intermittent production of photovoltaic energy and to cover peaks in energy demand. The super capacitor, also known as electrochemical ...

[BU-209: How does a Supercapacitor Work?](#)

The supercapacitor, also known as ultracapacitor or double-layer capacitor, differs from a regular capacitor in that it has very high capacitance. A ...



[Supercapacitors Structure and How it Works](#)

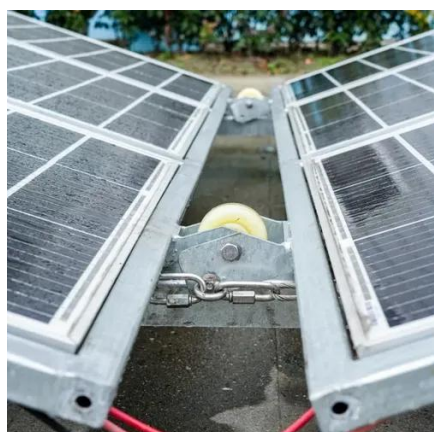
Figure 3 shows the basic structure (capacitor base cell) of a supercapacitor. The electrical double layer phenomenon appears on the boundary surface between activated ...





internal adjective

Definition of internal adjective in Oxford Advanced Learner's Dictionary. Meaning, pronunciation, picture, example sentences, grammar, usage notes, synonyms and more.

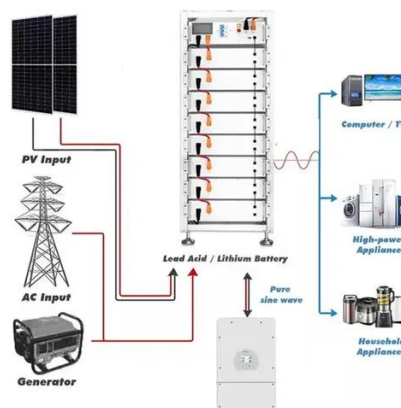


[Internal Definition & Meaning , Britannica Dictionary](#)

INTERNAL meaning: 1 : existing or located on the inside of something; 2 : coming from inside

[Supercapacitors - Basic Electronics 16](#)

The electrodes of these capacitors are made up of porous activated carbon or carbon nanotubes, which are capable of attracting a vast amount of charge in them. A minimal ...



Supercapacitor Guide: Working Principle, Types, Structure, ...

What is a Supercapacitor? A supercapacitor, also called an ultracapacitor or electrochemical capacitor, is an energy-storage device that provides very high capacitance compared to ...

internal



of or relating to the inside or inner part: the internal organs of the body. Government of or relating to the domestic affairs of a country:[before a noun] a bureau of internal affairs.



internal

internal (comparative more internal, superlative most internal) Of or situated on the inside. We saw the internal compartments of the machine. (medicine) Within the body.

[INTERNAL Definition & Meaning , Dictionary](#)

INTERNAL definition: situated or existing in the interior of something; interior. See examples of internal used in a sentence.



internal, adj. & n. meanings, etymology and more , Oxford English

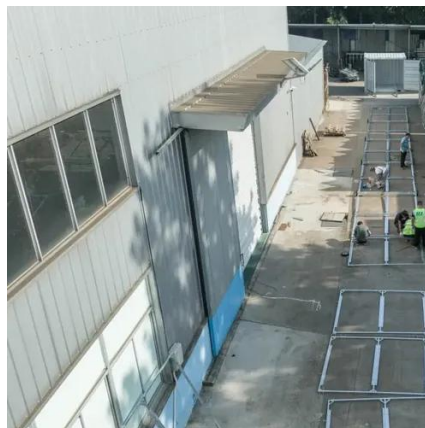
There are 15 meanings listed in OED's entry for the word internal, three of which are labelled obsolete. See 'Meaning & use' for definitions, usage, and quotation evidence.

[Structure of Supercapacitors , Nippon Chemi-Con](#)

...



Supercapacitors utilize a phenomenon in which electric charges are oriented at the extremely thin boundary between the electrolyte and the electrodes ...



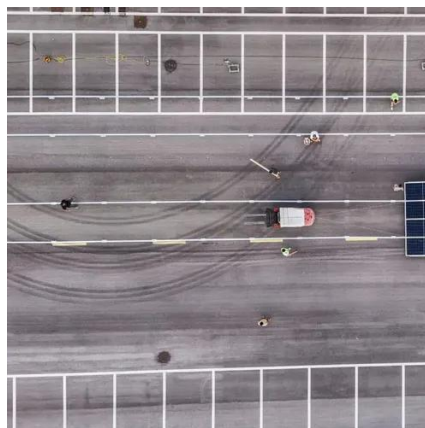
[Supercapacitors - Basic Electronics 16](#)

The electrodes of these capacitors are made up of porous activated carbon or carbon nanotubes, which are capable of attracting a ...



Supercapacitor Technical Guide

Supercapacitors are based on a carbon technology. The carbon technology used in these capacitors creates a very large surface area with an extremely small separation distance.



Supercapacitor

This design gave a capacitor with a capacitance on the order of one farad, significantly higher than electrolytic capacitors of the same dimensions. This basic mechanical design remains the ...



[BU-209: How does a Supercapacitor Work?](#)

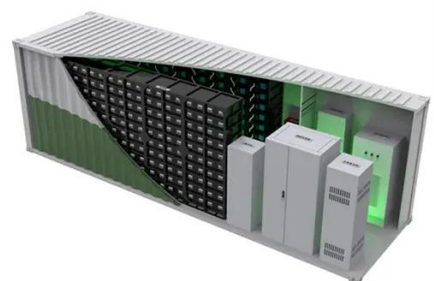


The supercapacitor, also known as ultracapacitor or double-layer capacitor, differs from a regular capacitor in that it has very high capacitance. A capacitor stores energy by means of a static ...



Supercapacitor

Super-capacitors are constructed from two electrodes, an electrolyte and a electrolyte separator that allows the transfer of ions, while providing ...



INTERNAL , English meaning

INTERNAL definition: 1. inside the body: 2. inside a person's mind: 3. inside an object or building: .
[Learn more.](#)



INTERNAL Definition & Meaning

The meaning of INTERNAL is existing or situated within the limits or surface of something. How to use internal in a sentence.



Contact Us

For catalog requests, pricing, or partnerships, please visit:

<https://www.asimer.es>

Phone: +34 910 56 87 42

Email: info@asimer.es

Scan the QR code to access our WhatsApp.

