



Inverter DC overvoltage





Overview

Inverter overvoltage refers to the DC bus voltage exceeding a safe threshold, risking component damage and triggering protective shutdown. Under normal operation, the DC bus voltage is the rectified and filtered average of the three-phase AC input.

Inverter overvoltage refers to the DC bus voltage exceeding a safe threshold, risking component damage and triggering protective shutdown. Under normal operation, the DC bus voltage is the rectified and filtered average of the three-phase AC input.

Overvoltage Fault Analysis in Inverter Voltage Detection The inverter is the core of modern electric drive systems, enabling precise motor speed control. To ensure safe and stable operation, it continuously monitors key parameters—voltage, current, temperature, and frequency. This article analyzes.

Explore whether cold weather can lead to a DC Overvoltage error in solar systems.
•What are the signs of a DC Overvoltage error?

Signs of a DC Overvoltage error include system shutdowns and error messages on the inverter display. •How can I prevent DC Overvoltage errors?

Preventing DC Overvoltage.

This is caused by a high intermediate circuit DC voltage. This can arise from high inertia loads decelerating too quickly, the motor turns into a generator and increases the inverter's DC voltage. There are other causes of DC overvoltage, however. POSSIBLE FIXES: Turn the overvoltage controller is.

This guide explains how to troubleshoot a "OV-BUS" error on an Autarco inverter. This error indicates that the voltage in the inverter's DC bus, which connects to the solar panels, has exceeded the safe operating limit. High DC voltage can damage the inverter's internal components, leading to.

Why is the DC bus voltage on my inverter higher than expected?

A DC bus voltage higher than expected on an inverter typically indicates one or



more of the following technical issues: If the load is decelerating or being driven by external forces (e.g., a motor acting as a generator), energy is fed.

Inverter overvoltage errors occur when the DC input voltage from your solar panels exceeds the inverter's maximum voltage rating. While your system may still operate temporarily, this can damage the inverter or cause it to shut down as a protective measure. Common Causes Too many panels in series -.



Inverter DC overvoltage



[The 3 Most Common Faults on Inverters and how to Fix Them](#)

In this article we look at the 3 most common faults on inverters and how to fix them: 1. Overvoltage and Undervoltage. This is caused by a high intermediate circuit DC voltage. This ...

[Troubleshooting OV Error in Inverters: Causes and Solutions](#)

Understand overvoltage (OV) faults on Parker AC10, AC20, AC30, and AC690 drives. Learn common causes and practical solutions to protect your inverter system and ensure smooth ...



What causes inverter overvoltage errors? - Solar Power Store ...

Inverter overvoltage errors occur when the DC input voltage from your solar panels exceeds the inverter's maximum voltage rating. While your system may still operate ...

[The 3 Most Common Faults on Inverters and how to Fix Them](#)

Overvoltage and Undervoltage Earth Fault Overcurrent The 3 Most Common Faults on Inverters and How to Fix Them Overvoltage This is caused by a high intermediate circuit DC voltage. This can arise from high inertia loads decelerating too quickly, the motor turns into a generator and



increases the inverter's DC voltage. There are other causes of DC overvoltage, however. POSSIBLE FIXES: 1. Turn the overvoltage controller is on...See more on inverterdrivesystems autarco

OV-BUS: DC bus overvoltage - help tarco

This guide explains how to troubleshoot a "DC Bus Over Voltage" error on an Autarco inverter. This error indicates that the voltage in the inverter's DC bus, which connects to the solar ...



[Understanding High DC Bus Voltage in Inverters](#)

Learn why your inverter's DC bus voltage may be higher than expected and how to diagnose the issue effectively.

My Document

The SolarEdge inverters and power optimizers conform to the IEC62109 safety standard. According to this standard, equipment permanently connected to AC must withstand ...



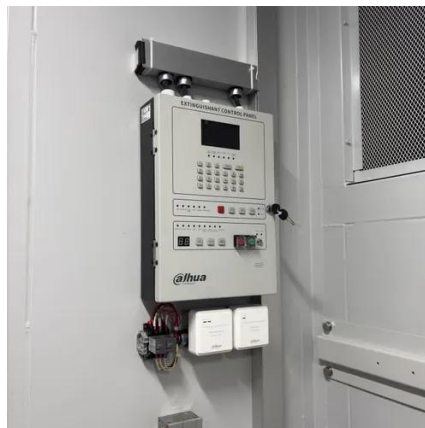
OV-BUS: DC bus overvoltage

This guide explains how to troubleshoot a "DC Bus Over Voltage" error on an Autarco inverter. This error indicates that the voltage in the inverter's DC bus, which connects to the solar ...



[Inverter Overvoltage: Causes & Solutions Explained](#)

Understand inverter DC bus overvoltage causes--high input voltage or regenerative energy. Learn protection methods like braking resistors and stall prevention.



[Managing VFD Overvoltage Faults During Deceleration ...](#)

During deceleration of a high-inertia load, the motor (right) can generate power back into the DC link. A brake chopper transistor (DB+ to DB-) diverts excess energy into the braking resistor ...

DC Overvoltage Error - Troubleshooting & Technical Fix Guide

The DC Overvoltage error occurs when the voltage from the solar array exceeds the inverter's maximum input limit. This can happen due to various factors, including temperature effects ...



DC Bus Overvoltage White Paper

Numerous built-in protections and fault indications are provided with modern VFDs, including the commonly seen DC Bus Overvoltage Fault. This fault has several possible causes and this ...



Contact Us

For catalog requests, pricing, or partnerships, please visit:

<https://www.asimer.es>

Phone: +34 910 56 87 42

Email: info@asimer.es

Scan the QR code to access our WhatsApp.

