



# Inverter automatically cuts off power when low voltage occurs





## Inverter automatically cuts off power when low voltage occurs

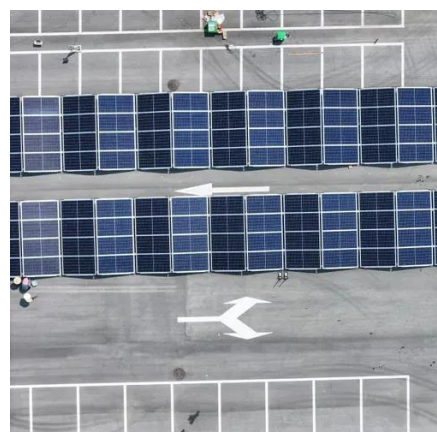


### Power Inverter Problems: 5 Most Frequent Issues and How to Solve

Over 60% of inverter failures stem from preventable problems such as loose connections, overloaded circuits, or poor maintenance. This guide takes an in-depth look at ...

### WHY DOES MY INVERTER KEEP CUTTING OUT?

The power drawn by your devices might exceed the power output capacity of the inverter. Additionally, all inverters can only withstand up to a certain wattage of input.



### Why Your Residential Inverter Keeps Tripping and How to Fix It?

Is your home inverter constantly tripping? Learn the common reasons why this happens--like overload, battery faults, or wiring issues--and get easy, step-by-step fixes.

### Low volt shut down

Hi there, i have a quattro inverter that randomly shuts down with a low voltage indication, it happens even when batteries are fully charged, everything seems to be ...



### **Low volt shut down**

Hi there, i have a quattro inverter that randomly shuts down with a low voltage indication, it happens even when batteries are fully ...

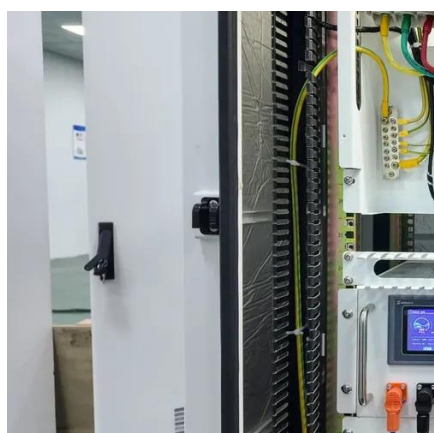
### [5 Reasons Your Inverter Keeps Shutting Off](#)

There are many reasons why the voltage level would spike. Most likely it is already above 240 volts or the inverter phase is set to the limit already. ...



### [Inverter Shutting Down: Causes, Fixes & Prevention Tips](#)

If voltage becomes too high, too low, or fluctuates too rapidly, the system disconnects automatically. This type of inverter shutting down often follows a pattern.



### **Inverter On/Off Problem: Complete Troubleshooting Guide With ...**



This comprehensive guide explores the seven most common reasons why inverter on/off problem occurs with detailed troubleshooting procedures and effective solutions for each ...



### [5 Reasons Your Inverter Keeps Shutting Off](#)

There are many reasons why the voltage level would spike. Most likely it is already above 240 volts or the inverter phase is set to the limit already. The operating manual includes ...



### **Why is my inverter shutting off due to "battery low voltage"?**

In a hybrid inverter, you may get warning about "battery low voltage" or "battery over-discharge", and in a standard system your charge controller and inverter may show a ...



### [WHY DOES MY INVERTER KEEP CUTTING ...](#)

The power drawn by your devices might exceed the power output capacity of the inverter. Additionally, all inverters can only ...



### [Inverter Keeps Shutting Off? Here's How to ...](#)



We are ready to show you how to put your inverter into program mode and show you exactly what to do to set the low voltage cutoff settings. You'll ...



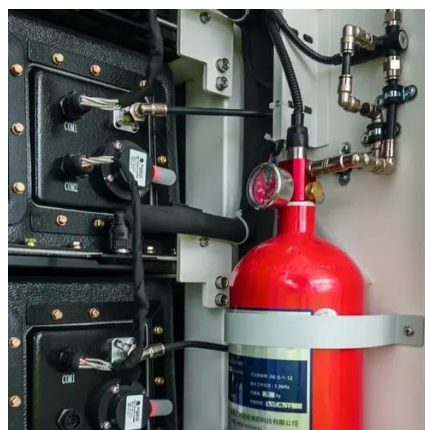
### **Inverter Keeps Shutting Off? Here's How to Change the Low Voltage Cut Off**

We are ready to show you how to put your inverter into program mode and show you exactly what to do to set the low voltage cutoff settings. You'll know the proper voltage setting range that a ...

### [Power Inverter Problems: 5 Most Frequent Issues](#)

...

Over 60% of inverter failures stem from preventable problems such as loose connections, overloaded circuits, or poor maintenance. ...



### **RV Inverter Auto Shut Down: What Happens When Battery Is Low?**

This feature automatically shuts down the inverter when the battery voltage falls below a certain point. If the battery cannot maintain the required rated current, rated voltage, ...



## Contact Us

---

For catalog requests, pricing, or partnerships, please visit:

<https://www.asimer.es>

Phone: +34 910 56 87 42

Email: [info@asimer.es](mailto:info@asimer.es)

Scan the QR code to access our WhatsApp.

