



# Inverter outputs in different power ranges





## Overview

---

A power inverter, inverter, or invertor is a device or circuitry that changes (DC) to (AC). The resulting AC frequency obtained depends on the particular device employed. Inverters do the opposite of which were originally large electromechanical devices converting AC to DC.

There are four different categories under this classification. Central inverters, which are usually around several kW to 100 MW range. String inverters, typically rated around a few hundred Watts to a few kW. Multi-string inverters, typically rated around 1 kW to 10 kW.

There are four different categories under this classification. Central inverters, which are usually around several kW to 100 MW range. String inverters, typically rated around a few hundred Watts to a few kW. Multi-string inverters, typically rated around 1 kW to 10 kW.

Inverters can be classed according to their power output. The following information is not set in stone, but it gives you an idea of the classifications and general power ranges associated with them. These ranges may vary from one manufacturer to another. Inverters may also be found with output.

Since inverters convert DC power to AC power the output of the inverter is measured in either power (kW AC) or current (amps) and voltage (typically 240v AC). For example, the Tesla string inverter has a power output of 7.6 kW AC or 31.6 amps at 240v AC. An Enphase IQ-8+ microinverter has a power.

Power inverters are primarily used in electrical power applications where high currents and voltages are present; circuits that perform the same function for electronic signals, which usually have very low currents and voltages, are called oscillators. A typical power inverter device or circuit.

There are many factors that go into selecting the best inverter (and options) for your application, especially when you get into the higher power ranges (800 watts or more). This page should give you the information you need to get your selection down to what will work best for you. We offer both.

There are four different categories under this classification. Central inverters, which are usually around several kW to 100 MW range. String inverters, typically rated around a few hundred Watts to a few kW. Multi-string inverters, typically



rated around 1 kW to 10 kW range. Let's start with the.

Inverters change the direct current from fuel cells, solar energy, and batteries to AC power. Further, they assist in speed and torque control in electronic motors. You'll come across the following top five ranges of inverters in power electronics: They feature a relatively high rating. Thus, they.



## Inverter outputs in different power ranges

---

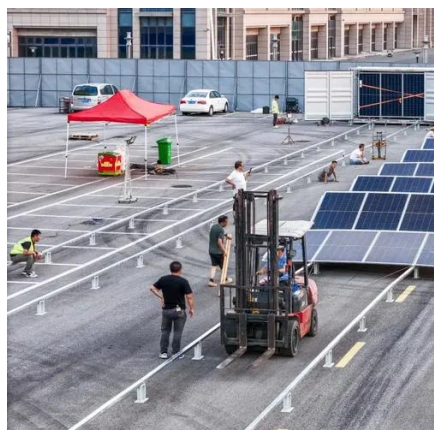


### [Inverter Basics and Selecting the Right Model](#)

There are many factors that go into selecting the best inverter (and options) for your application, especially when you get into the higher power ranges ...

### [Everything You Need to Know About Inverter ...](#)

In this article, we'll go into the basics of what an inverter is, the types of inverters, inverter power outputs, and how the DC-to-AC size ...

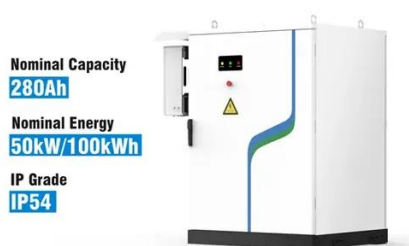


### [Inverter Specifications and Data Sheet](#)

Inverters can be classed according to their power output. The following information is not set in stone, but it gives you an idea of the classifications and general power ranges associated with ...

### [Inverter Types , AC DC Power Converters , Circuits](#)

Companies and households that require a constant power supply need inverters. We'll cover the different types of inverters and their wide range of applications.



### [How To Read And Interpret An Inverter Specification](#)

Whether setting up a solar power system, ensuring reliable power for your home, or optimizing an electric vehicle (EV) setup, knowing the technical ...

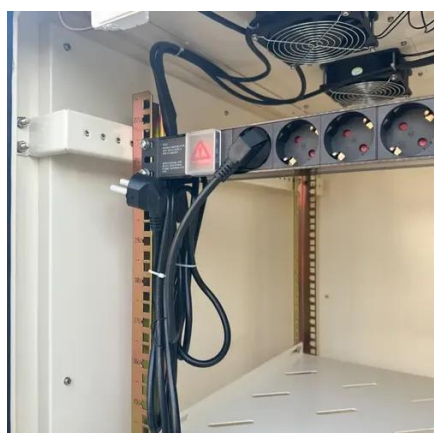
### **Inverter Sizing and Efficiency**

Actual operating power varies with irradiance, temperature, and system design. PV output swings by time of day, season, and module ...



### [How To Read And Interpret An Inverter Specification](#)

Whether setting up a solar power system, ensuring reliable power for your home, or optimizing an electric vehicle (EV) setup, knowing the technical details helps you make an informed ...



### **Inverter Sizing and Efficiency**



Actual operating power varies with irradiance, temperature, and system design. PV output swings by time of day, season, and module temperature. Inverter output is capped by ...



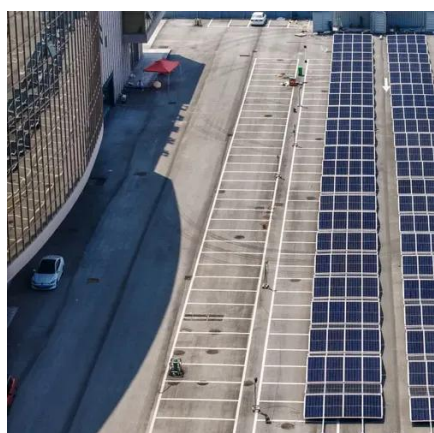
## Power inverter

A power inverter, inverter, or invertor is a power electronic device or circuitry that changes direct current (DC) to alternating current (AC). [1] The resulting AC frequency obtained depends on ...



## [Inverter Types , AC DC Power Converters](#)

Companies and households that require a constant power supply need inverters. We'll cover the different types of inverters and their ...



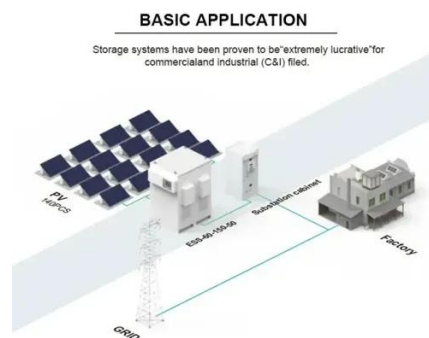
## [Inverter types and classification , AE 868: ...](#)

Now that we understand why we need an inverter for PV systems, it is time to introduce the different types of inverters that exist in the market and ...

## [Comprehensive Guide to Inverters: Types, ...](#)



Discover everything you need to know about inverters, from understanding the difference between pure sine wave and modified sine ...



### [Comprehensive Guide to Inverters: Types, Parameters and ...](#)

Discover everything you need to know about inverters, from understanding the difference between pure sine wave and modified sine wave to choosing the right inverter type ...

### [Inverter Basics and Selecting the Right Model](#)

There are many factors that go into selecting the best inverter (and options) for your application, especially when you get into the higher power ranges (800 watts or more). This page should ...



### **Inverter types and classification , AE 868: Commercial Solar ...**

Now that we understand why we need an inverter for PV systems, it is time to introduce the different types of inverters that exist in the market and discover the advantages and ...



### **Power inverter**



Overview  
Input and output  
Batteries  
Applications  
Circuit description  
Size  
History  
See also

A power inverter, inverter, or invertor is a power electronic device or circuitry that changes direct current (DC) to alternating current (AC). The resulting AC frequency obtained depends on the particular device employed. Inverters do the opposite of rectifiers which were originally large electromechanical devices converting AC to DC.



### [Everything You Need to Know About Inverter Sizing](#)

In this article, we'll go into the basics of what an inverter is, the types of inverters, inverter power outputs, and how the DC-to-AC size ratio is vital in making a solar system run ...



### **CSM\_Inverter\_TG\_E\_1\_1**

With this method, the inverter monitors the output voltage, the output current, and the encoder feedback from the motor. The encoder feedback is used to adjust the output waveform to ...





## Contact Us

---

For catalog requests, pricing, or partnerships, please visit:

<https://www.asimer.es>

Phone: +34 910 56 87 42

Email: [info@asimer.es](mailto:info@asimer.es)

Scan the QR code to access our WhatsApp.

