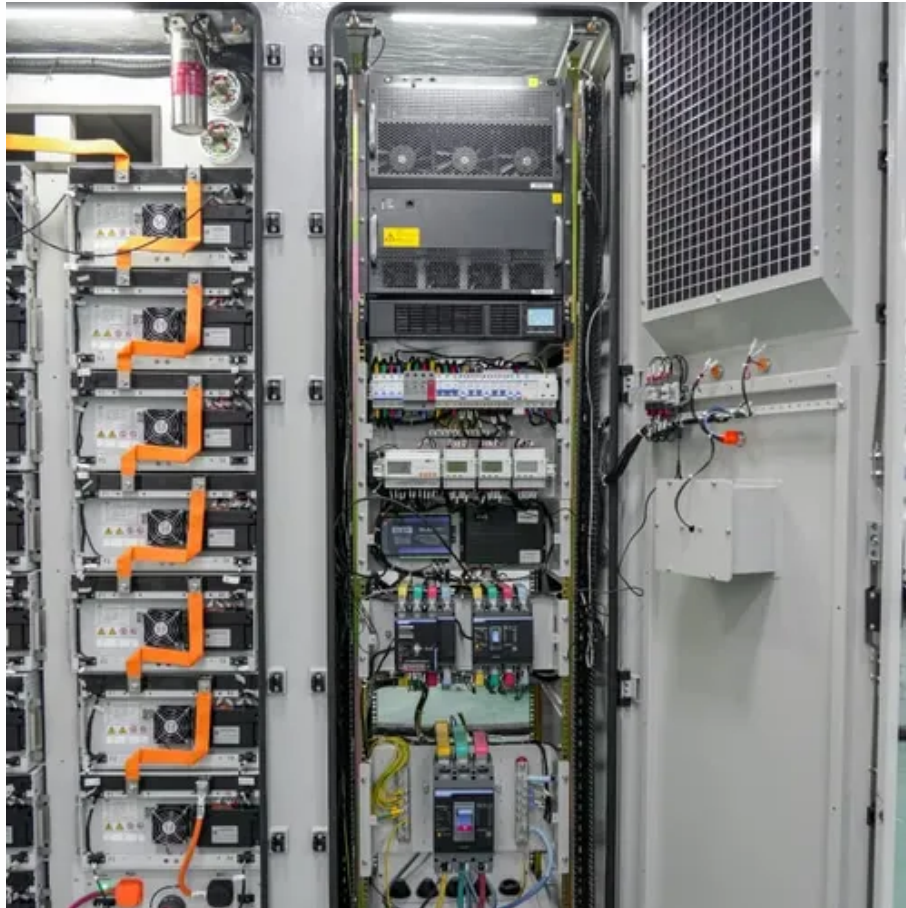




Is Dodoma base station communication easy to do





Overview

The base station subsystem (BSS) is the section of a traditional cellular telephone network which is responsible for handling traffic and signaling between a mobile phone and the network switching subsystem. The BSS carries out transcoding of speech channels, allocation of radio channels to mobile phones, and reception over the air and many other functions.

Dodoma, Tanzania's capital city, has steadily improving connectivity infrastructure, though it still lags behind commercial hub Dar es Salaam. The city offers decent 3G/4G coverage in central areas, with major carriers like Vodacom, Airtel, and Tigo providing reliable service.

Dodoma, Tanzania's capital city, has steadily improving connectivity infrastructure, though it still lags behind commercial hub Dar es Salaam. The city offers decent 3G/4G coverage in central areas, with major carriers like Vodacom, Airtel, and Tigo providing reliable service.

Dodoma, Tanzania's capital city, has steadily improving connectivity infrastructure, though it still lags behind commercial hub Dar es Salaam. The city offers decent 3G/4G coverage in central areas, with major carriers like Vodacom, Airtel, and Tigo providing reliable service. Internet speeds are.

The base station subsystem (BSS) is the section of a traditional cellular telephone network which is responsible for handling traffic and signaling between a mobile phone and the network switching subsystem. The BSS carries out transcoding of speech channels, allocation of radio channels to mobile.

DODOMA: TANZANIA'S ambitious Digital Tanzania Project, which aims to establish 758 communication towers across the country, has made remarkable progress, with 57 per cent of the construction works completed. Launched by President Samia Suluhu Hassan in May 2023, the project is designed to improve.

A base station is a fixed point of communication between mobile devices and the wider telecom network. It transmits and receives radio signals, enabling your phone to access voice, data, and internet services. Together, thousands of base stations form a seamless web of coverage known as a cellular.

A base station is an integral component of wireless communication networks, serving as a central point that manages the transmission and reception of signals between cellular networks and mobile devices. It ensures that users can access



voice and data services effectively. Now that we have a solid.

A base station is a fixed communication infrastructure that connects mobile devices (such as smartphones, tablets, or IoT devices) to a network, enabling wireless communication. It acts as the intermediary between the mobile device and the broader telecommunications network, facilitating both data. What is a base station and how does it work?

A base station is a fixed point of communication between mobile devices and the wider telecom network. It transmits and receives radio signals, enabling your phone to access voice, data, and internet services. Together, thousands of base stations form a seamless web of coverage known as a cellular network. How Does It Work?

What is a base station in a mobile network?

Often hidden in plain sight on rooftops or towers, base stations are the backbone of modern mobile networks. What Is a Base Station?

A base station is a fixed point of communication between mobile devices and the wider telecom network. It transmits and receives radio signals, enabling your phone to access voice, data, and internet services.

Why are base stations important?

In today's digital age, reliable and high-speed communication is more essential than ever. Whether it's for mobile phones, internet services, or IoT (Internet of Things) devices, base stations play a critical role in providing the necessary infrastructure to ensure smooth and uninterrupted connectivity.

How does a base station manage a mobile device?

Handover Management: When a mobile device moves from one cell to another during a call or data session, the base station manages the handover process. It ensures a seamless transition by transferring the connection from one cell to another without interrupting the ongoing communication.



Is Dodoma base station communication easy to do



What Is the Role of a Base Station in Wireless Communication?

Base stations are critical components in wireless communication networks, serving as the intermediary between mobile devices and the core network. They play a vital role in ...

[Remarkable strides in communication towers project](#)

DODOMA: TANZANIA'S ambitious Digital Tanzania Project, which aims to establish 758 communication towers across the country, ...



WORKING PRINCIPLE



[Remarkable strides in communication towers project](#)

DODOMA: TANZANIA'S ambitious Digital Tanzania Project, which aims to establish 758 communication towers across the country, has made remarkable progress, with ...

Base station subsystem

The base station subsystem (BSS) is the section of a traditional cellular telephone network which is responsible for handling traffic and signaling between a mobile phone and the network ...



Understanding Base Stations: The Backbone of Wireless Communication

A base station is a fixed communication infrastructure that connects mobile devices (such as smartphones, tablets, or IoT devices) to a network, enabling wireless communication.

[Understanding Base Stations: The Backbone of Wireless ...](#)

A base station is a fixed communication infrastructure that connects mobile devices (such as smartphones, tablets, or IoT devices) to a network, enabling wireless communication.



Base station subsystem

EMF

Each base station has a number of radio channels, or frequencies, to communicate with mobile phones. Because this number of frequencies is limited, frequencies are often reused in ...



Overview
Base transceiver station
Base station controller
Packet control unit
BSS interfaces
See also

The base station subsystem (BSS) is the section of a traditional cellular telephone network which is responsible for handling traffic and signaling between a mobile phone and the network switching subsystem. The BSS carries out transcoding of speech channels, allocation of radio channels to mobile phones, paging, transmission and reception over the air interface and many othe...



Investigation Of Public Exposure To Radiated Emf From Cellular Base

The results clearly demonstrate that the RF EME emissions from cellular base stations are several orders of magnitude below the maximum permitted limit contrary to the ...

What Is Base Station In Wireless Communication?

In wireless communication, a base station is a critical component that enables wireless communication between devices. It serves as a central point of connection for ...



Investigation Of Public Exposure To Radiated Emf From Cellular ...

The results clearly demonstrate that the RF EME emissions from cellular base stations are several orders of magnitude below the maximum permitted limit contrary to the ...





[Stay Connected in Dodoma . Connectivity Guide](#)

eSIM offers significant advantages for Dodoma travelers, primarily convenience and immediate connectivity upon arrival. You can purchase and activate plans before departure through ...



EMF

Each base station has a number of radio channels, or frequencies, to communicate with mobile phones. Because this number of frequencies is ...

What Is A Base Station?

Base stations play a central role in two-way radio systems, such as citizens band (CB) radio and ham radio. In these setups, the base station serves as a fixed point of ...



[What Does a Base Station Do and Why Is It Essential for ...](#)

A base station is a fixed point of communication between mobile devices and the wider telecom network. It transmits and receives radio signals, enabling your phone to access ...



Contact Us

For catalog requests, pricing, or partnerships, please visit:

<https://www.asimer.es>

Phone: +34 910 56 87 42

Email: info@asimer.es

Scan the QR code to access our WhatsApp.

