



Is the base station lead-acid battery a water battery





Overview

A lead acid battery is a wet cell battery. It contains a liquid electrolyte. These batteries can be serviceable, featuring vented and removable caps for regular checks, or they can be maintenance-free. Wet cell batteries represent one of the oldest battery technologies still in use.

A lead acid battery is a wet cell battery. It contains a liquid electrolyte. These batteries can be serviceable, featuring vented and removable caps for regular checks, or they can be maintenance-free. Wet cell batteries represent one of the oldest battery technologies still in use.

We do a deep dive into the science of why batteries only lose water, explain the catastrophic results of adding acid to an in-service battery, and provide a step-by-step playbook for safely checking and filling your batteries to maximize their lifespan. This is a must-read for ensuring the safety.

A lead acid battery is a wet cell battery. It contains a liquid electrolyte. These batteries can be serviceable, featuring vented and removable caps for regular checks, or they can be maintenance-free. Wet cell batteries represent one of the oldest battery technologies still in use today. On the.

Lead-acid batteries function as a dependable source of power for everything from automobiles to large-scale deep-cycle applications. The answer to whether these batteries need water is not a simple yes or no, but rather depends entirely on the battery's specific construction. The electrolyte in a.

When it comes to the 'juice' that powers your car batteries, or lead-acid batteries to be specific, electrolytes play an unignorable role. These electrolytes are often a mixture of sulfuric acid and distilled water. You might think, "Ah, just water and acid. I mean, how complex could it be?

" But.

Lead acid batteries are rechargeable batteries using lead plates and sulfuric acid electrolyte to store energy. Commonly used in forklifts, golf carts, UPS systems, and vehicles, they provide reliable high-current output. Redway Power manufactures industrial-grade lead acid batteries with strict.



The lead-acid battery is a type of rechargeable battery. First invented in 1859 by French physicist Gaston Planté, it was the first type of rechargeable battery ever created. Compared to the more modern rechargeable batteries, lead-acid batteries have relatively low energy density and heavier.



Is the base station lead-acid battery a water battery



[Battery Acid vs. Battery Water: A Complete Guide for Plant](#)

The confusion between Battery Acid (electrolyte) and Battery Water (deionized water) is common--but getting it right is the difference between a reliable fleet and a line of ...

[Battery Acid vs Distilled Water: What You Need to Know](#)

In lead acid batteries, it is used to replenish water lost through the natural process of electrolysis, where hydrogen and oxygen are released. Using anything other than distilled ...



[What Are The Basics Of Watering Lead Acid Batteries?](#)

Watering lead acid batteries is vital for maintaining optimal performance and longevity. It involves checking electrolyte levels and adding distilled water without overfilling, ...

[How to Add Water to Batteries Safely \(Lithium ...\)](#)

As water levels drop, the lead plates inside the battery become exposed, causing damage over time. Adding distilled water keeps the ...



Lead-acid battery

A typical lead-acid battery contains a mixture with varying concentrations of water and acid. Sulfuric acid has a higher density than water, which ...



Do Lead Acid Batteries Need Water?

Lead-acid batteries function as a dependable source of power for everything from automobiles to large-scale deep-cycle applications. The answer to whether these batteries ...



Is Lead Acid A Wet Battery? Key Differences Between Flooded ...

A lead acid battery is a wet cell battery. It contains a liquid electrolyte. These batteries can be serviceable, featuring vented and removable caps for regular checks, or they ...

[What Is Battery Water And Its Function?](#)



Battery water is purified distilled water used in flooded lead-acid batteries to maintain electrolyte levels. It enables ion flow between plates during charge/discharge cycles by replenishing ...



[Battery Acid Vs Distilled Water: A Detailed Comparison](#)

While both battery acid and distilled water are crucial to a lead-acid battery, their roles are different (Related Article: LiFePO4 ...



[Battery Acid vs Distilled Water: What You Need to Know](#)

In lead acid batteries, it is used to replenish water lost through the natural process of electrolysis, where ...



Lead-acid battery

A typical lead-acid battery contains a mixture with varying concentrations of water and acid. Sulfuric acid has a higher density than water, which causes the acid formed at the plates ...

[Battery Acid Vs Distilled Water: A Detailed Comparison](#)



While both battery acid and distilled water are crucial to a lead-acid battery, their roles are different (Related Article: LiFePO4 Battery vs Lead-acid Battery).



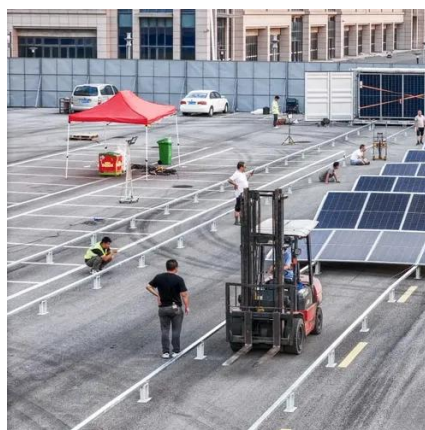
Ultimate Guide to Base Station Power Selection: Lithium vs. Lead-Acid

Choosing the wrong type not only increases O& M costs but may also lead to power outage risks. This guide breaks down the selection logic across three key dimensions: ...



Ultimate Guide to Base Station Power Selection: Lithium vs. Lead ...

Choosing the wrong type not only increases O& M costs but may also lead to power outage risks. This guide breaks down the selection logic across three key dimensions: ...



[How to Add Water to Batteries Safely \(Lithium Excluded\)](#)

As water levels drop, the lead plates inside the battery become exposed, causing damage over time. Adding distilled water keeps the chemical balance right and ensures the ...





Contact Us

For catalog requests, pricing, or partnerships, please visit:

<https://www.asimer.es>

Phone: +34 910 56 87 42

Email: info@asimer.es

Scan the QR code to access our WhatsApp.

