



Is the base station wind power indoor or outdoor





Overview

Wind power is the use of energy to generate useful work. Historically, wind power was used by , and , but today it is mostly used to generate . This article deals only with wind power for electricity generation. Today, wind power is generated almost completely using , generally grouped into and connected to the .

The base station operates on the included AC power cord with optional three AA battery backup. The wireless remote temperature and humidity sensor has a 400' transmission range and requires two AA batteries. The remote wind sensor also has a 400' range and requires two C.

The base station operates on the included AC power cord with optional three AA battery backup. The wireless remote temperature and humidity sensor has a 400' transmission range and requires two AA batteries. The remote wind sensor also has a 400' range and requires two C.

Wind power or wind energy is a form of renewable energy that harnesses the power of the wind to generate electricity. It involves using wind turbines to convert the turning motion of blades, pushed by moving air (kinetic energy) into electrical energy (electricity). Modern wind turbines are.

Wind power is the use of wind energy to generate useful work. Historically, wind power was used by sails, windmills and windpumps, but today it is mostly used to generate electricity. This article deals only with wind power for electricity generation. Today, wind power is generated almost.

The Wind Energy Guidebook contains information and resources to support local governments managing wind energy development in their communities. The Guidebook's chapters address important aspects of wind energy project siting, including environmental considerations, community impacts, permitting.

Whether you're an aspiring meteorologist, a storm chaser, or the most casual of weather nerds, a DIY home weather station delivers the a great way to track Mother Nature. Smartphone weather apps often report outdated-or worse, inaccurate-data. And while your local forecaster is a better source.

How much power can a base station supply using wind?

2:8 to 5:5. But in any case, power supplied using wind cannot exceed 50% of the



total power supply. The green base station solution involves base station system architecture, base station form, power saving technologies, and application of green.

The location of your weather station is the most important part of installation. If your weather station is located under a tree or an overhang, the rainfall data measured by the station will not be correct. If you place your weather station in an alley, you could very well get a wind tunnel effect. What is a land-based wind energy project?

Land-based, utility-scale wind energy projects use highly efficient, state-of-the-art wind turbines that generate cost-competitive electricity at power-plant scales. They can be owned and run by a utility company that then sells the power the plant makes to users, like homeowners, who connect to the electrical grid.

What is wind power & how does it work?

Wind power or wind energy is a form of renewable energy that harnesses the power of the wind to generate electricity. It involves using wind turbines to convert the turning motion of blades, pushed by moving air (kinetic energy) into electrical energy (electricity).

How does offshore wind energy work?

About two-thirds of U.S. offshore wind energy potential exists over waters too deep for today's fixed-bottom wind turbine foundations and instead require floating offshore wind platforms. Electricity from offshore wind is brought to shore via high-voltage direct current transmission lines, then connected to the grid to power homes and businesses.

What is a wind turbine installation?

A wind turbine installation consists of the necessary systems needed to capture the wind's energy, point the turbine into the wind, convert mechanical rotation into electrical power, and other systems to start, stop, and control the turbine.



Is the base station wind power indoor or outdoor



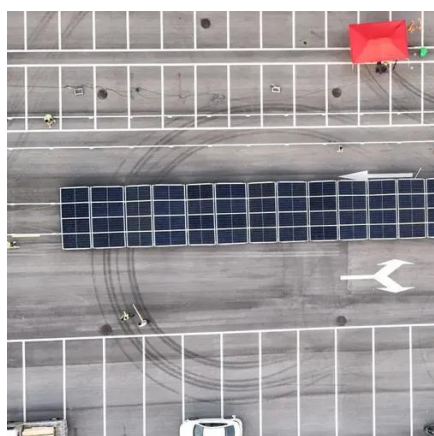
Wind power

Overview
Wind energy resources
Wind farms
Wind power capacity and production
Economics
Small-scale wind power
Impact on environment and landscape
Politics

Wind power is the use of wind energy to generate useful work. Historically, wind power was used by sails, windmills and windpumps, but today it is mostly used to generate electricity. This article deals only with wind power for electricity generation. Today, wind power is generated almost completely using wind turbines, generally grouped into wind farms and connected to the electrical grid.

[Is the base station wind power indoor or outdoor](#)

What is a green base station? The Green Base Station which is introduced is equipped with the regenerative energy sources wind power and photo-voltaic energy to reduce the power ...



DETAILS AND PACKAGING



1 USER MANUAL PDF 2 RJ45 Cable For RS485/CAN 3 Battery in Parallel Cables
4 RJ45 TO USB Monitor Cable 5 M3 Terminal*4

[Installing your Personal Weather Station](#)

The standard wind measurement should be taken at 10 meters (33 feet) above the ground. A rooftop works the best. Try to place the anemometer as high as is convenient.

[Installing your Personal Weather Station](#)



The standard wind measurement should be taken at 10 meters (33 feet) above the ground. A roof-top works the best. Try to place the ...



[New York Wind Energy Guidebook for Local Governments](#)

Wind energy, both land-based and offshore, is instrumental for New York State to reach its clean energy goals of 70% renewable energy by 2030 and 100% clean electricity by 2040.

Wind Energy , Department of Energy

About two-thirds of U.S. offshore wind energy potential exists over waters too deep for today's fixed-bottom wind turbine foundations and instead require floating offshore wind ...



[Color Wind Speed Weather Station with Two ...](#)

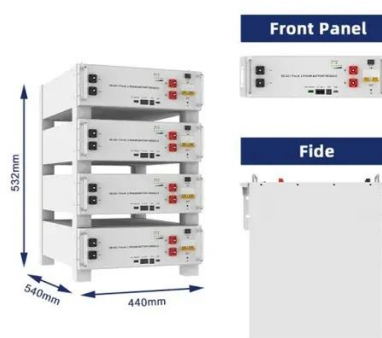
The colorful LCD display can be adjusted to five levels of brightness, and provides clear easy-to-read displays of indoor and outdoor temperature ...



[Common issues with Weather Stations and how to fix them!](#)



I'm not getting any outdoor readings on my base station from my outdoor sensors, what should I do? This is one of the most common issues that we see here, and in general it is quite an easy ...

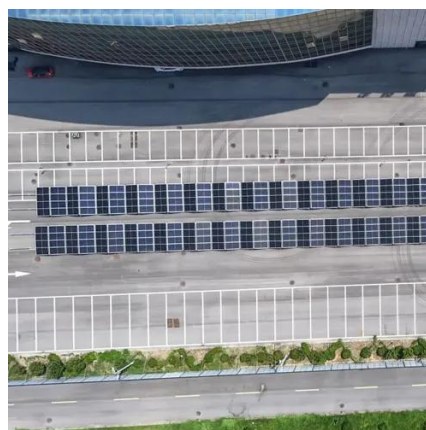


Wind power

Wind power is the use of wind energy to generate useful work. Historically, wind power was used by sails, windmills and windpumps, but today it is mostly used to generate electricity. This ...

Color Wind Speed Weather Station with Two Wireless Remote ...

The colorful LCD display can be adjusted to five levels of brightness, and provides clear easy-to-read displays of indoor and outdoor temperature and humidity; numerical and graphic wind ...



Best home weather station 2025: Which one should you choose , TechHive

Netatmo Weather Station comes with the base station and one indoor/outdoor temperature/humidity sensor, but you also need the rain and wind gauges to really enjoy this ...

New York State Wind Energy Guide



Explanation of wind energy basics as it relates to important topics for local officials. Topics covered include local officials' role in planning and permitting, environmental impacts, health ...



[New York Wind Energy Guide for Local Decision Makers: ...](#)

Curve Power production from a wind turbine is a function of wind speed. The relationship between wind speed and power is defined by a power curve, which is unique to each turbine model ...

[Best home weather station 2025: Which one ...](#)

Netatmo Weather Station comes with the base station and one indoor/outdoor temperature/humidity sensor, but you also need the rain ...





Contact Us

For catalog requests, pricing, or partnerships, please visit:

<https://www.asimer.es>

Phone: +34 910 56 87 42

Email: info@asimer.es

Scan the QR code to access our WhatsApp.

