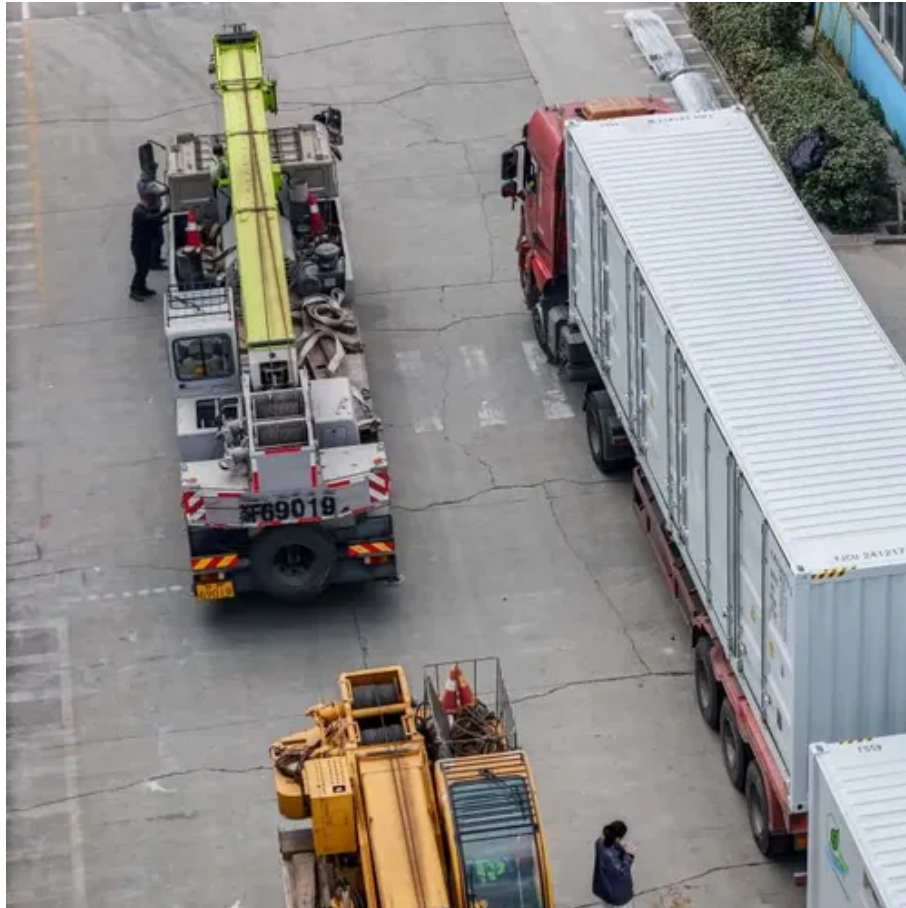




Lilongwe Mobile Energy Storage Container Single-Phase Retail





Lilongwe Mobile Energy Storage Container Single-Phase Retail

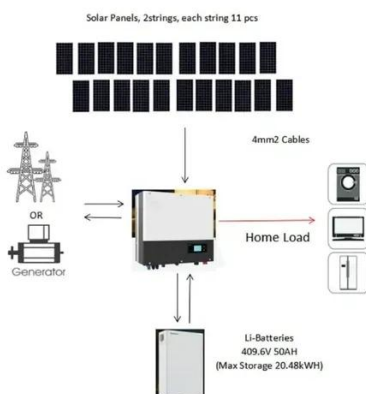


[Lilongwe, Malawi: The Ultimate Travel Guide 2025](#)

Discover Lilongwe, Malawi with our ultimate 2025 travel guide. Find the best accommodations, local restaurants, must-visit attractions, and practical tips for exploring the ...

[Lilongwe - Capital City - Visit Malawi](#)

Lilongwe started as a small village on the banks of the Lilongwe River, and became a British colonial administrative centre at the start of the 20th century. Lilongwe is sometimes referred ...



Lilongwe , Central Malawi

Lilongwe became Malawi's capital in 1975, a role previously filled by Zomba. It owes its status to Dr Hastings Banda, the country's first President, who was born just north of the town. The Old ...

[15 Best Things To Do In Lilongwe, Malawi](#)

Planning an exciting escapade to the enchanting southeastern African city of Malawi? Check out this list of the best things to do in Lilongwe, Malawi.

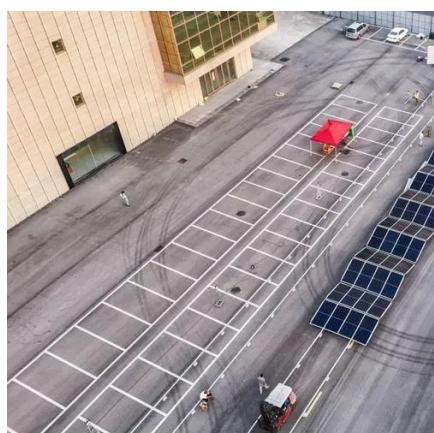


Visit Lilongwe

Visit Lilongwe, Malawi's capital. Discover things to do in Lilongwe, where to stay, and why Lilongwe travel is a perfect start to a safari.

[Lilongwe, Malawi: All You Must Know Before You Go \(2025\)](#)

The quiet capital of Malawi, Lilongwe is divided into New and Old Towns. The Old Town is where to go for bustling stores, markets, cafes, hotels, and restaurants. The New Town houses ...



Lilongwe

Lilongwe is located on a plateau in Central Malawi, forming part of the East African Rift Valley situated at an altitude of 1,050 m (3,440 ft) above sea level, along Lilongwe River.

Lilongwe, Malawi



Lilongwe, the capital city of Malawi, offers a unique blend of urban and natural experiences. As one of the fastest-growing cities in Africa, it is characterized by a mix of modernity and ...



[Lilongwe , Malawi, Map, & History , Britannica](#)

Lilongwe, city, capital (since 1975) of Malawi. Lilongwe, which was named for a nearby river, is located on the inland plains and is the one of the largest cities in the country. It became a ...

Lilongwe

Lilongwe is Malawi's capital and a cultural hub, serving as a crossroads where government buildings, embassies, and wildlife sanctuaries coexist with vibrant markets and local art hubs.





Contact Us

For catalog requests, pricing, or partnerships, please visit:

<https://www.asimer.es>

Phone: +34 910 56 87 42

Email: info@asimer.es

Scan the QR code to access our WhatsApp.

