



Lithium power station factory in New-Zealand





Overview

The BESS will be installed at Huntly Power Station on New Zealand's North Island. The BESS will be based on 70 of Saft's 'Intensium Shift+' lithium-ion battery containers combined with power conversion and control systems. It is scheduled to come online in the third quarter of 2026.

The BESS will be installed at Huntly Power Station on New Zealand's North Island. The BESS will be based on 70 of Saft's 'Intensium Shift+' lithium-ion battery containers combined with power conversion and control systems. It is scheduled to come online in the third quarter of 2026.

Genesis Energy, a publicly listed energy company in New Zealand, has commenced construction on a significant battery energy storage system (BESS) with a capacity of 100MW/200MWh. The announcement was made on June 5, 2025, and the project will be situated at the Huntly Power Station, located in the.

The project will be developed at the Huntly Power Station, New Zealand's largest thermal power station. Image: Genesis Energy. Genesis Energy, a listed New Zealand generation, wholesale, and retail energy company, has started constructing a 100MW/200MWh battery energy storage system (BESS) on the.

Huntly Power Station will soon do more than generate electricity; it will also store it in a 100 MW grid scale battery. Construction of the project kicked off on site on 5 June, in a ceremony attended by the Minister for Energy Simon Watts, Tukuroirangi Morgan, chair of Te Arataura, the executive.

Construction of a 200 MWh battery energy storage system has commenced on New Zealand's North Island as part of power company Genesis Energy's plans to transform the country's largest thermal power station to renewables. Genesis Energy CEO Malcolm Johns, left, and NZ Energy Minister Simon Watts at.

Contact is developing a 100-megawatt battery at New Zealand Steel's Glenbrook site, in south Auckland, on industrially zoned farmland near the corner of Brookside Road and Glenbrook Beach Road. This site is ideal as it has flat land and a high voltage connection to the national grid. We have.

The TotalEnergies subsidiary will supply 70 of its Intensium Shift+ battery



containers as part of a plan to transform the coal- and gas-fired power site to renewables. The Saft battery division of French energy and petroleum multinational TotalEnergies will supply 70 of its containerized Intensium.



Lithium power station factory in New-Zealand



[Genesis Energy begins construction on 200MWh ...](#)

Genesis Energy, a listed New Zealand generation, wholesale, and retail energy company, has started constructing a 100MW/200MWh ...

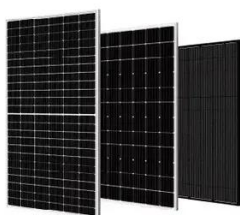
[Genesis kicks off battery construction at Huntly ...](#)

Huntly Power Station will soon do more than generate electricity; it will also store it in a 100 MW grid scale battery.



Saft to supply 200 MWh battery storage project in New Zealand

Power company Genesis Energy Ltd is installing the utility-scale lithium-ion BESS at the coal- and gas-fired Huntly Power Station as part of its "Huntly Portfolio" of energy ...



[Genesis begins battery build at thermal power station site](#)

Construction of a 200 MWh battery energy storage system has commenced on New Zealand's North Island as part of power company Genesis Energy's plans to transform the ...



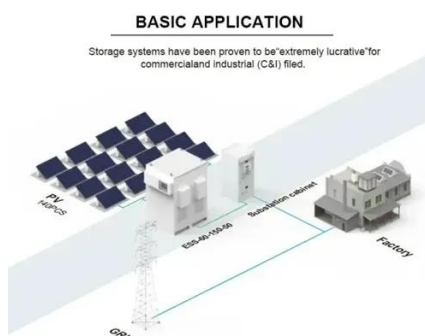
Huntly Power Station

The Huntly Power Station is the largest thermal power station in New Zealand and is located in the town of Huntly in the Waikato. It is operated by Genesis Energy Limited, a publicly listed ...



[Saft wins 200MWh Genesis Energy New Zealand BESS contract](#)

The BESS will be installed at Huntly Power Station on New Zealand's North Island. The BESS will be based on 70 of Saft's 'Intensium Shift+' lithium-ion battery containers ...



[Genesis Energy Starts Construction of ...](#)

The announcement was made on June 5, 2025, and the project will be situated at the Huntly Power Station, located in the Waikato region, ...



Standard 20ft containers

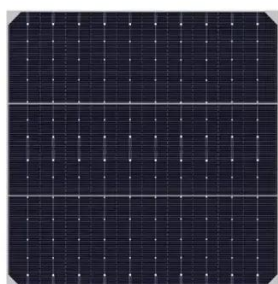


Standard 40ft containers

[Glenbrook-Ohurua Battery , Contact Energy](#)



Contact is developing a 100-megawatt battery at New Zealand Steel's Glenbrook site, in south Auckland, on industrially zoned farmland near the corner of Brookside Road and Glenbrook ...



Genesis Energy begins construction on 200MWh BESS in New Zealand

Genesis Energy, a listed New Zealand generation, wholesale, and retail energy company, has started constructing a 100MW/200MWh battery energy storage system (BESS) ...

Genesis Energy Starts Construction of 100MW/200MWh Battery ...

The announcement was made on June 5, 2025, and the project will be situated at the Huntly Power Station, located in the Waikato region, which is home to New Zealand's ...



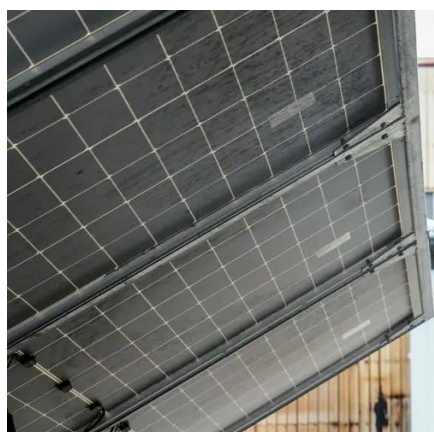
Genesis kicks off battery construction at Huntly Power Station

Huntly Power Station will soon do more than generate electricity; it will also store it in a 100 MW grid scale battery.

[Saft provides 100MW/200MWh BESS for New Zealand](#)



The Huntly Portfolio, located at Huntly Power Station on the country's North Island is the single largest electricity generation site in New Zealand, currently using gas and coal ...



[Glenbrook-Ohurua Battery , Contact Energy](#)

Contact is developing a 100-megawatt battery at New Zealand Steel's Glenbrook site, in south Auckland, on industrially zoned farmland near the ...

[Genesis begins battery build at thermal power ...](#)

Construction of a 200 MWh battery energy storage system has commenced on New Zealand's North Island as part of power company ...



Saft energy storage system to support New Zealand's transition ...

Saft lithium-ion technology will provide 100 MW power and 200 MWh storage capacity to support grid stability as intermittent wind and solar power increases in New Zealand

[Saft to supply 200 MWh battery storage project in ...](#)



Power company Genesis Energy Ltd is installing the utility-scale lithium-ion BESS at the coal- and gas-fired Huntly Power Station as ...





Contact Us

For catalog requests, pricing, or partnerships, please visit:

<https://www.asimer.es>

Phone: +34 910 56 87 42

Email: info@asimer.es

Scan the QR code to access our WhatsApp.

