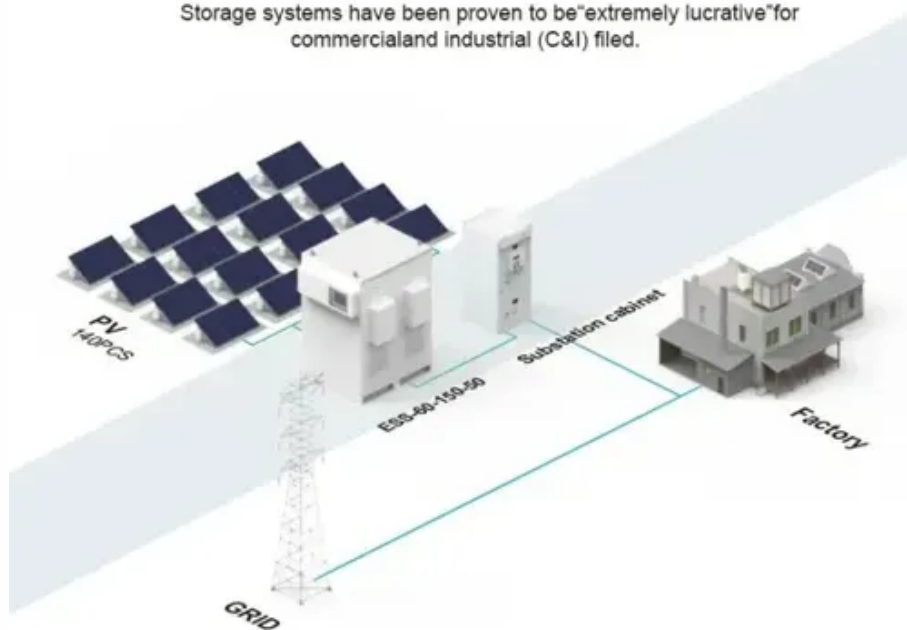




# New Zealand Translucent Series solar Curtain Wall Glass Module 550w

## BASIC APPLICATION

Storage systems have been proven to be "extremely lucrative" for commercial and industrial (C&I) filed.





## New Zealand Translucent Series solar Curtain Wall Glass Module 550w



### [Translucent Unitized Curtain Wall Technology - Kalwall](#)

Get the best of all worlds by integrating fixed or operable windows, opaque panels and/or louvers to a seamless ...

### [Translucent Unitized Curtain Wall Technology - Kalwall](#)

Get the best of all worlds by integrating fixed or operable windows, opaque panels and/or louvers to a seamless translucent curtain-wall design. Standard shoji or a variety of optional grid ...



### [WAAREE 550Wp 144Cells 24 Volts Framed Dual...](#)

Elevate your energy with Waaree's 550Wp 144Cells Framed Dual-Glass ...

### [BIPV Curtain Wall: Innovative Solar Power ...](#)

Transparent photovoltaic glass curtain wall is an innovative product that combines solar power generation technology with building curtain walls. It ...



### [BIPV Curtain Wall: Innovative Solar Power Solution](#)

Transparent photovoltaic glass curtain wall is an innovative product that combines solar power generation technology with building curtain walls. It is composed of transparent glass modules ...

### [Photovoltaic Glass , Thermosash Building ...](#)

They are available in either transparent or translucent glass with integrated solar cells to convert clean electric solar energy into electricity. This ...



### [Photovoltaic Glass , Thermosash Building Envelope Solutions](#)

They are available in either transparent or translucent glass with integrated solar cells to convert clean electric solar energy into electricity. This means that power for a building could be ...



### [WAAREE 550Wp 144Cells 24 Volts Framed Dual Glass Mono ...](#)

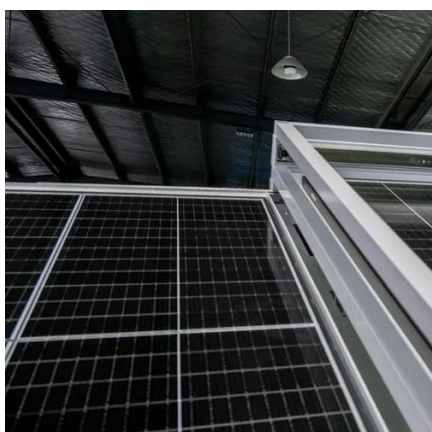


Elevate your energy with Waaree's 550Wp 144Cells Framed Dual-Glass Mono PERC Bifacial Module. Discover solar modules online at affordable prices.



### [HT-SAAE 550W Bifacial Solar Panel , Silver Frame](#)

Harness the power of the sun from both sides with the high-efficiency HT-SAAE 550W Bifacial Monocrystalline Solar Panel -- engineered for ...



### [HT72-18X Transparent 550W Bifacial Solar Panel](#)

Discover the innovative HT-SAAE HT72-18X Transparent 550W Bifacial Solar Panel, equipped with Half-Cut and Bifacial technologies for bi-directional energy production. With high efficiency ...

- LiFePO<sub>4</sub>
- Wide temp: -20°C to 55°C
- Easy to expand
- Floor mount&wall mount
- Intelligent BMS
- Cycle Life:≥6000
- Warranty :10 years



### [HT-SAAE 550W Bifacial Solar Panel , Silver Frame](#)

Harness the power of the sun from both sides with the high-efficiency HT-SAAE 550W Bifacial Monocrystalline Solar Panel -- engineered for maximum energy output, superior durability, ...



### [Jinergy 550W solar panel half cell mono NZ compliant](#)



These high quality solar panels are in NZ "white listed" (insurance relevant). The solar panel market is a mess and getting trusted quality is important for your investment.

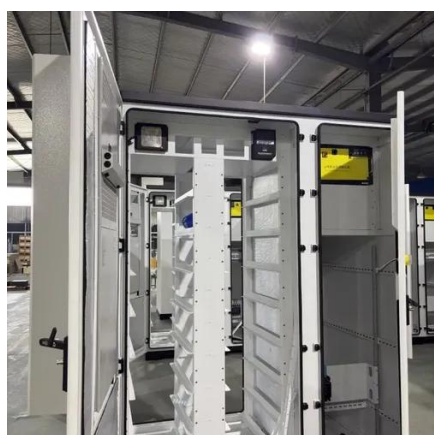


### [New HT Solar 550W 144 Half Cell Solar Panel , SanTan Solar](#)

Harness the power of the sun from both sides with the high-efficiency HT-SAAE 550W Bifacial Monocrystalline Solar Panel -- engineered for maximum energy output, superior durability, ...

### [New HT Solar 550W 144 Half Cell Solar Panel](#)

Harness the power of the sun from both sides with the high ...



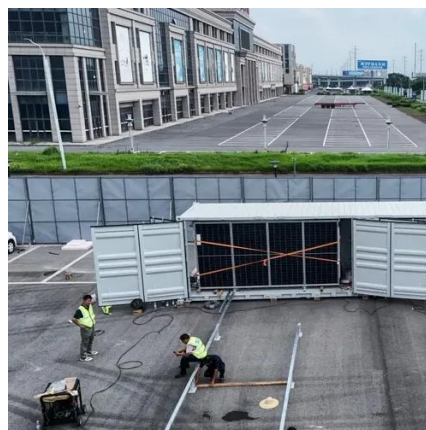
### **TW Solar Panel 550W**

Rosen Solar, with more than 4 automatic lamination lines, are professional manufacturer of solar panels with wide power range from 5w to 300W, 450W, 550W, 600W, 650W, 680W, 700W, ...

### [550 W , LVTOPSUN-PANEL-550W-LVTS144M HALF CELL , NCA SOLAR](#)



With a maximum power output of 550W and a cell efficiency of 21.3%, it is ideal for those looking to maximize energy production on limited space. The panel utilizes half-cell technology, which ...





## Contact Us

---

For catalog requests, pricing, or partnerships, please visit:

<https://www.asimer.es>

Phone: +34 910 56 87 42

Email: [info@asimer.es](mailto:info@asimer.es)

Scan the QR code to access our WhatsApp.

