



On-site energy solar model recommendation





Overview

This paper proposes a machine learning model to forecast site-specific ambient temperature and solar irradiance. The results contribute to the generation of low-cost data-driven models to save money by eliminating the need to install on-site sensors.

This paper proposes a machine learning model to forecast site-specific ambient temperature and solar irradiance. The results contribute to the generation of low-cost data-driven models to save money by eliminating the need to install on-site sensors.

Installing on-site renewable energy systems is a common strategy facility owners can use to save money, reduce their greenhouse gas emissions, and add resiliency to their facilities by generating their own electricity. Many facilities have recognized the advantages of on-site renewable energy.

The U.S. Department of Energy's (DOE) Onsite Energy Technical Assistance Partnerships (TAPs) help American industrial and other large energy users lower costs, install onsite energy technologies, and increase resilience, security and energy independence. What Is Onsite Energy?

Onsite energy refers.

Onsite solar is an asset installed in the same location where the energy generated will be consumed. For each kilowatt-hour (kWh) the onsite solar asset produces, a kWh of consumption will be offset for a buyer of renewable energy, or offtaker. These systems are often described as "behind the.

This guide describes a variety of approaches that local governments can use to advance climate and energy goals by meeting some or all of their electricity needs through on-site renewable energy generation. The sections in this guide discuss how local governments can work with utilities, local.

There is at least one decarbonization lever that meets this challenge without compromising between the short and long-term: on-site solar photovoltaic (PV) programs for Power Purchase Agreements (PPA), which deliver both immediate and long-term benefits. Our research has shown that organizations of.



PURPOSE: This high-level overview of on-site clean energy generation includes a summary of technology options, ownership models, benefits, risks, and other considerations for Energy Customers that are exploring on-site projects. It is intended to equip the reader with a grasp of the key. Do solar systems need to be located onsite?

These systems need not be located onsite. For more information, refer to National Renewable Energy Laboratory's (NREL's) *A Guide to Community Shared Solar: Utility, Private, and Nonprofit Project Development*². PV systems produce energy by converting photons into direct current (DC) electricity.

How can on-site solar PV & energy storage improve sustainability?

To achieve sustainability goals while meeting the increasing electricity demands of electrification, organizations are pairing on-site solar PV generation with on-site energy storage. These systems, which are considered as "behind-the-meter" (BTM) systems, allow facilities to maximize the benefits of on-site renewable generation.

Can a community shared solar system be installed onsite?

Some states and jurisdictions allow for "community shared" solar installations. Community shared solar systems are solar-electric systems that provides power and/or financial benefit to multiple community members. These systems need not be located onsite.

Should solar PV production be reduced on-site?

Increasing the amount of solar PV production on-site can provide additional cost and emission reductions and resiliency benefits for facilities. However, the additional generation that can result from larger systems during peak daylight hours must be exported or managed through curtailment on-site.



On-site energy solar model recommendation



[Home Solar Panels and Systems , Tesla](#)

Tesla solar makes it easy to produce clean, renewable energy for your home and to take control of your energy use. Learn more about solar.

Predicting on-site solar energy generation using off-site weather

This paper proposes a machine learning model to forecast site-specific ambient temperature and solar irradiance. The results contribute to the generation of low-cost data ...



On-Site Renewable Energy Generation

This guide describes a variety of approaches that local governments can use to advance climate and energy goals by meeting ...

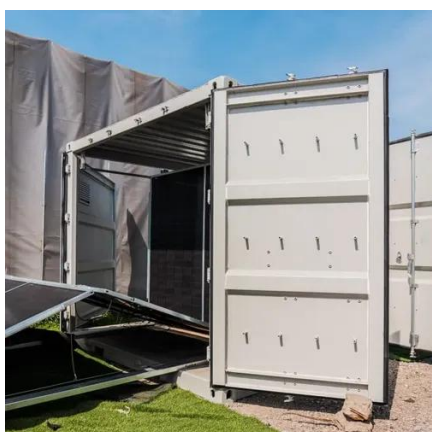
[2014-09-25_Solar_Decision_Guide_\(updated_11\)](#)

Community shared solar systems are solar-electric systems that provides power and/or financial benefit to multiple community members. These systems need not be located onsite.



[How Onsite Solar Can Transform Your Energy ...](#)

Several factors should be considered when deploying onsite solar, including space, site conditions, electricity rate, and state and utility policies and ...



[Onsite Solar Programs: A Low-Cost High-Impact...](#)

There is at least one decarbonization lever that meets this challenge without compromising between the short and long-term: on-site ...



Onsite Solar Programs: A Low-Cost High-Impact... , ENGIE Impact

There is at least one decarbonization lever that meets this challenge without compromising between the short and long-term: on-site solar photovoltaic (PV) programs for ...



Product Model
HJ-ESS-215A(100KW/215KWh)
HJ-ESS-115A(50KW 115KWh)

Dimensions
1600*1280*2200mm
1600*1200*2000mm

Rated Battery Capacity
215KWH/115KWH

Battery Cooling Method
Air Cooled/Liquid Cooled

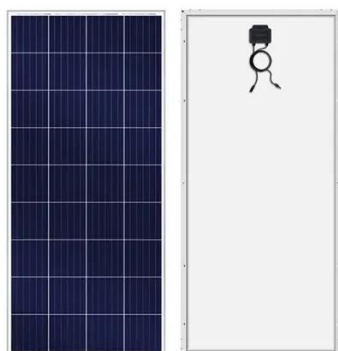


ENERGY STORAGE SYSTEM

[Maximizing the Benefits of On-Site Renewable Energy ...](#)



This resource provides an overview of common renewable generation, storage, and load management technologies that can be integrated into facilities. It also shows how generation ...



On-Site Renewable Energy Generation

This guide describes a variety of approaches that local governments can use to advance climate and energy goals by meeting some or all of their electricity needs through on ...

[On-Site Renewable Technologies: Powering Low-Carbon Futures](#)

Explore on-site renewable technologies like solar PV, wind, and CHP systems to reduce emissions, cut costs, and enhance energy resilience for your business.



[Onsite Energy Program: Technical Assistance to Adopt ...](#)

The Onsite Energy Program leverages a regional network of Technical Assistance Partnerships to help industrial facilities and other large energy users increase the adoption of onsite energy ...

[On-Site Renewable Technologies: Powering Low ...](#)



Explore on-site renewable technologies like solar PV, wind, and CHP systems to reduce emissions, cut costs, and enhance energy ...



[How Onsite Solar Can Transform Your Energy Strategy , Trio](#)

Several factors should be considered when deploying onsite solar, including space, site conditions, electricity rate, and state and utility policies and incentives.



[INTRODUCTION TO ON-SITE CLEAN ENERGY](#)

Energy customers should select the most appropriate model for their specific needs and local market conditions. A company's role in the construction of an on-site project will vary based on ...





Contact Us

For catalog requests, pricing, or partnerships, please visit:

<https://www.asimer.es>

Phone: +34 910 56 87 42

Email: info@asimer.es

Scan the QR code to access our WhatsApp.

