



# Outdoor base station basic ground network





## Overview

---

This document is intended to help you set up and configure your WBSn-2400-O or WBSn-2400-S base station, using the online Setup wizard. Note: Throughout this document, unless specified otherwise, the use of the product name WBSn-2400 refers to both the WBSn-2400-O and WBSn-2400-S base.

This document is intended to help you set up and configure your WBSn-2400-O or WBSn-2400-S base station, using the online Setup wizard. Note: Throughout this document, unless specified otherwise, the use of the product name WBSn-2400 refers to both the WBSn-2400-O and WBSn-2400-S base.

A semi-permanent or permanent base station helps to eliminate the types of error that can result from repeated daily setups, and ensures that you always use the GNSS antenna at the exact original location. The requirement for a permanent base station setup increases as more receivers that use the.

After antennas, station grounding is probably the most discussed subject in amateur radio and it is also the one replete with the most misconceptions. The first thing to know is that there are three functions served by grounding in ham shacks: 1. Electrical Safety 2. Stray RF Suppression (or simply.

e NEC (National Electric Code). You can ground your mast by connecting a heavy (6 AWG minimum) ground wire between your mast and your ground rod, you attach your ground wire to it. You might find that your yard contains more rock than dirt, preventing you from driving your rod all the way in. In.

About This Document This document is guidance of Nova-436Q hardware installation for installation personnel, including the preparation of installation tools and supporting materials, the demands for installation environment, installation procedure, cable connection, and power on. Accomplishing the.

Built for the toughest environments, the MultiTech Conduit® IP67 Base Station delivers secure, reliable LoRaWAN® connectivity for outdoor and industrial IoT deployments. Now, every unit ships with an industry-leading 5-year manufacturer's warranty, providing unmatched peace of mind and long-term.

A proper grounding system is one of the most critical aspects of setting up a high-



powered amateur radio station. It not only ensures safety but also helps in achieving optimal performance of your equipment by reducing interference, protecting your gear, and preventing damage from lightning strikes.



## Outdoor base station basic ground network

### Tech corner Your station ground

In your shack your coax and ground can enter. You should get hold of a thick sheet of steel or copper and moun it on your shack wall or desk. This is known as yo r ground panel or ground ...



### Wavion LTD.

The following section describes the installation and configuration procedures for your WBSn-2400-O or WBSn-2400-S base station, that will enable the establishment of a basic set-up.

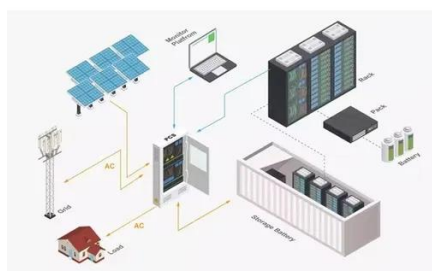
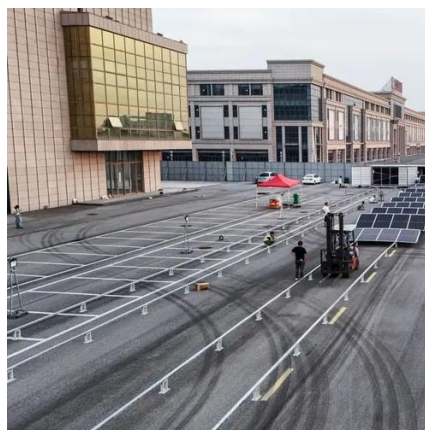


### Embrace the outdoor

Streamlined maintenance and operation: Building PMR networks with outdoor base stations eliminates the need for batteries, air conditioning units, and large spare parts stocks ...

### [CableFree Outdoor 4G & 5G LTE SDR Small Cell Base Station](#)

Experience CableFree's 4G & 5G LTE Small Cell outdoor base stations with software-defined radio for great flexibility, high performance & low operation costs.

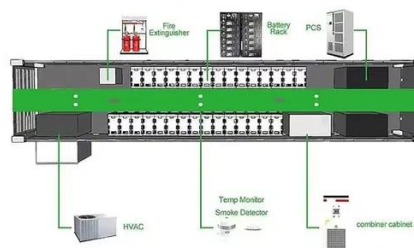


### Base Station Antennas at CB World!

CB World offers several indoor and outdoor base station antennas such as Omnidirectional Base Station Antennas, VHF Base Station Antennas, Yagi Antennas, Discone Antennas, and more!

### [CableFree Outdoor 4G & 5G LTE SDR Small Cell ...](#)

Experience CableFree's 4G & 5G LTE Small Cell outdoor base stations with software-defined radio for great flexibility, high performance & low ...



### The Essential Guide to Grounding Systems for High-Powered ...

Grounding your high-powered amateur radio station is not just a safety measure; it is essential for maintaining optimal performance and longevity of your equipment.

### Grounding

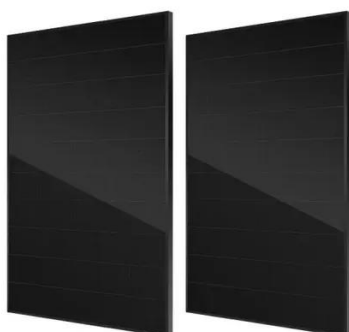


Introduction Quotes Functions Safety Resources Examples Advantages After antennas, station grounding is probably the most discussed subject in amateur radio and it is also the one replete with the most misconceptions. The first thing to know is that there are three functions served by grounding in ham shacks: 1. Electrical Safety 2. Stray RF Suppression (or simply RF Grounding) 3. Lightning Protection. Each has it See more on arrl Images of Outdoor Base Station Basic Ground Network Ground Base Station Outdoor Base Station Outdoor 5G Base Station Telecom Outdoor Small Cell Base Station Telecom Outdoor Equipment Base Station In Cellular Network Mobile Network Base Station Microwave Outdoor Wireless Backhaul 43dBm LTE Private Network Base Station Outdoor IP67 AC 100-240VA top level block diagram of the outdoor base transceiver station (BTS China NB-IOT Outdoor Base Station Manufacture and Factory , MoreLink Outdoor LTE Base Station - RKTPL's 4G Network Solutions Outdoor Wireless Base Station, 802.11a/n, 5Ghz - UNIX CCTV Baicells Nova-436Q Outdoor LTE Base Station Installation Guide TetraFlex Outdoor Base Station System - Mining Technology Types of Base Stations - GeeksforGeeks Securing UAV Flying Base Station for Mobile Networking: A Review See all Noji [PDF]



## Tech corner Your station ground - noji

In your shack your coax and ground can enter. You should get hold of a thick sheet of steel or copper and moun it on your shack wall or desk. This is known as yo r ground panel or ground ...



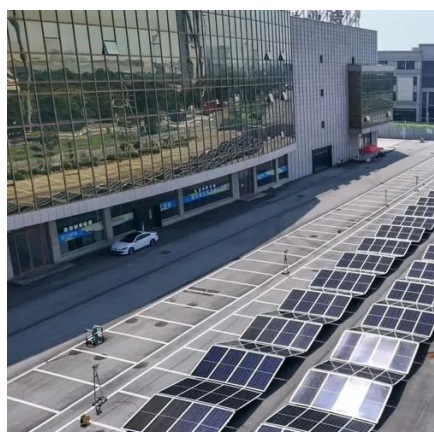
### [Conduit® IP67 Base Station Cellular Industrial ...](#)

Bundled for easy deployment, the solution includes a Conduit with a LoRa mCard(TM), IP67 enclosure and LoRa antenna to improve outdoor range. It ...



## Baicells Nova-436Q Outdoor LTE Base Station Installation ...

1.1 Introduction Baicells Nova-436Q is a high-performance outdoor micro base station based on LTE TDD technology, which is developed by Baicells. The Nova-436Q supports wired ...



## [The Essential Guide to Grounding Systems for ...](#)

Grounding your high-powered amateur radio station is not just a safety measure; it is essential for maintaining optimal performance and ...

## Grounding

One wire of the feedline connects to the base of the antenna, and the other connects to ground. The connection to ground has to have a low RF resistance, or you'll expend too much of your ...



## [Common ways to set up a base station](#)

A semi-permanent or permanent base station helps to eliminate the types of error that can result from repeated daily setups, and ensures that you always use the GNSS antenna at the exact ...

## [Conduit® IP67 Base Station Cellular Industrial Gateways](#)



Bundled for easy deployment, the solution includes a Conduit with a LoRa mCard(TM), IP67 enclosure and LoRa antenna to improve outdoor range. It also provides a choice of cellular 4G ...





## Contact Us

---

For catalog requests, pricing, or partnerships, please visit:

<https://www.asimer.es>

Phone: +34 910 56 87 42

Email: [info@asimer.es](mailto:info@asimer.es)

Scan the QR code to access our WhatsApp.

