



# Power breaker switch factory in Toronto





## Overview

---

Powersmiths, a proud member of the Socomec Group, is thrilled to announce the opening of its new factory. This facility marks the third Powersmiths factory in the Brampton Area, underscoring our unwavering commitment to providing our clients with exceptional service and top-quality.

Powersmiths, a proud member of the Socomec Group, is thrilled to announce the opening of its new factory. This facility marks the third Powersmiths factory in the Brampton Area, underscoring our unwavering commitment to providing our clients with exceptional service and top-quality.

Commercial Switchgear Limited (CSL), a RESA Power company, is a CSA approved manufacturer of heavy duty enclosures, protection and control units, and electrical power distribution equipment for low and medium voltage applications. All equipment is built and tested to International, National.

In today's global market, sourcing electrical equipment can come with a hidden cost: tariffs. We stock a large inventory of electrical equipment from all the major manufacturers. All of our equipment is tested by skilled technicians and satisfies all industry performance standards. Rev-Amp.

Our outdoor medium voltage and high voltage switchgear is expertly crafted to withstand Canada's extreme weather conditions, ensuring reliable performance in the face of icy cold, intense heat, and volatile storms. The flexible design focuses on safety and durability, incorporating high-grade.

Powersmiths, a proud member of the Socomec Group, is thrilled to announce the opening of its new factory. This facility marks the third Powersmiths factory in the Brampton Area, underscoring our unwavering commitment to providing our clients with exceptional service and top-quality products. As the.

Medium voltage switchgears such as gas-insulated switchgears, metal-clad arc-resistant switchgears, metal-clad switchgears & metal-enclosed load interrupter switchgears are available. Medium-voltage gas-insulated switchgears range in voltage ratings from 15 kV to 45 kV. Medium-voltage metal-clad.

Here's a guide on how to install switchgears in a commercial property: Before you



can start installing a switchgear system, you need to determine the load requirements of the building. This involves calculating the amount of power that the building will consume and the number of circuits that will.



## Power breaker switch factory in Toronto

---

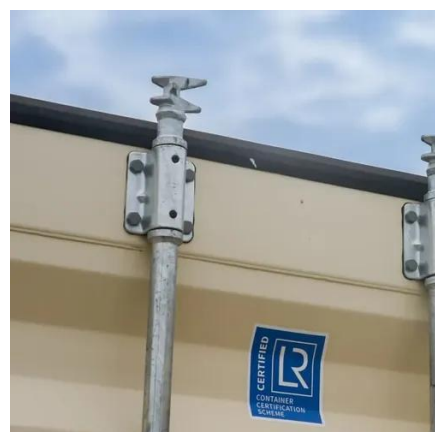


### Custom Switchgear Manufacturers

T& T Power Group manufactures medium and high-voltage custom switchgear in Canada, with fast lead times, bespoke designs and competitive prices.

### [Switchgears, Toronto -- Made Electric](#)

Contact us today to learn more about switchgears for commercial facilities! Our electricians are knowledgeable and skilled, and we are proud to provide quick and efficient service in Toronto ...



### [Rev-Amp Electrical Equipment Canada Ontario Toronto](#)

Rev-Amp Electrical distributes new, surplus, used, and obsolete circuit breakers, switchgears, switchboards, and bus plugs online. Shop top brands like Eaton, Cutler-Hammer, GE, Square ...

### MGB Group

Winding, repair, rewinds and modifications of power transformers. Largest stock of used switchgear, circuit breakers and power transformers in ...



[Uncover Switchgear Suppliers near you in Ontario.](#)

View accurate contact info for Ontario Switchgear Suppliers. Request quotes from several Distributors and Switchgear Manufacturers at Canadian Trade Index.



[Power Circuit Breakers and Non-Automatic Switches](#)

They are the ideal OEM solution for low voltage switchgear and customized power distribution assemblies used in Data Centers, Standby Power, Industrial, Healthcare and Commercial ...



51.2V 150AH, 7.68KWH

**MGB Group**

Winding, repair, rewinds and modifications of power transformers. Largest stock of used switchgear, circuit breakers and power transformers in Canada.



**Powersmiths Unveils State-of-the-Art Factory in the Greater Toronto ...**



Powersmiths, a proud member of the Socomec Group, is thrilled to announce the opening of its new factory. This facility marks the third Powersmiths factory in the Brampton Area, ...



[Commercial Switchgear Limited , RESA Power](#)

All sheet metal, painting, bus work, assembly and testing is done in our factory. Our trained personnel make every effort to ensure customer satisfaction for quality and on time delivery.

[Eaton Electrical Canadian Operations, Burlington, Ontario](#)

Electrical products include: Moulded case circuit breakers, power circuit breakers, Motor starters, Motor Control Centers, Switchboards, panelboards and residential panelboards, power ...



[Powersmiths Unveils State-of-the-Art Factory in the ...](#)

Powersmiths, a proud member of the Socomec Group, is thrilled to announce the opening of its new factory. This facility marks the third Powersmiths ...

[Switchgear in or near Ontario \(ON\) on Thomasnet](#)



Full Service distributor of generators, power systems, & related accessories. Products include generators, generator sets, transfer switches, & switchgears. In-shop & mobile ...



### Custom Switchgear Manufacturers

T& T Power Group manufactures medium and high-voltage custom switchgear in Canada, with fast lead times, bespoke designs and ...

### [Switchgears, Toronto -- Made Electric](#)

Contact us today to learn more about switchgears for commercial facilities! Our electricians are knowledgeable and skilled, and we are proud to ...



### [Power Circuit Breakers and Non-Automatic Switches](#)

They are the ideal OEM solution for low voltage switchgear and customized power distribution assemblies used in Data Centers, Standby Power, ...





## Contact Us

---

For catalog requests, pricing, or partnerships, please visit:

<https://www.asimer.es>

Phone: +34 910 56 87 42

Email: [info@asimer.es](mailto:info@asimer.es)

Scan the QR code to access our WhatsApp.

