



Power generation per square meter of solar panels in the north





Overview

Estimate your solar energy production per m² with accurate calculations for any location. Free calculator with multiple units, efficiency modes, and detailed visualizations.

Estimate your solar energy production per m² with accurate calculations for any location. Free calculator with multiple units, efficiency modes, and detailed visualizations.

Measuring solar energy per square meter helps evaluate electricity generation capabilities and is crucial for assessing solar panels' effectiveness and solar farms' ability to harness sunlight and reduce fossil fuel dependence, which contributes to climate change. What is Solar Energy Per Square.

Estimates the energy production of grid-connected photovoltaic (PV) energy systems throughout the world. It allows homeowners, small building owners, installers and manufacturers to easily develop estimates of the performance of potential PV installations. Operated by the Alliance for Sustainable.

Solar panels have become a cornerstone of renewable energy, but many wonder: How much power can a single square meter of solar panels actually produce?

Let's break down the science behind photovoltaic efficiency. Under optimal conditions (5 peak sun hours): At noon under direct sunlight: *Note: 1m².

How much does solar energy generate per square meter?

1. Solar energy generation per square meter can vary significantly, but typical values indicate that 1 square meter of solar panels can produce between 150 to 400 watts of electricity under optimal conditions. 2. Factors influencing energy.

kilowatt-hours per square meter: The earth at sea level receives about 1,000 Watts per square meter. If the map says 9 kWh/m², then you are getting about 9 full hours of sunlight on the panel. Modern solar panels are around 20% efficient, so that works out to approximately 200 watts per square.

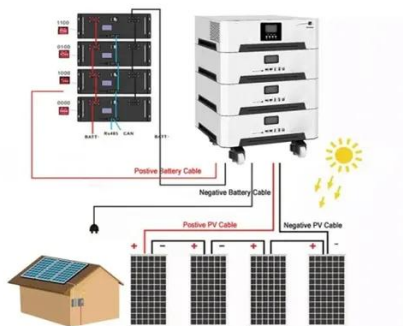
Estimate your solar energy production per m² with accurate calculations for any



location. Free calculator with multiple units, efficiency modes, and detailed visualizations. This calculator provides estimates only and should not be used as the sole basis for solar system purchases or financial.



Power generation per square meter of solar panels in the north



US Solar Insolation Maps

Since the typical modern solar panel is about 19% - 21% efficient, you will get about 1200 watts per square meter of panel. So, if the map says that you live in a "six" area, you can expect sun ...

[Solar Energy Generation Per Square Metre: A...](#)

In this guide, we'll explore how much solar power can be harnessed per square metre, how solar panels work, the factors that ...



[Solar Power Per Square Meter Calculator](#)

Calculate solar panel energy output per square meter. Get accurate daily, monthly, and annual production estimates based on location, panel specs, and system losses.

Solar Panel Output Per Square Meter

Discover how much electricity solar panels generate per square meter, explore efficiency factors, technology comparisons, and ...



[How much solar power can my roof generate?](#)

In a perfect world, the average roof in the U.S. can generate around 21,840 kilowatt-hours (kWh) of solar electricity annually--that's more than most homes need. But ...

PVWatts Calculator

Estimates the energy production and cost of energy of grid-connected photovoltaic (PV) energy systems throughout the world. It allows homeowners, small building owners, installers and ...



[Solar Power per Square Meter Calculator](#)

Power of Panel (Watt Peak): Solar panels are marked with watt peak (Wp), and this is the amount of output the panels should produce in ideal conditions. Your solar panel will ...



[Solar Power per Square Meter Calculator](#)



Power of Panel (Watt Peak): Solar panels are marked with watt peak (Wp), and this is the amount of output the panels should ...



[Solar Energy Generation Per Square Metre: A Complete Guide](#)

In this guide, we'll explore how much solar power can be harnessed per square metre, how solar panels work, the factors that impact their efficiency, and the home solar ...

US Solar Insolation Maps

Since the typical modern solar panel is about 19% - 21% efficient, you will get about 1200 watts per square meter of panel. So, if the map says that you ...



Solar Panel Output Per Square Meter

Discover how much electricity solar panels generate per square meter, explore efficiency factors, technology comparisons, and future innovations in photovoltaic energy.

[How much solar power can my roof generate?](#)



In a perfect world, the average roof in the U.S. can generate around 21,840 kilowatt-hours (kWh) of solar electricity annually--that's ...

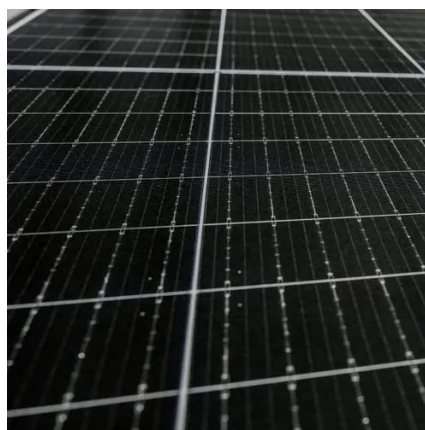


[How much does solar energy generate per square ...](#)

Standard efficiencies for commercial solar panels range from 15% to 22%. This percentage reflects how much sunlight is converted into ...

[How Much Energy Does A Solar Panel Produce?](#)

To cover the average U.S. household's 900 kWh/month consumption, you typically need 12-18 panels. Output depends on sun ...



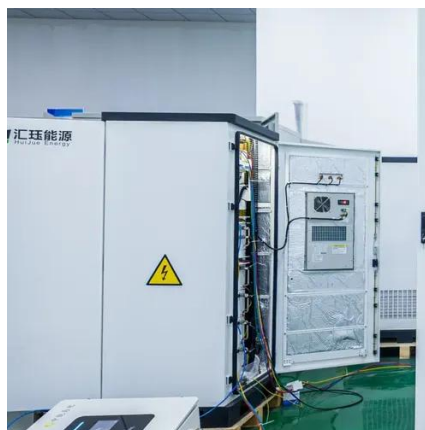
[How Much Energy Does A Solar Panel Produce?](#)

To cover the average U.S. household's 900 kWh/month consumption, you typically need 12-18 panels. Output depends on sun hours, roof direction, panel technology, shading, ...

[How much does solar energy generate per square meter?](#)



Standard efficiencies for commercial solar panels range from 15% to 22%. This percentage reflects how much sunlight is converted into usable electricity. For instance, a ...



[Solar Energy Per Square Meter: How Much Power Can You Get?](#)

This article explores solar energy per square meter and the various factors that influence energy output, such as location, climate, and panel efficiency. It provides crucial ...



Contact Us

For catalog requests, pricing, or partnerships, please visit:

<https://www.asimer.es>

Phone: +34 910 56 87 42

Email: info@asimer.es

Scan the QR code to access our WhatsApp.

