



Praia 5g base station requires distribution box





Overview

What is a 5G base station?

A 5G Base Station is known as a gNode B (next 'generation' Node B). This is in contrast to a 4G Base Station which is known as an eNode B ('evolved' Node B), and a 3G Base Station which is known as a Node B. Figure 21 illustrates two Standalone (SA) Base Station architectures, known as 'option 2' and 'option 5'.

What interfaces do mobile base stations use?

Mobile base stations typically connect to a cell site gateway using RJ45 or SFP Gigabit Ethernet interfaces. However, to accommodate the increased capacity required in modern 4G and coming 5G networks, base stations will also use 10 Gigabit Ethernet SFP+ interfaces.

Can NSA base stations evolve from 4G to 5G?

NSA Base Stations can provide an evolution path from 4G to 5G. Figure 22 illustrates two configurations for Non-Standalone Base Stations using the 4G Core Network. These configurations, known as 'option 3' and 'option 3a', can be deployed before introducing the 5G Core Network.

What is a 5G Brain Center?

Often referred to as the brain center, this includes: Baseband Unit (BBU): Handles baseband signal processing. Remote Radio Unit (RRU): Converts signals to radio frequencies for transmission. Active Antenna Unit (AAU): Integrates RRU and antenna for 5G-era efficiency. 2. Power Supply System



Praia 5g base station requires distribution box

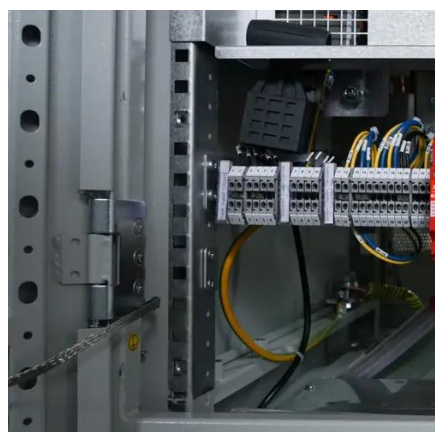


5G Base Station Architecture

Non-Standalone (NSA) Base Stations use Multi-RAT Dual Connectivity (MR-DC) to provide user plane throughput across both the 4G and 5G air interfaces. This requires an ...

[Unveiling the 5G Base Station: The Backbone of...](#)

Yes, 5G base stations are designed to coexist and interoperate with existing 4G infrastructure, enabling a gradual transition from 4G to 5G networks. ...



[5G Base Station-All Products-BROALINK TECHNOLOGY CO., ...](#)

DC Power Distribution Box for RRU BBU (DCDU)
Power Distribution Unit (PDU) PRODUCT CENTER
MPO/MTP FTTx Optic Connection Boxes & Cabinet
Accessories WDM/OTN ...

[Complete Guide to 5G Base Station Construction](#)

Its purpose is to ensure the uninterrupted operation of base station equipment. This system comprises various components such as ...



Distribution box for 5G base station

The utility model discloses a distribution box for a 5G base station, which belongs to the technical field of distribution boxes for 5G base stations and comprises a box body,



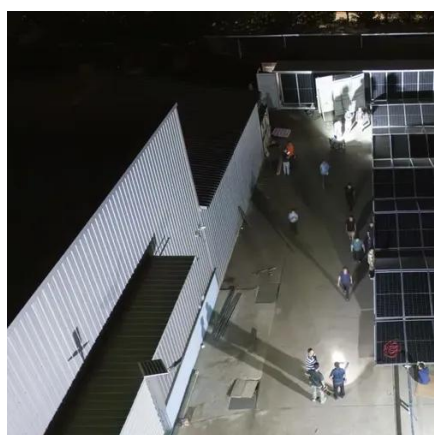
An optimal dispatch strategy for 5G base stations equipped with ...

5G BS and battery swapping cabinets are integrated as a joint dispatch system. Optimal dispatch model is established for cost efficiency and supply-demand balance. Real ...



Fiber Distribution Box Solutions: Optimizing 5G Coverage with

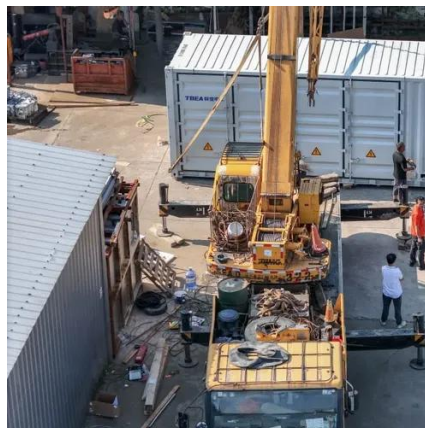
With 5G requiring thousands of small cells and macro base stations, fiber distribution boxes provide the structured framework to manage fiber connections in high ...



Unveiling the 5G Base Station: The Backbone of Next-Gen ...



Yes, 5G base stations are designed to coexist and interoperate with existing 4G infrastructure, enabling a gradual transition from 4G to 5G networks. This allows operators to leverage their ...



[Emerald Cellular Product Range \(4G & 5G LTE\)](#)

Using the latest Software Defined Radio and RF technology, our cellular Base Station products operate in all the common cellular bands from 380MHz-4400MHz, distances over 20km and ...

5G Base Station Architecture

Non-Standalone (NSA) Base Stations use Multi-RAT Dual Connectivity (MR-DC) to provide user plane throughput across both the ...



Complete Guide to 5G Base Station Construction , Key Steps, ...

Its purpose is to ensure the uninterrupted operation of base station equipment. This system comprises various components such as AC distribution boxes, generator switch ...



Edgecore Networks



Mobile base stations typically connect to a cell site gateway using RJ45 or SFP Gigabit Ethernet interfaces. However, to accommodate the increased capacity required in modern 4G and ...



5G Distributed gNB

It forms a complete 5G base station together with the baseband unit (BBU), which is used in mobile communication cell cellular networking scenarios. The platform supports fiber optic ...



Contact Us

For catalog requests, pricing, or partnerships, please visit:

<https://www.asimer.es>

Phone: +34 910 56 87 42

Email: info@asimer.es

Scan the QR code to access our WhatsApp.

