



Replacing a breaker in China in Netherlands





Replacing a breaker in China in Netherlands



DJI Mavic, Air and Mini Drones

Nov 30, 2025 scottjo2152 F Mini 3 Pro - Replacing rear motor without opening a drone factislite Mar 7, 2024 Mini 3 4 Mar 7, 2024

Replacing front leg mini 2 se , DJI Mavic, Air & Mini Drone ...

I'm replacing the left front leg. I can't get the spring loading to work. Leg just flops around. Any help?



[DJI Mini 4 Pro Vision Sensor Calibration After Crash](#)

Just by replacing vision sensors It will not work . Professional calibration by specific tool is required . Contact any drone repair or service in your area I just wait, official ...

[DJI RC battery swap , DJI Mavic, Air & Mini Drone Community](#)

Hi everyone, My DJI RC with the integrated screen, bought with my Mini Pro 3 two years ago, is now showing its age. Even when charged to 100%, it drops to 80% after a few ...

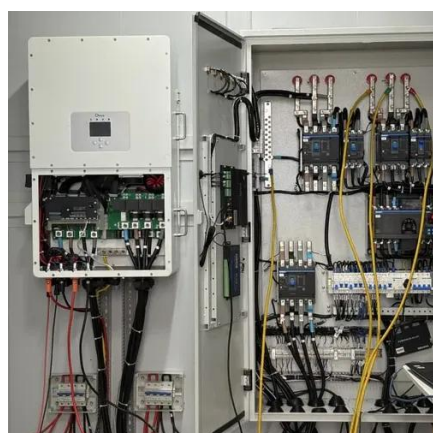


[Gimbal screws and replacing bracket on](#)

I have put back together the entire gimbal already, and I would much rather superglue a plastic piece to the motor than fully disassembling the gimbal again and replacing ...

DJI Mavic, Air and Mini Drones

Repair Service: Replacing the LR arm axis was honestly a relatively easy repair. After replacing the arm, and powering up the gimbal does its vertical and horizontal tests, but ...



Replacing automotive diodes , Electronics Forum (Circuits, ...

You can try replacing it. I'd use a 2A standard diode. The leads and body look too fat for a simple 1N4001 to 1N4007 range. Also, are you sure it's the problem? Is this the switch ...

12v DC adapter repair



My AC to 12vDC adapter was blown and after opened the case I found that the coil was blown to pieces by pieces. Since I don't know what is that coil looks like . Is it possible ...



Definitive Technology Subwoofer repair , Electronics Forum ...

I have a Definitive Technology compact subwoofer that went belly-up and started buzzing constantly instead of producing any sound. After research, I decide to try replacing the ...

RC not connected to mobile device after replacing button board

RC not connected to mobile device after replacing button board Mick P Dec 13, 2024 M





Contact Us

For catalog requests, pricing, or partnerships, please visit:

<https://www.asimer.es>

Phone: +34 910 56 87 42

Email: info@asimer.es

Scan the QR code to access our WhatsApp.

