



Seeding base station communication equipment includes





Overview

Building a 5G base station requires the following categories of equipment: Equipment for wireless signal transmission and reception, typically including RRU, BBU, and antennas.

Building a 5G base station requires the following categories of equipment: Equipment for wireless signal transmission and reception, typically including RRU, BBU, and antennas.

A base transceiver station (BTS) or a baseband unit[1] (BBU) is a piece of equipment that facilitates wireless communication between user equipment (UE) and a network. UEs are devices like mobile phones (handsets), WLL phones, computers with wireless Internet connectivity, or antennas mounted on.

A typical communication base station combines a cabinet and a pole. The cabinet houses critical components like main base station equipment, transmission equipment, power supply systems, and battery banks. Meanwhile, the pole serves as a mounting point for antennas, Remote Radio Units (RRUs), and.

A base station represents an access point for a wireless device to communicate within its coverage area. It usually connects the device to other networks or devices through a dedicated high bandwidth wire of fiber optic connection. Base stations typically have a transceiver, capable of sending and.

In modern telecommunications systems, the base station antenna stands out as an undeniable and crucial component to facilitate our daily communication from voice calls to high-speed data transfers. Base station antennas play a fundamental role in wireless communication systems by enabling the.

A semi-permanent or permanent base station helps to eliminate the types of error that can result from repeated daily setups, and ensures that you always use the GNSS antenna at the exact original location. The requirement for a permanent base station setup increases as more receivers that use the.

Base station equipment, also known as cell site equipment, is a crucial component of cellular networks and wireless communication systems. It plays a central role in facilitating wireless communication between mobile devices and the network



infrastructure. Base stations are responsible for. What is a Base Transceiver Station (BTS)?

A base transceiver station (BTS) or a baseband unit (BBU) is a piece of equipment that facilitates wireless communication between user equipment (UE) and a network. UEs are devices like mobile phones (handsets), WLL phones, computers with wireless Internet connectivity, or antennas mounted on buildings or telecommunication towers.

What is the main base station equipment connection diagram?

The Core Layout: Main Base Station Equipment Connection Diagram The connection diagram provides a clear overview of how the main base station equipment operates within the network. Surrounding this central "brain" are the "Four Guardians" that ensure seamless functionality:.

What is a base station antenna?

Base station antennas are also known as cell site antennas and cellular antennas, and they are typically mounted on a tower or rooftop and connected to a base station through coaxial cables. Base station antennas are available in different shapes and sizes and can be either omnidirectional antennas or directional antennas.

What is a communication base station?

In the vast telecommunications network, communication base stations play a frontline role. Positioned closest to end users, they serve as gateways for processing customer requests and managing data flow. In the words of "Interesting Communication Engineering Drawings," these stations act like "business trackers," always vigilant to:



Seeding base station communication equipment includes



[Radio Base Station Equipment for 5G SA Systems](#)

NTT DOCOMO launched 5G commercial services based on NSA in March 2020, and further launched commercial services based on 5G SA in December 2021, which combines 5GC, a ...

[What Are Base Station Antennas? Complete Guide](#)

This article will provide a thorough outlook on base station antennas from working principles, applications, installation and ...



Mobile base station

Explore STMicroelectronics' mobile base station solutions, enhancing connectivity and performance for telecom networks.

[Common ways to set up a base station](#)

Select a control point for the Base Position (the control point name will be used as the base station name) or select unknown position and enter the ...



[Equipment Needed to Build a 5G Base Station](#)

Equipment for wireless signal transmission and reception, typically including RRU, BBU, and antennas. The RRU performs radio frequency processing and amplification; the ...



Base Stations

The present-day tele-space is incomplete without the base stations as these constitute an important part of the modern-day scheme ...



[What Are Base Station Antennas? Complete Guide](#)

This article will provide a thorough outlook on base station antennas from working principles, applications, installation and maintenance details and everything in between.



Complete Guide to 5G Base Station Construction , Key Steps, Equipment



At the heart of mobile communication networks lies the main base station equipment. Central to this setup are three critical components-- BBU (Baseband Unit), RRU ...



[Radio Base Station Equipment for 5G SA Systems](#)

NTT DOCOMO launched 5G commercial services based on NSA in March 2020, and further launched commercial services based on 5G SA in ...

[LTE Packet Backhaul And Base Station Equipment](#)

Base station equipment includes the hardware installed at cell towers--antennas, radios, and processing units--that communicate with ...



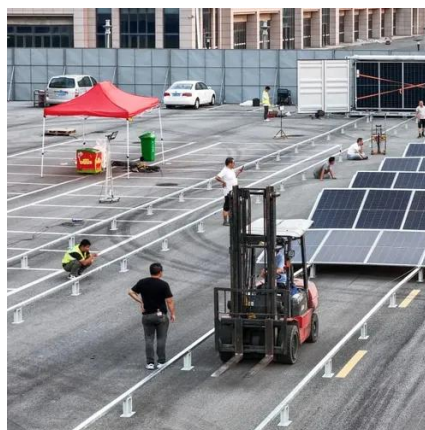
Base Stations

The present-day tele-space is incomplete without the base stations as these constitute an important part of the modern-day scheme of wireless communications. They are ...

[LTE Packet Backhaul And Base Station Equipment in the Real](#)



Base station equipment includes the hardware installed at cell towers--antennas, radios, and processing units--that communicate with user devices and manage data flow. ...



[Common ways to set up a base station](#)

Select a control point for the Base Position (the control point name will be used as the base station name) or select unknown position and enter the Base name. Select the Radio channel ...



Base Station Equipment - SolveForce Fiber Internet, Cloud ...

Base station equipment, also known as cell site equipment, is a crucial component of cellular networks and wireless communication systems. It plays a central role in facilitating wireless ...



[Complete Guide to 5G Base Station Construction](#)

At the heart of mobile communication networks lies the main base station equipment. Central to this setup are three critical ...



Base transceiver station



It may also have equipment for encrypting and decrypting communications, spectrum filtering tools (band pass filters) and so on. Antennas may also be considered as components of BTS ...





Contact Us

For catalog requests, pricing, or partnerships, please visit:

<https://www.asimer.es>

Phone: +34 910 56 87 42

Email: info@asimer.es

Scan the QR code to access our WhatsApp.

