



# Solar container lithium battery pack capacity and rated capacity





## Overview

---

It is the global volume leader among Tier 1 lithium battery suppliers with plant capacity of 77 GWh (year-end 2019 data). Range of MWh: we offer 20, 30 and 40-foot container sizes to provide an energy capacity range of 1.0 - 2.9 MWh per container to meet all levels.

It is the global volume leader among Tier 1 lithium battery suppliers with plant capacity of 77 GWh (year-end 2019 data). Range of MWh: we offer 20, 30 and 40-foot container sizes to provide an energy capacity range of 1.0 - 2.9 MWh per container to meet all levels.

The battery cell adopts the lithium iron phosphate battery for energy storage. At an ambient temperature of 25°C, the charge-discharge rate is 0.5P/0.5P, and the cycle life of the cell (number of cycles)  $\geq$  8000 times. Parameters for 314Ah Cell customized configurations, ease of maintenance, and.

Lithium batteries are CATL brand, whose LFP chemistry packs 1 MWh of energy into a battery volume of 2.88 m<sup>3</sup> weighing 5,960 kg. Our design incorporates safety protection mechanisms to endure extreme environments and rugged deployments. Our system will operate reliably in varying locations from North.

Battery Pack and Cluster; Battery packs are connected by the battery modules, and then assembled in battery clusters; The packs of container energy storage batteries have all undergone strict test inspections for short-circuit, extrusion, drop, overcharge, and over-discharge. Battery Container;

5+MWh capacity optimized for utility scale application, ensuring peak shaving and grid stability. Features 314Ah LFP battery cells, 20ft standard container design, high energy density, and multi-level safety. High corrosion-resistant and compliant with global environmental standards Utilizes.

Adding Containerized Battery Energy Storage System (BESS) to solar, wind, EV charger, and other renewable energy applications can reduce energy costs, minimize carbon footprint, and increase energy efficiency. Get ahead of the energy game with SCU! 50Kwh-2Mwh What is energy storage container?

SCU.



In the field of energy storage, the 2.5MW/5.0MWh Battery Energy Storage System (BESS) solution represents a state-of-the-art integration of technology. Configured to meet project requirements with a 1.25MW/2.5MWh setup, this system utilizes Hoy Power container products. Featuring LFP batteries.



## Solar container lithium battery pack capacity and rated capacity



### [CATL 20Fts 40Fts Containerized Energy Storage System](#)

Individual pricing for large scale projects and wholesale demands is available. Max. Charge/Discharge power. The container system is equipped with 2 HVACs the middle area is ...

### **Battery energy storage system (BESS) container, BESS container ...**

Contact us today to customise a BESS container that meets your exact capacity, safety and compliance goals.



### [Battery energy storage system \(BESS\) container. ...](#)

Contact us today to customise a BESS container that meets your exact capacity, safety and compliance goals.

### [Containerized energy storage . Microgreen.ca](#)

It is the global volume leader among Tier 1 lithium battery suppliers with plant capacity of 77 GWh (year-end 2019 data). Range of MWh: we offer 20, 30 ...



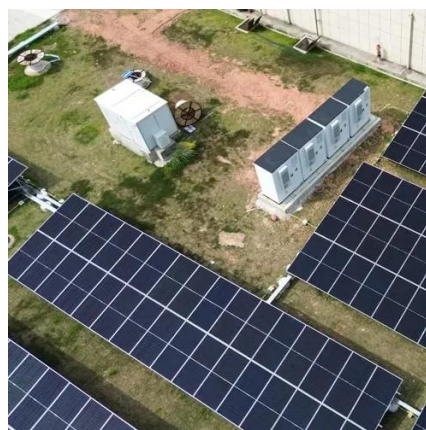
### [CATL 20Fts 40Fts Containerized Energy Storage ...](#)

Individual pricing for large scale projects and wholesale demands is available. Max. Charge/Discharge power. The container system is ...



### **5MWh BESS Container**

5+MWh capacity, optimized for utility scale application, ensuring peak shaving and grid stability. Features 314Ah LFP battery cells, 20ft standard container design, high energy density, and ...



### [20FT Container 250KW 803KWH Battery Energy ...](#)

Equipped with automatic fire detection and alarm systems, the 20FT Container 250kW 860kWh Battery Energy Storage System is the ultimate ...



### **2.5MW/5.0MWh BESS SOLUTION**



In the field of energy storage, the 2.5MW/5.0MWh Battery Energy Storage System (BESS) solution represents a state-of-the-art integration of ...



### [Energy storage container, BESS container](#)

Adding Containerized Battery Energy Storage System (BESS) to solar, wind, EV charger, and other renewable energy applications can reduce energy costs, minimize carbon footprint, and ...

### **2MW Lithium ion BESS Container**

The battery energy storage system container has a long cycle life of over 6000 to 8000 times, with large capacity lithium-ion phosphate battery cells in battery packs, connections in clusters, and ...



### **2.5MW/5.0MWh BESS SOLUTION**

In the field of energy storage, the 2.5MW/5.0MWh Battery Energy Storage System (BESS) solution represents a state-of-the-art integration of technology. Configured to meet project ...

### [20FT Container 250KW 803KWH Battery Energy Storage System](#)



Equipped with automatic fire detection and alarm systems, the 20FT Container 250kW 860kWh Battery Energy Storage System is the ultimate choice for secure, scalable, and efficient energy ...



### [BESS Container Sizes: How to Choose the Right ...](#)

In this guide, we'll explore standard container sizes, key decision factors, performance considerations, and how to select the best ...

### [Containerized energy storage , Microgreen.ca](#)

It is the global volume leader among Tier 1 lithium battery suppliers with plant capacity of 77 GWh (year-end 2019 data). Range of MWh: we offer 20, 30 and 40-foot container sizes to provide ...



### [Specification of 5MWh Battery Container System](#)

The battery cell adopts the lithium iron phosphate battery for energy storage. At an ambient temperature of 25°C, the charge-discharge rate is 0.5P/0.5P, and the cycle life of the cell ...

### [BESS Container Sizes: How to Choose the Right Capacity](#)



In this guide, we'll explore standard container sizes, key decision factors, performance considerations, and how to select the best size for your application. When ...





## Contact Us

---

For catalog requests, pricing, or partnerships, please visit:

<https://www.asimer.es>

Phone: +34 910 56 87 42

Email: [info@asimer.es](mailto:info@asimer.es)

Scan the QR code to access our WhatsApp.

