



Solar panel size model





Overview

This guide explores the standard sizes of solar panels, factors influencing their dimensions, and how to choose the right size for a home solar installation. Solar panels are available in several standard sizes, with the most common being 60-cell and 72-cell configurations.

This guide explores the standard sizes of solar panels, factors influencing their dimensions, and how to choose the right size for a home solar installation. Solar panels are available in several standard sizes, with the most common being 60-cell and 72-cell configurations.

The size of solar panels with the same cell count varies slightly, depending on the brand and model. Still, most 60-cell solar panels have a size of 39" X 66" and most 72-cell solar panels have sizes of around 39" X 77". However, panels with cell counts of 96, 120, and 144 may have different sizes.

In this comprehensive guide, you'll learn everything you need to know about solar panel sizing, from standard dimensions to weight considerations, helping you determine the perfect solar solution for your home in 2025. When discussing solar panels, the term "size" can be confusing because it refers.

The size of solar panels varies depending on the number of photovoltaic (PV) cells they include. Each cell adds to the panel's total voltage and power output. The most commonly used cell layouts are 60-cell, 72-cell, and 96-cell panels. Let's consider their main features and purpose: 60-cell solar.

Choosing the right solar panel size can feel like a puzzle, as it is a key part of how solar energy works. Roof shapes, power goals, and budget lines all shift the pieces. Yet a few clear numbers turn that puzzle into a simple plan. This guide puts those numbers front and center, from the standard.

This guide will help you select the right solar panel size through detailed calculations. **What Will Affect Solar Panel Size?**

How To Choose The Right Solar Panel Size?

How To Calculate Solar Panel Size?

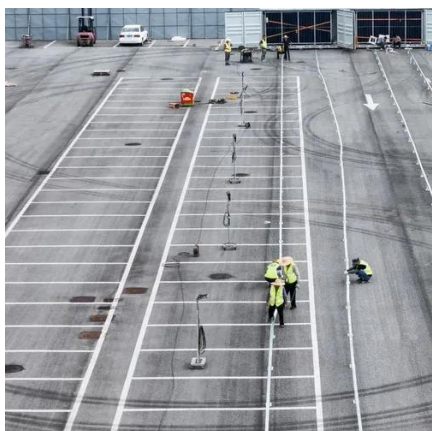


Commercial solar panels are designed for large-scale energy production for factories, solar.

Standard residential solar panels are typically around 5.8 feet long by 3.5 feet wide and weigh between 40 to 50 pounds. However, the exact dimensions depend heavily on the panel's technology, wattage, and the manufacturer's design. Understanding these specifications is crucial for determining roof.



Solar panel size model



The Ultimate Guide to Solar Panel Size, Weight & Wattage (2025)

Standard residential solar panels are typically around 5.8 feet long by 3.5 feet wide and weigh between 40 to 50 pounds. However, the exact dimensions depend heavily on the ...

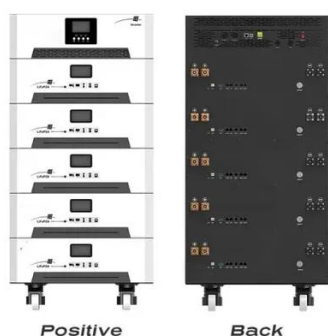
[Perfect Solar Panel Sizes for Your Home \(Expert Sizing Guide\)](#)

Solar panels have become the cornerstone of residential clean energy, with standard sizes designed to balance power output and installation practicality. Most residential ...



[Solar Panel Size: 2026 Detailed Guide](#)

In this article, we will discuss all the important aspects of solar panel size. This guide will help you select the right solar panel size through detailed calculations.



[The Ultimate Guide to Solar Panel Dimensions and Sizes](#)

In this guide, we covered everything about solar panel dimensions and sizes, including different types of panels, their wattage, typical measurements, and how to choose ...



[Detailed Guide to Solar Panel Size & Dimensions](#)

Choosing the proper system is not only about the solar panel dimensions. You should also consider wattage, number of cells, layout ...

[The Ultimate Solar Panel Size Guide for Every Homeowner](#)

Throughout this guide, simple rules of thumb will help you determine how to size a solar panel system, and will answer the frequently asked question: What size solar panel do I ...



[Detailed Guide to Solar Panel Size & Dimensions](#)

Choosing the proper system is not only about the solar panel dimensions. You should also consider wattage, number of cells, layout possibilities, and energy consumption. ...



[Solar Panel Size & Dimensions Guide 2025 . Complete Specs](#)



Complete guide to solar panel sizes and dimensions. Compare 60-cell vs 72-cell panels, weights, roof space requirements, and installation specs for 2025.



Complete Guide to Solar Panel Size

Instead, you'll see it's listed as the number of solar cells within a panel, with the most common solar panel sizes being 60-cell and 72-cell. Let's take a closer look at the difference between ...

[The Ultimate Guide to Solar Panel Size, Weight](#)

Standard residential solar panels are typically around 5.8 feet long by 3.5 feet wide and weigh between 40 to 50 pounds. However, the ...



[What Are the Common Solar Panel Sizes?](#)

Our guide on solar panel sizes covers standard dimensions, along with their power output and ideal applications.

[Solar Panel Size Guide , Best Panel Size for Your ...](#)



Learn how to choose the ideal solar panel size for your home. Get expert tips, standard dimensions, and a size chart to simplify your ...



[Solar Panel Size Guide , Best Panel Size for Your Roof](#)

Learn how to choose the ideal solar panel size for your home. Get expert tips, standard dimensions, and a size chart to simplify your solar decisions.



Contact Us

For catalog requests, pricing, or partnerships, please visit:

<https://www.asimer.es>

Phone: +34 910 56 87 42

Email: info@asimer.es

Scan the QR code to access our WhatsApp.

