



# Substation becomes 5G base station





## Substation becomes 5G base station



### [Understanding Electrical Substations](#)

What is a substation? A substation is a key component of an electrical network that facilitates the transformation of voltage levels, switching of electrical circuits, and distribution of ...

### [Electrical Substation: Types & Components](#)

A substation is defined as a network of switching equipment, control equipment, and transformers used to convert the voltage to a different level and eventually route it to the user.



### **Substation**

A substation is a part of an electrical generation, transmission, and distribution system. Substations transform voltage from high to low, or the reverse, or perform any of several other ...



### **What is a Substation?**

Substations act as bridges between various parts of the grid--between generation and transmission, transmission and distribution, and sometimes between different ...



CE UN38.3 MSDS

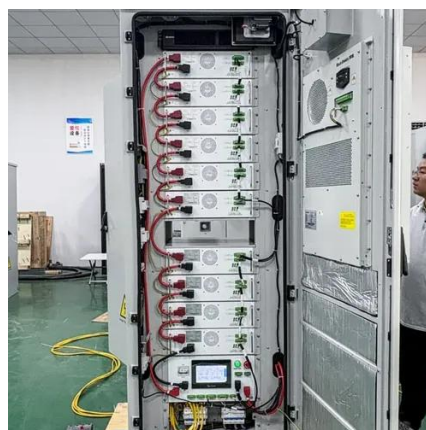


### [What is a substation? , National Grid](#)

Substations are integral features within that grid and enable electricity to be transmitted at different voltages, securely and reliably. How does an electricity substation work? One of the ...

### [What Is an Electrical Substation? Complete Guide](#)

Learn how an electrical substation transforms high-voltage transmission into safe, usable power, and explore its key components, safety protocols, and smart-grid integration.



### **The basic things about substations you MUST know in the middle ...**

In a less simple way, substation is the key part of electrical generation, transmission, and distribution systems. Substation transforms voltage from high to low or from low to high as ...

### [Substation: What It Is and How It Works?](#)



Get complete details about substation functions, components, and how they transform voltage to ensure safe, efficient, and reliable power distribution.



### [Complete Guide to Electrical Substations](#)

In simple words, an electrical substation is a facility where voltage is either stepped up or stepped down to make sure we can transmit electricity across long distances with safe ...

### **Electrical substation**

Electrical substations are the interface between parts of the distribution grid and transmission systems. These fenced off areas (see Figures 1 and 2) step down the voltage in the ...





## Contact Us

---

For catalog requests, pricing, or partnerships, please visit:

<https://www.asimer.es>

Phone: +34 910 56 87 42

Email: [info@asimer.es](mailto:info@asimer.es)

Scan the QR code to access our WhatsApp.

