



The board responsible for power supply in the sdr base station





Overview

The power distribution board is responsible for providing a regulated power supply to various boards (Tx, Rx, digital board). Digital boards have digital electronics including an FPGA and hard processor system (HPS), general purpose processor (GPU) and outputs to SFP+ ports.

The power distribution board is responsible for providing a regulated power supply to various boards (Tx, Rx, digital board). Digital boards have digital electronics including an FPGA and hard processor system (HPS), general purpose processor (GPU) and outputs to SFP+ ports.

Fundamental components of an SDR are found on the following five modular circuit boards: Transmit Board (Tx chain), Receive Board (Rx chain), Power Distribution Board, Digital Board, and Time Board. The Tx chain consists of components such as digital-to-analog converters (DACs), anti-imaging.

It describes the structure of base station systems with a convergent top-down and bottom-up framework. The BSWG has now moved beyond detailed consideration of these specific contributions. As they represent a valuable structuring of information relevant to base stations, they are presented here as.

The ZXSDR BS8800 adopting +24V DC power supply contains an extra 1-U PSU subrack and a different power distribution subrack. Its appearance diagram is omitted here. Page 10 Provides outgoing RS232/RS485 monitor communication interface Monitor- Supports over/under voltage alarm of input power.

The document describes ZTE's ZXSDR base station technology. It provides an overview of ZTE's SDR base station family and introduces the key components. The base station uses a modular design with separated baseband and radio units connected via the Common Public Radio Interface standard. The.

The mainboard carries the RFSoc module and includes all digital and analogue interfaces. The RF-Control board is a separate PCB for configuration and control of the RF frontend modules (MTR). All components are described in more detail below. The mainboard serves as carrier for accommodating the.

The modem subsystem passes the resulting analog signal or digital bitstream



bearing information onto the link/network layer processing or security processing subsystem, as appropriate. This process is reversed on the transmit side, with the modem receiving an analog signal or digital bitstream.



The board responsible for power supply in the sdr base station

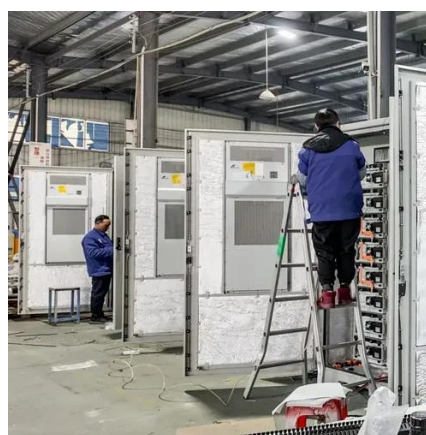


SDR Architectures dd

The baseband processing engine in this model may be provided through a combination of technologies such as an ASSP, FPGA, or DSP, or may be provided through a software ...

Important Parameters for SDR Systems

The power distribution board is responsible for providing a regulated power supply to various boards (Tx, Rx, digital board). Digital ...



WR_1_ZXSDR_Base_Station_Structur.ppt

It provides an overview of ZTE's SDR base station family and introduces the key components. The base station uses a modular design with separated baseband and radio units connected ...

DS-6250

With Multicarrier and SDR technologies, one base station is expandable to 8 carriers and all frequencies and carrier capacity can be customized. What's more, it adopts innovative eco ...



SDR6001 Data Sheet

The RF Control Board is used to control and supply power to the MTR modules or external RF front ends. The dynamic control of the RF frontends, i.e. the setting of control parameters in ...



DS-6250

With Multicarrier and SDR technologies, one base station is expandable to 8 carriers and all frequencies and carrier capacity can be customized. ...



SDR Base Station Training Guide , PDF , Software Defined Radio ...

It discusses the basic concepts and structure of SDR, including distributed BBU and RRU architecture. It also introduces the hardware components of SDR base stations such as the ...



48V 100Ah

[What Is a Base Station PCB? A Complete Guide for 2025](#)



In 2025, base station PCBs are more vital than ever. With the expansion of 5G networks and the early development of 6G, telecom infrastructure depends heavily on highly ...



[The Barrett 4050 HF Software-Defined Radio \(SDR\) Base ...](#)

For more detailed information and specifications, please refer to the Barrett 4050 HF SDR Brochure. Sources



[Important Parameters for SDR Systems](#)

The power distribution board is responsible for providing a regulated power supply to various boards (Tx, Rx, digital board). Digital boards have digital electronics including an ...



[ZTE ZXSDR BS8800 TECHNICAL MANUAL Pdf ...](#)

The ZXSDR BS8800 adopting +24V DC power supply contains an extra 1-U PSU subrack and a different power distribution subrack. Its appearance ...

Base Station System Structure



It describes the structure of base station systems with a convergent top-down and bottom-up framework. The BSWG has now moved beyond detailed consideration of these specific ...



[ZTE ZXSDR BS8800 TECHNICAL MANUAL Pdf Download , ManualsLib](#)

The ZXSDR BS8800 adopting +24V DC power supply contains an extra 1-U PSU subrack and a different power distribution subrack. Its appearance diagram is omitted here.



Contact Us

For catalog requests, pricing, or partnerships, please visit:

<https://www.asimer.es>

Phone: +34 910 56 87 42

Email: info@asimer.es

Scan the QR code to access our WhatsApp.

