



# The function of the base station power control host computer





## Overview

---

The host computer communicates with the BMS in a two-way manner through a standard communication protocol (such as CAN bus, RS485, UART or Ethernet) to obtain the operating data of the battery pack, including key parameters such as voltage, current, temperature, SOC (state of).

The host computer communicates with the BMS in a two-way manner through a standard communication protocol (such as CAN bus, RS485, UART or Ethernet) to obtain the operating data of the battery pack, including key parameters such as voltage, current, temperature, SOC (state of).

The BSC manages the radio resources for one or more BTSs. It handles radio channel setup, frequency hopping, and handovers. The BSC is the connection between the mobile and the MSC. The BSC also translates the 13 Kbps voice channel used over the radio link to the standard 64 Kbps channel used by.

The BSC is a vital part of the network infrastructure that supports wireless communication by connecting and managing multiple base stations within the mobile network. Acting as a middleman, the BSC manages the radio resources and power levels between your mobile phone and the larger network. As.

The idea of base stations is anchored in their function to provide coverage, capacity, and connectivity, hence allowing for extending the working capabilities of mobile phones and other radio gear. What is Base Station?

What is Base Station?

A base station represents an access point for a wireless.

The Base Station Controller (BSC) is a critical component in a GSM (Global System for Mobile Communications) network. It plays a central role in managing multiple Base Transceiver Stations (BTSs) and ensuring the efficient operation of the radio access network. Here's a technical explanation of the.

The host computer, the slave computer and the BMS are interconnected in the lithium battery management system (BMS) to form a complete management, monitoring and control architecture. They ensure the safe, reliable and efficient



operation of the battery system through their respective role division.

A Base Station Controller (BSC) is a network component in a cellular network that is responsible for controlling one or more base transceiver stations (BTSs). The BSC is responsible for managing the radio resources of the cell, including frequency allocation, handovers, and power control. It is.



## The function of the base station power control host computer

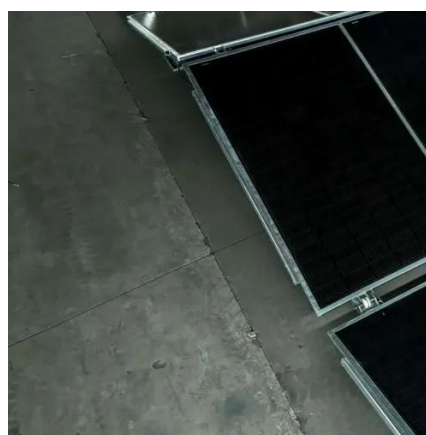


### Base Stations

Control Unit: The controller is in charge of the operation of the whole base station. It controls the transmission power, frequency ...

### GSM

It controls the power transmission of the BSS and MS in its area. The function of the BSC is to allocate the necessary time slots between the BTS and the MSC. It is a switching device that ...



### Base Stations

Control Unit: The controller is in charge of the operation of the whole base station. It controls the transmission power, frequency allocation, handovers between different cells and ...



### The meaning and function of the host computer, the slave ...

Host computer to BMS: The host computer sends operation instructions to BMS according to the operating status of the battery or the operator's instructions, such as adjusting the charging ...



### Base Station Controller

Functionally, an RSS consists of a control function performed by the base station controller (BSC) and a transmitting/receiving function carried out by the base station transceiver (BTS) system.

### [Base Station Controller: 5 Key Insights You Need to Know](#)

In addition to call management, the base station controller also takes into account the signal quality, adjusting power levels and frequency handovers dynamically.



### Base Station Controller (BSC)

A Base Station Controller (BSC) is a network component in a cellular network that is responsible for controlling one or more base transceiver stations (BTSs). The BSC is responsible for ...

### [Base Station Controller: Key Role in Mobile Networks](#)



As an intermediary, the BSC is crucial in managing BTSs. It controls radio frequencies and assigns radio channels. Plus, it tweaks power levels to improve signal quality ...



### **BSC (base station controller)**

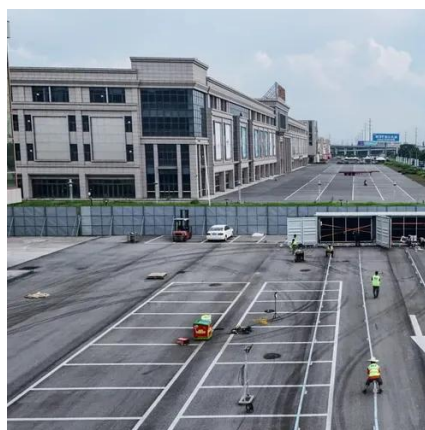
In cellular telecommunications, a Base Station Controller (BSC) is a critical component of a GSM (Global System for Mobile Communications) network, which serves as ...



48V 100Ah

### [Explain the role of a Base Station Controller \(BSC\) in GSM.](#)

Here's a technical explanation of the role of a BSC in GSM: 1. Radio Resource Management: The BSC is responsible for the allocation and management of radio resources. ...



### **The meaning and function of the host computer, the slave computer ...**

Host computer to BMS: The host computer sends operation instructions to BMS according to the operating status of the battery or the operator's instructions, such as adjusting the charging ...

## **What is Base Station Controller? A Simple Guide for Everyone**



Power control is another key function, as the BSC adjusts signal strength to maintain optimal quality without wasting energy or causing unnecessary interference.





## Contact Us

---

For catalog requests, pricing, or partnerships, please visit:

<https://www.asimer.es>

Phone: +34 910 56 87 42

Email: [info@asimer.es](mailto:info@asimer.es)

Scan the QR code to access our WhatsApp.

