



The solar container communication station loses power and has no signal source





Overview

The backup system is installed but the backup configuration is disabled. Enable backup via the SetApp mobile app (Commissioning -> Power Control -> Energy Manager -> Backup Configuration -> Backup -> Enable). Turn off the supply to the loads (switch to off-grid) and verify backup.

The backup system is installed but the backup configuration is disabled. Enable backup via the SetApp mobile app (Commissioning -> Power Control -> Energy Manager -> Backup Configuration -> Backup -> Enable). Turn off the supply to the loads (switch to off-grid) and verify backup.

The Enphase IQ Gateway (previously known as the Envoy) is the communication hub for an Enphase solar system, linking the microinverters with the monitoring platform. When the gateway loses power, you effectively lose visibility into your solar energy production, which can be a significant problem.

The best way to avoid system failures is to install a high-quality, properly designed PV system. A regular maintenance program helps eliminate system failures. The most common system failures are usually the easiest to fix. Check the system first for basic problems to save a lot of time. The most.

The Troubleshooting Alerts table provides you with Alert Names, Alert Descriptions, and Alert Troubleshooting Solutions. These alerts are designed to help identify and resolve issues in your system. They are for residential and commercial systems and cover all SolarEdge devices. For further.

As there can be many reasons for a “no signal” notification, you should first check your power source and ethernet cable. If they are functioning properly, the next step is to turn off the power of your modem, internet connection, and Solar Gateway for 30 seconds, then turn them back on in order.

An inverter is one of the most important pieces of equipment in a solar energy system. It's a device that converts direct current (DC) electricity, which is what a solar panel generates, to alternating current (AC) electricity, which the electrical grid uses. In DC, electricity is maintained at.

What you're building: A weatherproof, solar-powered Meshtastic relay node based



on the Wio Tracker 1110 that can run off-grid for months or years with minimal maintenance. Core ingredients: Wio Tracker 1110, 7W solar panel, Li-ion/LiPo battery, weatherproof enclosure, collinear antenna, bulkhead. Why is my PV array not working?

If the input side voltage and current from the PV system array are operating at a reduced level, the problem is most likely with an array string or with a specific module. This means you'll need to go to the array location next. In a grid-tied PV system, the AC output from the inverter fluctuates with the amount of sun.

What should I do if a module is not producing power?

Once you find the module or array string that is not producing power, check all wiring, diodes, fuses, or circuit breakers, and replace any defective items. If necessary, replace the defective module or modules. Remember that a lightning strike or power surge may have occurred, and you may have to replace or reset a surge protection device.

Why are my PV array sections supplying different amounts of current?

PV array sections are supplying different amounts of current to each charge controller. Check the array section outputs and adjust for any differences. Consider that this could be a normal operating condition if the array sections are located in different locations and/or point in different directions.

Why can't I connect my SolarEdge to the grid?

Cannot reconnect to grid due to grid relay sensor error. No electrical power to the house. In case of a power outage there won't be backup power. To bypass the issue, manually switch the Backup Interface to on-grid according to the installation manual. Open a SolarEdge support case. 7. Cannot reconnect to the grid due to a grid relay sensor error.



The solar container communication station loses power and has no signal



[Troubleshooting Tesla Solar "No Signal" Problems](#)

Getting a "no signal" alert on your Gateway is not fun, but no worries because it is generally an easy fix, like checking your ethernet port or cable, your power source, or the proximity of your ...

PV Problem Troubleshooting: Arrays, Batteries, Inverters & More

Once you find the module or array string that is not producing power, check all wiring, diodes, fuses, or circuit breakers, and replace any defective items. If necessary, ...



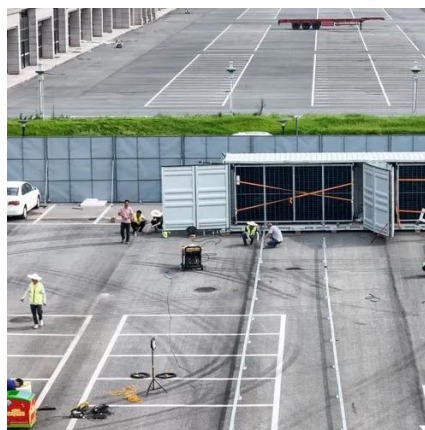
Can I run power to a shipping container? Off-Grid Solar Solutions ...

In short, you can indeed run power to a container - either by extending a line from the grid or by turning the container itself into a mini power station using solar panels.



[Shipping Container Solar Systems in Remote ...](#)

Shipping container solar systems are transforming the way remote projects are powered. These innovative setups offer a ...



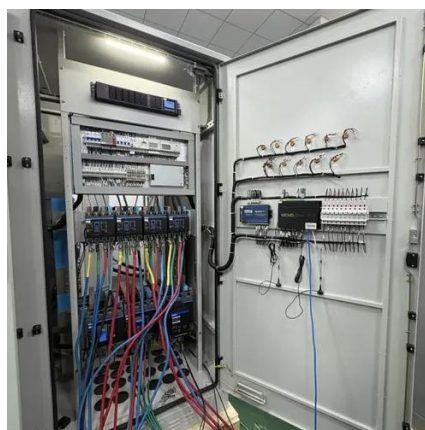
[Shipping Container Solar Systems in Remote Locations: An ...](#)

Shipping container solar systems are transforming the way remote projects are powered. These innovative setups offer a sustainable, cost-effective solution for locations ...



[Can I run power to a shipping container? Off-Grid ...](#)

In short, you can indeed run power to a container - either by extending a line from the grid or by turning the container itself into a mini ...



[Solar Integration: Inverters and Grid Services Basics](#)

If they are out of sync, some of the power flowing through the circuit cannot be absorbed by connected devices, resulting in a loss of efficiency. More total power will be needed to create ...



Solar container communication station inverter grid-connected signal



Are grid-connected inverters a viable alternative to fossil-fuel-based power plants? Unlike conventional fossil-fuel-based power plants, RESs generate power that depends heavily on ...



[PV Problem Troubleshooting: Arrays, Batteries, ...](#)

Once you find the module or array string that is not producing power, check all wiring, diodes, fuses, or circuit breakers, and replace any ...



Solar container communication station inverter grid-connected ...

Are grid-connected inverters a viable alternative to fossil-fuel-based power plants? Unlike conventional fossil-fuel-based power plants, RESs generate power that depends heavily on ...



[Troubleshooting Alerts in the Monitoring Platform](#)

Confirm the AC SPD board is installed correctly as instructed in this manual. If the issue persists, the AC SPD may have absorbed an electrical surge and the board needs to be replaced. 2. ...



How to Build a Solar-Powered Meshtastic Node: The Ultimate Off ...



Looking for a reliable way to stay connected when traditional networks fail? A solar-powered Meshtastic node might be exactly what you need. This DIY project combines sustainable ...



[Troubleshooting Tesla Solar "No Signal" Problems](#)

Getting a "no signal" alert on your Gateway is not fun, but no worries because it is generally an easy fix, like checking your ethernet port or ...

[Enphase IQ Combiner Has No Power - A Service Call for a ...](#)

Recently, I was called out to a service call for a customer who reported that their Enphase IQ Gateway had lost power. This type of issue can be concerning for solar system ...



Wi-Fi On-Site Troubleshooting Guide

There are several different troubleshooting steps you can perform on site which can help you identify the cause of any potential communication issues. This can occur when there is a ...

[Solar Integration: Inverters and Grid Services Basics](#)



If they are out of sync, some of the power flowing through the circuit cannot be absorbed by connected devices, resulting in a loss of efficiency.
More ...





Contact Us

For catalog requests, pricing, or partnerships, please visit:

<https://www.asimer.es>

Phone: +34 910 56 87 42

Email: info@asimer.es

Scan the QR code to access our WhatsApp.

