



The solar inverter stops working at night





Overview

No, solar inverters don't work at night. They rely on sunlight to convert DC power into AC power. At night, your system will use stored energy from the battery or the grid. Solar inverters are crucial for converting DC electricity into usable AC power for your home.

No, solar inverters don't work at night. They rely on sunlight to convert DC power into AC power. At night, your system will use stored energy from the battery or the grid. Solar inverters are crucial for converting DC electricity into usable AC power for your home.

No, solar inverters don't work at night. They rely on sunlight to convert DC power into AC power. At night, your system will use stored energy from the battery or the grid. Solar inverters are crucial for converting DC electricity into usable AC power for your home. A solar inverter doesn't.

On-grid solar inverters do indeed turn off at night when there is no sunlight to convert into electricity. During the day, solar panels absorb the sunlight and, after that, convert it into direct current (DC) electricity. The solar inverter then converts this DC electricity into alternating current.

Solar inverters don't exactly "shut down" during nighttime; instead, their operational status varies based on factors like energy production, grid connectivity, and system design. During daylight hours, solar panels generate electricity from sunlight, supplying power to the inverter for conversion.

When it comes to solar energy, one of the biggest questions that pops up is, "Will the solar inverter stop working at night?"

"It's a valid concern for homeowners looking to optimize their solar inverter efficiency. In this article, we'll dive into how solar inverters operate after the sun goes.

At night, the solar panels lose sunlight and can no longer generate enough DC power, causing the voltage to drop rapidly below the startup threshold. The solar inverter detects this change through its voltage detection module. To avoid unnecessary energy consumption and ensure equipment safety, it.



The absence of sunlight isn't the only factor that impacts solar inverter performance at night. Other influences may include temperature drops and the utilisation of any stored energy reserves in linked battery systems, affecting the overall energy availability during nighttime hours. Solar.



The solar inverter stops working at night



[Does a Solar Inverter Work at Night? Here's the Real Answer](#)

No, solar inverters don't work at night. They rely on sunlight to convert DC power into AC power. At night, your system will use stored energy from the battery or the grid. Solar ...

[Solar inverter turn off at night + reasons](#)

Many of the people who choose to use solar energy systems have whether solar inverter turn off at night or, in other words, solar inverters shut down at night. The short answer ...



[What Happens to Solar Inverters at Night? Do ...](#)

Do Solar Inverters Shut Down at Night? Solar inverters don't exactly "shut down" during nighttime; instead, their operational status ...

Does a Solar Inverter Work at Night? How to Power My Home 24/7?

In a hybrid solar system, the batteries store the extra power left over from the daytime generation. The inverter will still work at night and continue to convert the DC power in ...



[Do Solar Inverters Turn Off At Night?](#)

While solar inverters do not work at night due to the absence of sunlight, they react to the drop in power input and enter standby or sleep mode to ...



Autarco solar inverters at night

On-grid solar inverters do indeed turn off at night when there is no sunlight to convert into electricity. During the day, solar panels absorb the sunlight and, after that, convert it into direct ...



[Solar inverter turn off at night + reasons](#)

Many of the people who choose to use solar energy systems have whether solar inverter turn off at night or, in other words, solar ...



[Does the Solar Inverter Turn Off at Night?](#)



This article explains whether solar inverter will turn off at night, why inverter automatically enter standby or shut off mode at night due to insufficient solar voltage, and how ...

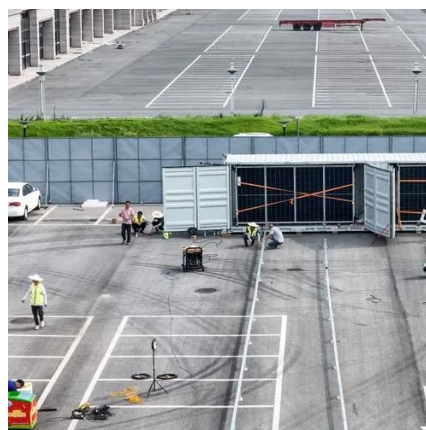


[Will the Solar Inverter Automatically Stop Working ...](#)

Explore how solar inverters operate at night and discover the best solar inverter for home use to maximize your solar energy efficiency.

[Do Solar Inverters Turn Off At Night?](#)

While solar inverters do not work at night due to the absence of sunlight, they react to the drop in power input and enter standby or sleep mode to conserve energy.



[Does Solar Inverter Work at Night? Unveiling the Facts and](#)

No, a solar inverter does not work at night. This is because solar inverters require sunlight to produce energy, so ...



[Do Solar Inverters Shut Down At Night](#)



Solar panels absorb sunlight and convert it into direct current during the day. However, solar inverters do not shut down at night, as they can continue to operate in a mode ...



Will the Solar Inverter Automatically Stop Working at Night?

Explore how solar inverters operate at night and discover the best solar inverter for home use to maximize your solar energy efficiency.

What Happens to Solar Inverters at Night? Do They Shut Down?

Do Solar Inverters Shut Down at Night? Solar inverters don't exactly "shut down" during nighttime; instead, their operational status varies based on factors like energy ...



[Does Solar Inverter Work at Night? Unveiling the Facts and](#)

No, a solar inverter does not work at night. This is because solar inverters require sunlight to produce energy, so when the sun goes down, they stop producing electricity.

[Does a Solar Inverter Work at Night? Here's the ...](#)



No, solar inverters don't work at night. They rely on sunlight to convert DC power into AC power. At night, your system will use stored ...





Contact Us

For catalog requests, pricing, or partnerships, please visit:

<https://www.asimer.es>

Phone: +34 910 56 87 42

Email: info@asimer.es

Scan the QR code to access our WhatsApp.

