



Three-phase energy storage container for wastewater treatment plants





Overview

chapter offers procurement information for projects that include an energy storage component. The material provides guidance for different ownership models including lease, Power Purchase Agreement (PPA), or Owner Build and Operated (OBO).

chapter offers procurement information for projects that include an energy storage component. The material provides guidance for different ownership models including lease, Power Purchase Agreement (PPA), or Owner Build and Operated (OBO).

The Procurement Team seeks qualified Proposers, to perform under a guaranteed energy savings contract (“Contract”) between PEA and Selected Proposer under the Pennsylvania Guaranteed Energy Savings Act (“GESA”). GESA addresses contracting by governmental entities for energy conservation measures in.

chapter offers procurement information for projects that include an energy storage component. The material provides guidance for different ownership models including lease, Power Purchase Agreement (PPA), or Owner Build and Operated (OBO). It also includes contracting strategies for OBO projects.

The Wastewater Energy Management Toolkit is a collection of resources that enables water resource recovery facilities to learn and benefit from the work of DOE's Better Buildings Sustainable Wastewater Infrastructure of the Future (SWIFT) Accelerator. Toolkit resources support best practices and.

For decades, Congress has authorized, modified, and funded federal programs to help communities address water supply and water infrastructure needs. Departments and agencies that administer these assistance programs include the Bureau of Reclamation (Reclamation), the U.S. Army Corps of Engineers.

Description: The Drinking Water State Revolving Fund (DWSRF) provides below-market rate loans to fund infrastructure improvements to water systems to protect public health and ensure compliance with the Safe Drinking Water Act. These projects may include the installation, upgrade, and replacement.

This fact sheet provides information on an effective energy management plan for



wastewater treatment facilities, including tracking, evaluating and upgrading to automated processes for operations and maintenance. Discover. Connect. Ask. Follow. This fact sheet provides information on effective. Is a wastewater treatment plant sustainable?

The Foundation for Applied Water Research, an organization affiliated with the Dutch Water Authorities, suggests that the wastewater treatment plant functions as a trinity of nutrient recovery, energy generation and reclaimed water within the framework of a sustainable concept 2.

What is the water storage capacity of a project?

51. The water storage capacity of a project under the program is to be not less than 2,000 acre-feet and not more than 30,000 acre-feet.

What is a wastewater treatment plant (WWTP)?

Wastewater treatment plants (WWTPs) are undergoing a paradigm shift from the efficient removal of pollutants to the recovery of substances and energy from wastewater.

When did Congress authorize a water supply project?

Since 1980, Congress has individually authorized construction of several "rural water supply" projects that have also served these purposes. Further, since 1992 Congress has also authorized nonfederal participation in reclamation wastewater and reuse/recycling projects.



Three-phase energy storage container for wastewater treatment plant



EPA State Revolving Funds and Grants Available to Water and Wastewater

EPA allocates grant funding through two State Revolving Funds (SRFs). Administered by the states, the SRFs have the potential to support mitigation or post-disaster ...

[REQUEST FOR PROPOSALS FOR LONG-TERM...](#)

Purpose of the Request for Proposal . 1. 1.1.1.
Coordination of Solicitation with Other States 2.
1.2. The Framework ...



EPA State Revolving Funds and Grants Available to Water and ...

EPA allocates grant funding through two State Revolving Funds (SRFs). Administered by the states, the SRFs have the potential to support mitigation or post-disaster ...

[Federally Supported Projects and Programs for ...](#)

Introduction This report provides background and funding information on water infrastructure projects, including those involving wastewater and ...



Energy Storage

The Division advances research to identify safe, low-cost, and earth-abundant elements for cost-effective long-duration energy storage. OE's development of innovative tools improves storage ...



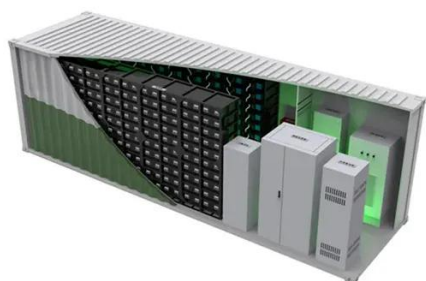
PHILADELPHIA ENERGY AUTHORITY, CITY OF ...

The Procurement Team is requesting proposals for these facilities that will comprehensively implement plant equipment/operations improvements and energy conservation measures to ...



Energy Storage

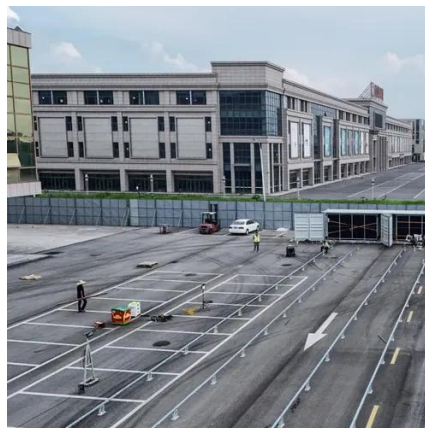
The Division advances research to identify safe, low-cost, and earth-abundant elements for cost-effective long-duration energy storage. OE's ...



Wastewater Energy Management Toolkit , Better Buildings & Better Plants



Toolkit resources support best practices and innovative approaches successfully used by wastewater facilities to establish and implement energy management and planning.



Federally Supported Projects and Programs for Wastewater, ...

Introduction This report provides background and funding information on water infrastructure projects, including those involving wastewater and drinking water, and water supply projects ...

Energy Conservation

This fact sheet provides information on effective energy management plan for wastewater treatment facilities, including tracking, evaluating and upgrading to automated ...



Maximizing energy efficiency in wastewater treatment plants: A ...

Maximizing energy efficiency through waste heat recovery (WHR) processes is crucial for sustainable and eco-friendly operations across multiple industries, notably in ...



Energy recovery and saving in municipal wastewater treatment



This study systematically assessed the energy recovery and saving potential of different technologies, providing valuable guidance for future optimizations of MWT practices.



[Wastewater Energy Management Toolkit , Better Buildings](#)

Toolkit resources support best practices and innovative approaches successfully used by wastewater facilities to establish and implement energy management and planning.

[DOE ESHB Chapter 20 Energy Storage Procurement](#)

This chapter supports procurement of energy storage systems (ESS) and services, primarily through the development of procurement documents such as Requests for Proposal (RFPs), ...





Contact Us

For catalog requests, pricing, or partnerships, please visit:

<https://www.asimer.es>

Phone: +34 910 56 87 42

Email: info@asimer.es

Scan the QR code to access our WhatsApp.

