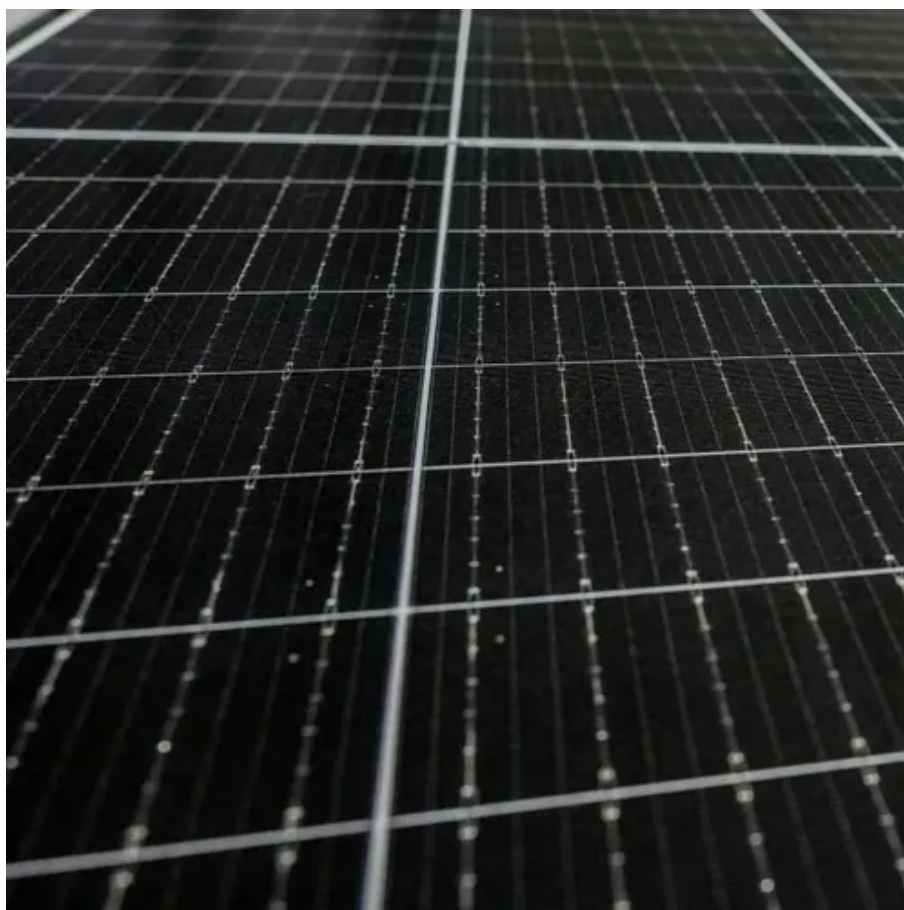




Three-phase grid-connected inverter uses only one phase





Overview

Single Phase On-Grid Inverters can be easily connected to a three-phase electricity supply by linking the inverter to any one selected phase—L1, L2, or L3—along with neutral and proper earthing.

Single Phase On-Grid Inverters can be easily connected to a three-phase electricity supply by linking the inverter to any one selected phase—L1, L2, or L3—along with neutral and proper earthing.

Generally, a single-phase inverter can realize zero injection to the grid only with a single-phase meter. However, in some cases, users want to install a single-phase inverter in a three-phase system. But with a single-phase meter, the inverter can only realize one phase's export control, which is.

When a grid-connected inverter is connected to the power grid, a three-phase inverter has 3 live wires, 1 neutral wire, and 1 ground wire, while a single-phase inverter has 1 live wire, 1 neutral wire, and 1 ground wire. If there is already a three-phase power grid, the single-phase inverter only.

A single-phase solar inverter on 3 phase supply using Single Phase On-Grid Inverters has become one of the most searched solar topics today because many homes, offices, shops, apartments, and commercial buildings are connected to three-phase electricity but want a more economical and practical.

Generally, single-phase grid-tied inverters connect to single-phase two- or three-wire network lines, while three-phase grid-tied inverters connect to three-phase four- or five-wire network lines. What Is a Single-Phase Inverter?

A single-phase inverter converts your solar DC power into standard AC.

Yes, a single-phase inverter can be used on a three-phase load. The inverter will synchronize with one of the phases in a three-phase grid, delivering power efficiently. This setup is usually sufficient for smaller residential systems and does not cause significant issues, ensuring you receive the.

I currently have 4x400W panels connected to a hoymiles 1600W grid tied micro inverter connected on a single phase. In France, for installations of less than 3kW



you can inject back in on a single phase and the Linky smart meter is clever enough to sum up the usage on all 3 phases and if the sum is.



Three-phase grid-connected inverter uses only one phase



[Single Phase On-grid Inverter for Three Phase ...](#)

Generally, a single-phase inverter can realize zero injection to the grid only with a single-phase meter. However, in some cases, users want to install ...

[Single Phase Solar Inverter on 3 Phase Supply](#)

A single-phase solar inverter on 3 phase supply using Single Phase On-Grid Inverters has become one of the most searched solar topics today because many homes, ...



Single Phase vs Three Phase Inverters: What's the Difference ...

Learn the key differences between single-phase and three-phase solar inverters, including power capacity, voltage, grid compatibility, and use cases. Choose the right inverter ...

Three-Phase Inverters

In each phase leg, there are only two switches operating at any given time, and each conducts for a one-third of the fundamental period. The output phase to neutral voltage pattern is simple to ...



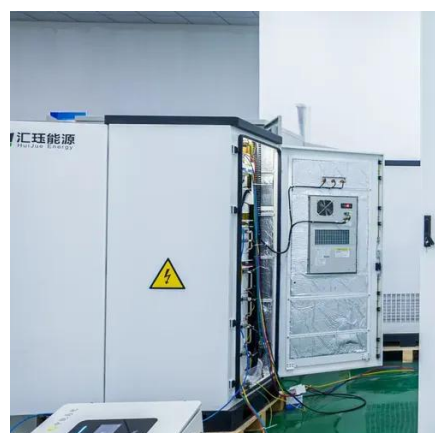
How does a single phase inverter on a 3 phase supply affect my ...

People on 3 phase supplies considering using a single-phase inverter worry that any electricity they use on the 2 phases that are not connected to solar will all be imported at their ...



Can single-phase and three-phase inverters be ...

If there is already a three-phase power grid, the single-phase inverter only needs to be connected to 1 phase wire (i.e., live wire), 1 neutral wire, and ...



Solar on single phase of 3 phase house

A 3-phase inverter, or one sold to be used with 3 individual for 3-phase, is more likely to do what you want. There are several cheap brands supporting 3-phase as well as the ...

Single Phase On-grid Inverter for Three Phase Grid



Generally, a single-phase inverter can realize zero injection to the grid only with a single-phase meter. However, in some cases, users want to install a single-phase inverter in a three-phase ...

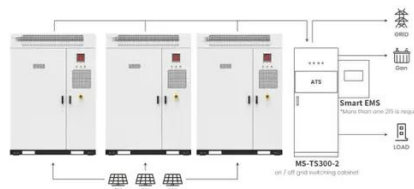


[Can single-phase and three-phase inverters be connected ...](#)

If there is already a three-phase power grid, the single-phase inverter only needs to be connected to 1 phase wire (i.e., live wire), 1 neutral wire, and 1 ground wire. Therefore, there is no ...

A single-phase inverter in a three-phase grid: is that possible and ...

Important to know: Three-phase inverters can only be connected in a three-phase grid, while single-phase ones can be installed in both single- and three-phase grids.



Application scenarios of energy storage battery products



[What is Three Phase Inverter and How Does It Work](#)

Unlike single-phase inverters that output electricity through only one phase, three phase inverters divide the output into three equally spaced waveforms. This allows for a ...

[Can a Single-Phase Inverter Be Used for a Three-Phase Load?](#)



Yes, a single-phase inverter can be used on a three-phase load. The inverter will synchronize with one of the phases in a three-phase grid, delivering power efficiently.





Contact Us

For catalog requests, pricing, or partnerships, please visit:

<https://www.asimer.es>

Phone: +34 910 56 87 42

Email: info@asimer.es

Scan the QR code to access our WhatsApp.

