



Tool battery voltage becomes low





Overview

Measure the battery's voltage under different conditions: No-load voltage: Measure the voltage when the battery is not connected to the tool. Loaded voltage: Measure the voltage when the battery is connected to the tool and under load. Compare the measured.

Measure the battery's voltage under different conditions: No-load voltage: Measure the voltage when the battery is not connected to the tool. Loaded voltage: Measure the voltage when the battery is connected to the tool and under load. Compare the measured.

Lithium-ion batteries are the most common type used in modern power tools due to their high energy density, long lifespan, and relatively low self-discharge rate. A typical tool battery consists of multiple cells connected in series and/or parallel to achieve the desired voltage and capacity. The.

The BMS is the computer inside your battery that monitors voltage, temperature, and cell balance; when it detects a risk, it can shut the pack down—sometimes permanently. This guide provides clear, step by step diagnostic and troubleshooting instructions to help you revive a seemingly "dead" pack.

Reviving worn-down power tool batteries often involves restoring sufficient voltage to bypass the charger's "defective" status and allow full recharging, potentially extending battery life and saving replacement costs. Methods commonly use a healthy battery or a controlled external voltage source.

Lithium-ion batteries are the gold standard for power tools – lightweight, long-lasting, and capable of delivering consistent power. However, like all batteries, they're prone to degradation under certain conditions. You might notice your cordless drill or impact driver running out of steam quicker.

In this Instructable, I'll demonstrate how to revive/recover a Greenworks 40-volt lawn mower battery. This process only takes a few minutes, and you don't have to open the battery or replace any parts. The same process works on most lithium power tool batteries with different voltages. All you need.

Repairing An Outdated Cordless Tool Battery?



To revive your cordless drill battery, start by checking its voltage with a multimeter. If the reading is low, understand the common causes of battery failure, such as overcharging, deep discharge, age, and environmental factors, to avoid future issues.



Tool battery voltage becomes low



How do I troubleshoot a cordless tool with low power output?

In this blog post, I'll share some practical steps to help you diagnose and resolve the low power output problem in your cordless tools. The first and most common culprit for low ...

[Why Do Your Tool Batteries Lose Power?](#)

Have you ever experienced your power tool suddenly losing strength or stopping altogether? In this video, we explain why tool batteries tend to lose their power over time and what causes



[Power Tool Troubleshooting: Startup, Performance & Safety](#)

Inspect the battery voltage and seating, disengage any blade or trigger locks, and check that the power cord and switch terminals are secure and free of corrosion.



[Low Battery Voltage: 7 Powerful Tips To Prevent ...](#)

We'll take a closer look at what is low battery voltage, its causes, signs and symptoms, risks and effects, how to test, solutions and ...



[How to Safely Revive Power Tool Batteries](#)

In reality, there may be nothing wrong with the battery; its voltage just dropped a little too low. With a battery in this condition, we can simply balance it with another battery. Power Tool ...

[How To Restore An Old Cordless Tool Battery](#)

Check the voltage output using a multimeter; a fully charged battery should read about 20 volts or the manufacturer's specified voltage. There are various methods to revive a ...



Low Battery Voltage: 7 Powerful Tips To Prevent Damage And ...

We'll take a closer look at what is low battery voltage, its causes, signs and symptoms, risks and effects, how to test, solutions and fixes, as well as pro tips to prevent low ...

[Why Do Your Tool Batteries Lose Power?](#)



Have you ever experienced your power tool suddenly losing strength or stopping altogether? In this video, we explain why tool batteries tend to ...



[How to Revive Power Tools with Worn-Down ...](#)

Reviving worn-down power tool batteries often involves restoring sufficient voltage to bypass the charger's "defective" status and ...

Diagnosing the Issue: A Comprehensive Guide on How to Test if a Tool

When a power tool stops working, it can be frustrating, especially if you're in the middle of a project. One of the most common issues could be a faulty battery. Knowing how to ...



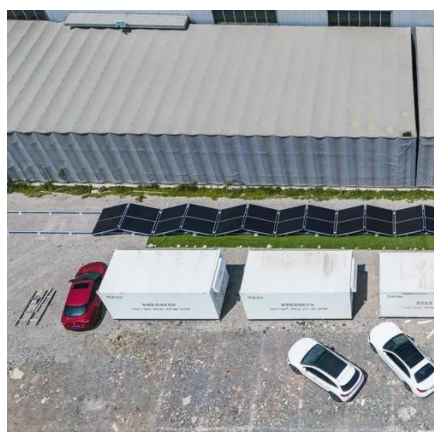
Troubleshooting Cordless Tool Battery Issues (Why They Die ...

Learn how to diagnose common cordless battery failures, understand LED fault codes, and troubleshoot issues like rapid draining or refusal to charge

Why Is Your Power Tool Losing Power? Common Causes and Fixes



Test for voltage drops: If your tool slows down prematurely, check the battery's output with a multimeter. Healthy batteries should provide 18V-20V for most cordless tools.



[Power Tool Troubleshooting: Startup, Performance ...](#)

Inspect the battery voltage and seating, disengage any blade or trigger locks, and check that the power cord and switch terminals are ...

Diagnosing the Issue: A Comprehensive Guide on How to Test if ...

When a power tool stops working, it can be frustrating, especially if you're in the middle of a project. One of the most common issues could be a faulty battery. Knowing how to ...



[How to Revive Power Tools with Worn-Down Batteries](#)

Reviving worn-down power tool batteries often involves restoring sufficient voltage to bypass the charger's "defective" status and allow full recharging, potentially extending ...

[How To Restore An Old Cordless Tool Battery](#)



Check the voltage output using a multimeter; a fully charged battery should read about 20 volts or the manufacturer's specified ...





Contact Us

For catalog requests, pricing, or partnerships, please visit:

<https://www.asimer.es>

Phone: +34 910 56 87 42

Email: info@asimer.es

Scan the QR code to access our WhatsApp.

