



# Uninterruptible solar container power supply system project for Hungarian computer room





## Uninterruptible solar container power supply system project for Hung



### linux

I understand these are uninterruptible sleep states often related to waiting for data from hardware such as a hard disk. This is a production server so rebooting is a very last ...

### linux

An uninterruptible process is a process which happens to be in a system call (kernel function) that cannot be interrupted by a signal. To understand what that means, you need to understand ...



### Why there is a state called `TASK_UNINTERRUPTIBLE` in Linux ...

As you could read from that answer, setting the current process state to `TASK_UNINTERRUPTIBLE` is needed for make `schedule()` call, performed by that thread, to ...

### [How to stop 'uninterruptible' process on Linux?](#)

I have a VirtualBox process hanging around which I tried to kill (KILL/ABORT) but without success. The parent pid is 1 (init). top shows the process as D which is documented as ...



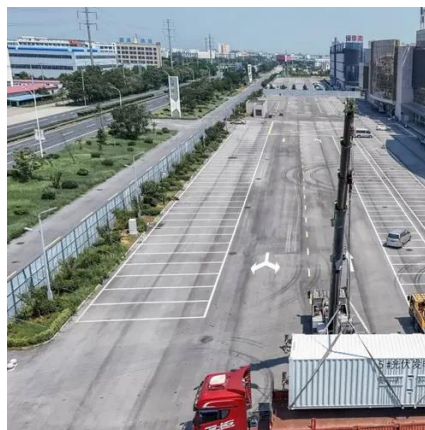
### Do we need to call set\_current\_state (TASK

Yes, you must call set\_current\_state() before calling schedule(), because otherwise the scheduler will not remove the task from the run queue (if you just want to ...



### In Linux, what do all the values in the "top" command mean?

The man page says what the state codes are mapped to, but not what they actually mean. From the top man page: 'D' = uninterruptible sleep 'R' = running 'S' = sleeping ...



### **c**

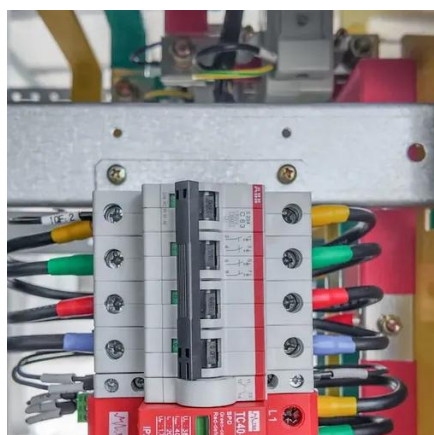
On one particular system we see WIS-Streamer get stuck in an TASK\_UNINTERRUPTIBLE state; From the command line: the ps status for the process is ...



**linux**



For Linux "defunct" and "zombie" processes are the same. From man ps: Processes marked are dead processes (so-called "zombies") that remain because ...



[how to find out what it is waiting for](#)

When looking at the process with "ps ax" the stat column is "DI" which means "uninterruptible sleep (usually IO)". Is it possible to find out more details on what the process is ...

## Linux Process States

A process performing I/O will be put in D state (uninterruptible sleep), which frees the CPU until there is a hardware interrupt which tells the CPU to return to executing the ...





## Contact Us

---

For catalog requests, pricing, or partnerships, please visit:

<https://www.asimer.es>

Phone: +34 910 56 87 42

Email: [info@asimer.es](mailto:info@asimer.es)

Scan the QR code to access our WhatsApp.

