



What are the Cairo Communication Engineering base stations





Overview

The stations are as follows: El Nozha – Hisham Barakat – Qobaa – Omar ibn El Khatab – Haykesteb – Adly Mansour. The track is 7km approximately. The project has a Gow repairing workshop built upon 65 feddans at its end.

The stations are as follows: El Nozha – Hisham Barakat – Qobaa – Omar ibn El Khatab – Haykesteb – Adly Mansour. The track is 7km approximately. The project has a Gow repairing workshop built upon 65 feddans at its end.

The Ramses Exchange is a telecoms building in downtown Cairo that is a focal point of the Internet in Egypt. It is situated at 26 Ramses Street. [1] It was built in the 1980s. [2] Reports related to the 2011 Internet shutdown in Egypt refer to the Ramses Exchange as the location where the shut.

CML 3 Phase 4B consists of 6 overground stations and 7 bridges connecting them. The stations are as follows: El Nozha – Hisham Barakat – Qobaa – Omar ibn El Khatab – Haykesteb – Adly Mansour. The track is 7km approximately. The project has a Gow repairing workshop built upon 65 feddans at its end.

Telecom Egypt owns and operates 6 commercial data center facilities located at diverse locations in Egypt. The 7th data center facility, Smart Village B6, was commissioned in 2021. By continuously progressing its infrastructure and connectivity, offering more resiliency, diversity and protection.

Cell towers in cellular telephone networks are known as base stations. When a person makes or receives a call using their cell phone, each of these devices connects to a specific cell tower which in turn connects the handset to a wired type public switched telephone network (PSTN), among other.

Cairo, Egypt – In the heart of Egypt’s bustling capital, where ancient monuments meet modern mobility, one of the region’s most technically demanding infrastructure projects is underway: the new Giza Station on Cairo Metro Line 4. With a planned depth of up to 81 m, it will be one of the deepest.

Telecom Egypt (TE) is Egypt’s only fixed network operator, owns and operates the TE Transit Corridor (or Trans-Egypt) infrastructure, which comprises the terrestrial infrastructure linking the Red Sea to the Mediterranean Sea, over multiple diverse



and redundant routes. Additional terrestrial. How many trans-Egypt crossing routes does Telecom Egypt have?

Today, Telecom Egypt owns and operates 10 diversified terrestrial Trans-Egypt crossing routes which connect all landing stations on the Red and Mediterranean Seas.

What are the different types of base stations?

Some basic types of base stations are as follows: Macro-base stations are tall towers ranging from 50 to 200 feet in height, placed at strategic locations to provide maximum coverage in a given area. Those are equipped with large towers and antennas that transmit and receive radio signals from wireless devices.

What is a wireless base station?

A base station represents an access point for a wireless device to communicate within its coverage area. It usually connects the device to other networks or devices through a dedicated high bandwidth wire or fiber optic connection. Base stations typically have a transceiver, capable of sending and receiving wireless signals;.

Why are base stations important in cellular communication?

Base stations are important in the cellular communication as it facilitate seamless communication between mobile devices and the network communication. The demand for efficient data transmission are increased as we are advancing towards new technologies such as 5G and other data intensive applications.



What are the Cairo Communication Engineering base stations



Telecom Infrastructure - Mobi Egypt

Setting new benchmarks in telecommunications infrastructure, mobi egypt has successfully delivered over 10,000 turnkey towers and cell sites, ensuring uninterrupted connectivity for all.

...

Telecom Infrastructure - Mobi Egypt

Setting new benchmarks in telecommunications infrastructure, mobi egypt has successfully delivered over 10,000 turnkey towers and cell sites, ...



Greater Cairo Metro

Through Egyptian French Consortiums, Orascom Construction played an integral role in the development of Greater Cairo Metro Lines II and III since the late 1980s.

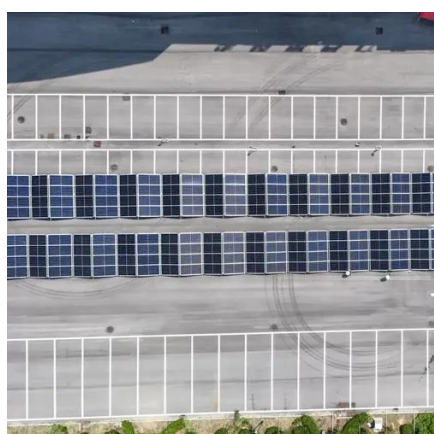
Ramses Exchange

The Ramses Exchange, located near the center of Cairo is the main "wire center" for Telecom Egypt, carrying not only municipal telecommunications traffic, but also serving as the main ...



TelecomEgyptInfrastructureMap

Explore Telecom Egypt's interactive map for detailed infrastructure insights and services.



Central Ramses: Witness to Cairo's transformations and the ...

At one end is a building housing the North Cairo Real Estate Registry and several specialized courts. Then comes the Azbakeya Police Station, the Railway Hospital, the ...



Greater Cairo Metro

Through Egyptian French Consortiums, Orascom Construction played an integral role in the development of Greater Cairo Metro Lines II and III ...



Base Stations



The present-day tele-space is incomplete without the base stations as these constitute an important part of the modern-day scheme ...



Cairo Metro Line 3

CML 3 Phase 4B consists of 6 overground stations and 7 bridges connecting them. The stations are as follows: El Nozha - Hisham Barakat - Qobaa - Omar ibn El Khatab - Haykesteb - Adly ...

Egypt

In June 2024, the IEX subsea system landed in Egypt at two cable landing stations -- Zafarana2 on the Red Sea and Sidi Kerir on the Mediterranean -- connects two seas and two continents ...



Egypt

In June 2024, the IEX subsea system landed in Egypt at two cable landing stations -- Zafarana2 on the Red Sea and Sidi Kerir on the Mediterranean ...

Metro expansion in Cairo: Bauer executes specialist foundation



The specialist foundation engineering works are expected to be completed by the end of 2025 - a key milestone on the path toward modern urban infrastructure in Cairo.



Base Stations

The present-day tele-space is incomplete without the base stations as these constitute an important part of the modern-day scheme of wireless communications. They are ...

Telecom_Egypt_The_Digital_Hub

Devoted to offer its partners geographic diversity, Telecom Egypt is pursuing its plans to boost its international infrastructure by building new landing stations on the Mediterranean and Red ...





Contact Us

For catalog requests, pricing, or partnerships, please visit:

<https://www.asimer.es>

Phone: +34 910 56 87 42

Email: info@asimer.es

Scan the QR code to access our WhatsApp.

