



# What are the dimensions and weight of a solar panel





## Overview

---

Standard residential solar panels are typically around 5.8 feet long by 3.5 feet wide and weigh between 40 to 50 pounds. However, the exact dimensions depend heavily on the panel's technology, wattage, and the manufacturer's design.

Standard residential solar panels are typically around 5.8 feet long by 3.5 feet wide and weigh between 40 to 50 pounds. However, the exact dimensions depend heavily on the panel's technology, wattage, and the manufacturer's design.

Standard residential solar panels are typically around 5.8 feet long by 3.5 feet wide and weigh between 40 to 50 pounds. However, the exact dimensions depend heavily on the panel's technology, wattage, and the manufacturer's design. Understanding these specifications is crucial for determining roof.

Most residential solar panels in 2025 come in three main configurations: The most common choice for residential installations, 60-cell panels are arranged in a 6x10 grid. These panels typically produce between 350-450 watts and are ideal for most home installations due to their manageable size and.

Every solar panel consists of solar cells, which are typically 6-by-6 inches. Based on the number of cells, there are two common types of solar panels available. Typically, residential solar panels contain 60 cells and commercial panels have 72. Both types of solar panels have different dimensions.

Turn a sunny day into savings with the right solar panel size Most homes use 60-cell panels measuring 65-by-39 inches. Larger panels, like 72- or 96-cell grids, can boost efficiency. Half-cell panels fit twice the number of cells into a standard-size panel. Depending on your energy needs, you'll.

Residential panels are usually made up of 60 PV solar cells, arranged in a 10 by 6 grid pattern. Although exact dimensions vary by manufacturer, home solar panels usually measure about 5.4 feet wide by 3.25 feet long (about 17.6 square feet), with a depth of less than two inches. Businesses and.

The size of solar panels and their dimensions are critical components in designing a solar energy system. It is essential to understand the physical characteristics of solar panels for both residential and commercial installations. The size of the solar



panel and weight of the solar panel are.



## What are the dimensions and weight of a solar panel



### [Solar panel size and weight: everything you need ...](#)

Learn everything about solar system size, solar panel dimensions, and how much solar panels weigh in this complete guide for ...

### [Solar Panels Size & Weight \(Including Commercial Dimensions\)](#)

Individual PV solar cells are thin slices of silicon that typically measure 6 inches long by 6 inches wide. Multiple ...



### [Solar Panels Size & Weight \(Including Commercial Dimensions\)](#)

Individual PV solar cells are thin slices of silicon that typically measure 6 inches long by 6 inches wide. Multiple solar cells are assembled together to form a rectangular ...

### [Solar Panel Size And Weight: A Comprehensive Guide](#)

When considering residential solar panels, typical configurations consist of 60 cells measuring approximately 3.25 feet by 5.5 feet. These panels cover an area of 17.62 square feet and weigh



### [The Ultimate Guide to Solar Panel Size, Weight](#)

Find the exact solar panel size & weight in our 2025 guide. Our complete chart compares models by ft/cm and lbs/kg to help you plan ...



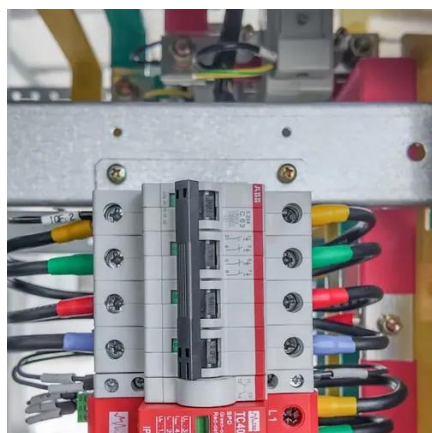
### [Solar panel size and weight: everything you need to know](#)

Learn everything about solar system size, solar panel dimensions, and how much solar panels weigh in this complete guide for residential photovoltaic installations.



### [Solar Panels Size - Complete Guide to Dimensions, Weight](#)

Residential solar panels are the most common type used today. The usual solar panels size for homes is about 1762mm long and 1134mm wide. Most of these panels weigh ...



### [Solar Panel Size and Weight: A 2025 Guide \(with Examples\)](#)



What's the average solar panel size and weight? Our 2025 guide gives residential & commercial examples and explains why a structural roof assessment is essential.



### [Solar Panel Dimensions and Weight: A Complete Guide , Angi](#)

Residential solar panel dimensions can vary slightly from brand to brand, but this guide can help you understand the basics and choose the best option.

### [Solar Panel Size & Dimensions Guide 2025 . Complete Specs](#)

Complete guide to solar panel sizes and dimensions. Compare 60-cell vs 72-cell panels, weights, roof space requirements, and installation specs for 2025.



### **The Ultimate Guide to Solar Panel Size, Weight & Wattage (2025)**

Find the exact solar panel size & weight in our 2025 guide. Our complete chart compares models by ft/cm and lbs/kg to help you plan your installation.

### [Size of Solar Panels Explained: Residential and ...](#)



These panels come in a standard size, which is approximately 1650 x 990 mm (65 x 39 inches). They are smaller in size and lighter in ...



### [How Big Is a Solar Panel? Size, Weight & Power Explained](#)

Discover the typical size, weight, and power of one solar panel. Learn key specs to choose the right solar panel for your needs.

### [Solar Panel Size And Weight: A Comprehensive Guide](#)

Residential solar panel dimensions can vary slightly from ...



### **Size of Solar Panels Explained: Residential and Commercial ...**

These panels come in a standard size, which is approximately 1650 x 990 mm (65 x 39 inches). They are smaller in size and lighter in weight compared to commercial solar ...



## Contact Us

---

For catalog requests, pricing, or partnerships, please visit:

<https://www.asimer.es>

Phone: +34 910 56 87 42

Email: [info@asimer.es](mailto:info@asimer.es)

Scan the QR code to access our WhatsApp.

