



# What are the equipment for solar energy storage and grid connection





## Overview

---

To establish an effective connection between solar energy systems and energy storage solutions, several essential components are required. 1. Solar panels, 2. Inverters, 3. Charge controllers, 4. Energy storage systems, 5. Battery management systems, 6. Wiring and electrical.

To establish an effective connection between solar energy systems and energy storage solutions, several essential components are required. 1. Solar panels, 2. Inverters, 3. Charge controllers, 4. Energy storage systems, 5. Battery management systems, 6. Wiring and electrical.

Whether you decide to connect your home renewable energy system to the electric grid or not, you will need to invest in some additional equipment (called "balance-of-system") to condition the electricity, safely transmit the electricity to the load that will use it, and/or store the electricity for.

A solar grid tie system is the most popular and cost-effective way to harness solar energy for your home while maintaining connection to your local utility grid. Unlike off-grid systems that require expensive battery storage, grid-tied solar systems allow you to use solar power when it's available.

To establish an effective connection between solar energy systems and energy storage solutions, several essential components are required. 1. Solar panels, 2. Inverters, 3. Charge controllers, 4. Energy storage systems, 5. Battery management systems, 6. Wiring and electrical components. Among.

When is choosing the right equipment most important?

To go solar, you'll need solar panels, inverters, racking equipment, and performance monitoring equipment--at a minimum. Depending on where you live, you may also consider a solar battery. The components of a solar panel system are pretty simple.

There are three main types of residential solar panel installations: grid-tied, hybrid, and off-grid. Grid-tied systems are the most common and the cheapest because they use the least amount of equipment: solar panels, wiring, racking, grid-tied inverters, and a net meter. Hybrid solar systems use.



The components required for connecting a system to the grid depend on the type of system (e.g., solar, wind, hybrid, etc.) and its size. Here's an overview of the essential components for on-grid (grid-tied) systems: Solar Panels (Photovoltaic modules): Convert sunlight into electricity (DC). Wind.



## What are the equipment for solar energy storage and grid connection

---



### **Grid-Tied Solar Systems: How They Work and When They Make ...**

In this guide, we'll explore how grid-tied systems function, their environmental and financial benefits, ideal scenarios for installation, design considerations, and key questions to ...

### [Solar Power System Equipment: Needs, Costs, Pros, And Cons](#)

Hybrid solar systems use the same equipment as grid-tied systems but also include a charge controller, energy storage system, and a hybrid inverter capable of connecting the solar ...



### **What equipment is needed to connect solar energy to energy storage**

To establish an effective connection between solar energy systems and energy storage solutions, several essential components are required. 1. Solar panels, 2. Inverters, 3. ...



### [Balance-of-System Equipment Required for ...](#)

You will need power conditioning equipment, safety equipment, and meters and instrumentation. Both grid-connected and off-grid home renewable ...



## Balance-of-System Equipment Required for Renewable Energy ...

You will need power conditioning equipment, safety equipment, and meters and instrumentation. Both grid-connected and off-grid home renewable energy systems require additional "balance ...



## [Sol-Ark® : Commercial & Home Energy Storage Systems](#)

Sol-Ark® provides best-in-class solar energy storage systems and solutions for homes, commercial businesses, and industrial applications. Learn more.



## What are Solar Energy Equipment?

Discover the essential equipment used in solar energy systems! Learn more about solar panels, inverters, batteries, charge controllers, and more. Learn about the equipment needed for ...



## [Grid Connection Components - Sunburst Solar Solutions](#)



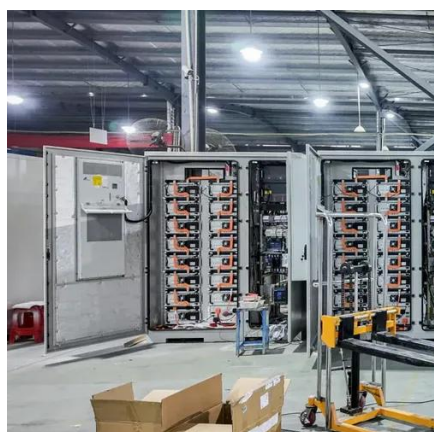


The components required for connecting a system to the grid depend on the type of system (e.g., solar, wind, hybrid, etc.) and its size. Here's an overview of the essential components for on ...



### [The Equipment You Need For A Solar Panel System](#)

You need solar panels, inverters, racking equipment, and performance monitoring equipment to go solar. You also might want an energy storage system (aka solar battery), ...



### [Components of Grid-Tied Solar Systems: A Guide, AltE Store](#)

Since 1999, we've provided our customers with direct access to the best equipment for DIY grid-tied solar system design and installation and a wide selection of other solar parts and kits.



### **Solar Grid Tie Systems: Complete 2025 Guide To Grid-Tied Solar**

A solar grid tie system is the most popular and cost-effective way to harness solar energy for your home while maintaining connection to your local utility grid. Unlike off-grid ...





## Contact Us

---

For catalog requests, pricing, or partnerships, please visit:

<https://www.asimer.es>

Phone: +34 910 56 87 42

Email: [info@asimer.es](mailto:info@asimer.es)

Scan the QR code to access our WhatsApp.

