



What are the specifications of 60 solar panels





Overview

60-cell solar panel dimensions are around 65-by-39 inches. Depths range anywhere from a fraction of an inch to 1 1/2 inches. Most residential installations use this size solar panel, which produces an average of 250 to 350 watts of electricity.

60-cell solar panel dimensions are around 65-by-39 inches. Depths range anywhere from a fraction of an inch to 1 1/2 inches. Most residential installations use this size solar panel, which produces an average of 250 to 350 watts of electricity.

Standard Residential Panels Optimize Space and Handling: The industry-standard 60-cell panel dimensions (65" × 39" × 1.5") aren't arbitrary - they represent the optimal balance between power output, installation ease, and roof space utilization. At 40-46 pounds, they can be safely handled by.

The size of solar panels with the same cell count varies slightly, depending on the brand and model. Still, most 60-cell solar panels have a size of 39" X 66" and most 72-cell solar panels have sizes of around 39" X 77". However, panels with cell counts of 96, 120, and 144 may have different sizes.

The selection of solar panels should be the right fit between your space, weight, and solar power energy requirements. Most of the solar modules in the residential category have 60-cell solar panels. These panels come in a standard size, which is approximately 1650 x 990 mm (65 x 39 inches). They.

The number of cells within a panel dictates its size - 60-cell and 72-cell panels are the most common solar panel sizes. 60-cell solar panels are the standard solar panel size for homes. They are usually 5.5 feet by 3 feet and weigh around 40 pounds. 72- cell panels are bigger, measuring around 6.5.

Doing Solar Differently .

There are 3 standardized sizes of solar panels, namely: 60-cell solar panels size. The dimensions of 60-cell solar panels are as follows: 66 inches long, and 39 inches wide. That's basically a 66×39 solar panel. But what is the wattage?



That is unfortunately not listed at all. 72-cell solar panel.



What are the specifications of 60 solar panels

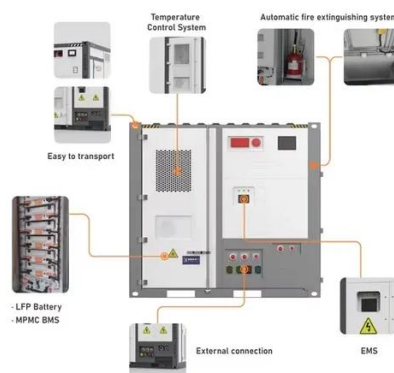


[Standard Solar Panel Sizes And Wattages \(100W-500W ...](#)

As we can see, those 60-cell, 72-cell, and 96-cell solar panel dimensions are a bit theoretical. These are the practical solar panel dimensions by wattage from solar panels that are actually ...

[What Are the Common Solar Panel Sizes?](#)

With a power output ranging from 270 to 300 watts, 60-cell panels are versatile and suitable for most home rooftops. They strike a balance between size and efficiency, which is ...

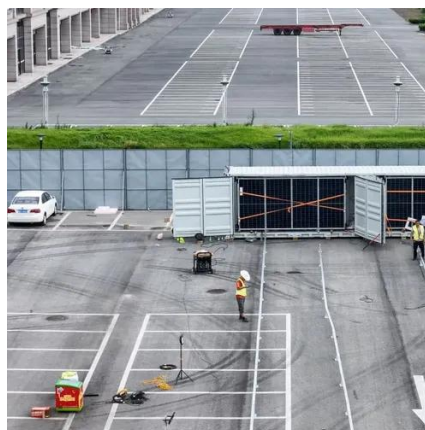


[Understanding the Size of One Solar Panel: A Complete Tutorial ...](#)

The article focuses on the size of solar panels, specifically detailing the standard dimensions of 60-cell and 72-cell units and their implications for homeowners considering ...

Complete Guide to Solar Panel Size

60-cell solar panels are the standard solar panel size for homes. They are usually 5.5 feet by 3 feet and weigh around 40 pounds. 72-cell panels are bigger, measuring around 6.5 feet by 3 ...



[Size of Solar Panels Explained: Residential and ...](#)

Knowing about the size and solar panel weight is necessary to install effectively and it's performance. Here we explain them in detail.



[Solar Panel Dimensions and Weight: A Complete Guide . Angi](#)

Most homes use 60-cell panels that are roughly 65-by-39 inches. Depending on the brand you buy, you'll find a couple of inches of variation on either dimension. For 60-cell ...



Complete Guide to Solar Panel Size

How to Measure Solar Panel SizeSolar Panel Dimensions and WeightHow Big Are Portable Solar Panels?Factors That Are More Important Than Solar Panel SizeHow to Find The Best Solar Panel SizeMany people want to know the physical size of solar panels, not just how many cells the hold. The average 60-cell solar panel is about 65 inches by 39 inches, or 5.4 feet by 3.25 feet, and weighs around 40 to 50 pounds.The actual dimensions will vary from panel to panel, so we've listed a few for some of the most popular 60-cell panels on the marke See more on solarreviews sbmsolar [PDF]



- IP65/IP55 OUTDOOR CABINET
- OUTDOOR MODULE CABINET
- OUTDOOR 5G BASE STATION CABINET
- WATERPROOF



SBM 60W Solar Panel Specifications

Doing Solar Differently.

SBM 60W Solar Panel Specifications

Doing Solar Differently.



[Solar Panel Size & Dimensions Guide 2025 . Complete Specs](#)

Complete guide to solar panel sizes and dimensions. Compare 60-cell vs 72-cell panels, weights, roof space requirements, and installation specs for 2025.

Exploring Solar Panel Technology: 60, 72, and 96 Cell Panels ...

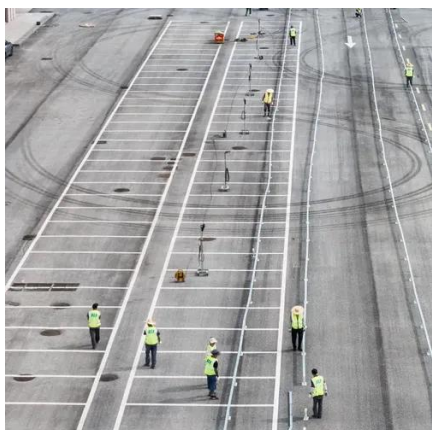
60-cell solar panels are a popular choice for residential installations due to their balanced combination of size, weight, and power output. They typically feature a 6x10 grid of cells, ...

114KWh ESS



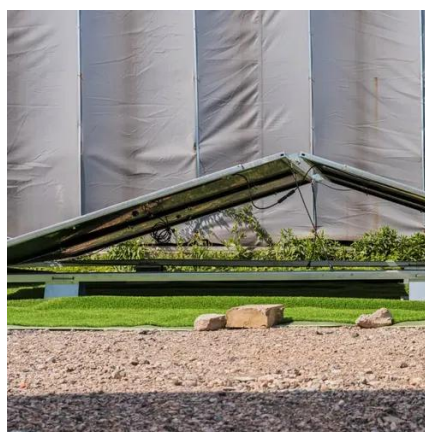
[A Complete Guide to Solar Panel Size , 8MSolar](#)

Residential solar installations usually use 60-cell panels, which have become the industry standard for home energy systems. These panels measure approximately 65 inches ...



Size of Solar Panels Explained: Residential and Commercial ...

Knowing about the size and solar panel weight is necessary to install effectively and it's performance. Here we explain them in detail.





Contact Us

For catalog requests, pricing, or partnerships, please visit:

<https://www.asimer.es>

Phone: +34 910 56 87 42

Email: info@asimer.es

Scan the QR code to access our WhatsApp.

