



What communication devices are on the base station





Overview

In the area of wireless computer networking, a base station is a radio receiver/transmitter that serves as the hub of the local wireless network, and may also be the gateway between a wired network and the wireless network. It typically consists of a low-power transmitter and .

A base station is a fixed point that enables wireless communication between mobile devices and the network. These stations consist of radio transceivers, antennas, and a controller which facilitate the exchange of signals.

A base station is a fixed point that enables wireless communication between mobile devices and the network. These stations consist of radio transceivers, antennas, and a controller which facilitate the exchange of signals.

The present-day tele-space is incomplete without the base stations as these constitute an important part of the modern-day scheme of wireless communications. They are referred to as cell towers or cellular antennas. These types of objects are an inevitability since they serve the purpose of.

Base station (or base radio station, BS) is – according to the International Telecommunication Union 's (ITU) Radio Regulations (RR) [1] – a " land station in the land mobile service." A base station is called node B in 3G, eNB in LTE (4G), and gNB in 5G. The term is used in the context of mobile.

A base station, also known as a cell tower or base transceiver station (BTS), is a crucial component of wireless communication networks. It serves as the central point for communication between mobile devices and the rest of the network. Base stations are used in various wireless communication.

A base station is a critical component of wireless communication networks. It serves as the central point of a network that connects various devices, such as smartphones, tablets, and computers. The base station transmits and receives signals, ensuring seamless communication over radio frequencies.

A base station is an integral component of wireless communication networks, serving as a central point that manages the transmission and reception of signals between cellular networks and mobile devices. It ensures that users can access voice and data services effectively. Now that we have a solid.



They are communication hubs in a cellular network that ensure continuous service as users move throughout a geographical area. What is a Base Station?

A base station is a fixed transceiver that serves as the central communication point for mobile devices within a defined geographical area, known as.



What communication devices are on the base station



Base station

In the area of wireless computer networking, a base station is a radio receiver/transmitter that serves as the hub of the local wireless network, and may also be the gateway between a wired ...

[Understanding Base Stations in Mobile Communication](#)

A base station is a fixed point that enables wireless communication between mobile devices and the network. These stations consist of radio transceivers, antennas, and a controller which ...



Base Station Equipment - SolveForce Fiber Internet, Cloud ...

Base station equipment, also known as cell site equipment, is a crucial component of cellular networks and wireless communication systems. It plays a central role in facilitating wireless ...



[Base Station's Role in Wireless Communication Networks](#)

A base station is a critical component of wireless communication networks. It serves as the central point of a network that connects various devices, such as ...

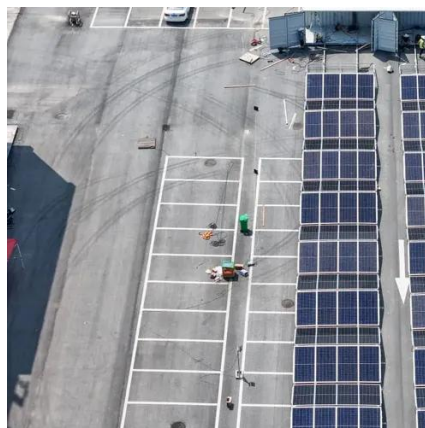


Base Station's Role in Wireless Communication Networks

A base station is a critical component of wireless communication networks. It serves as the central point of a network that connects various devices, such as smartphones, tablets, and computers.

Understanding Base Stations: The Backbone of Wireless ...

In cellular networks, a base station typically consists of antennas, a transmitter/receiver system, and a base station controller (BSC). The base station is ...



Understanding Base Stations in Mobile ...

A base station is a fixed point that enables wireless communication between mobile devices and the network. These stations consist of radio ...



What Is a Base Station? Definition and How It Works



A base station is a fixed transceiver that serves as the central communication point for mobile devices within a defined geographical area, known as a cell. It is sometimes called ...



What Is A Base Station?

The base station in a Wi-Fi network is a device that connects to an internet service provider (ISP) and enables wireless communication between devices such as computers, ...

[What is a Base Station? -- From Communication Core to ...](#)

Simply put, a base station (BS) is a wireless transceiver device in a mobile communication network that provides wireless coverage and communicates with mobile ...



[What is a Base Station? -- From Communication ...](#)

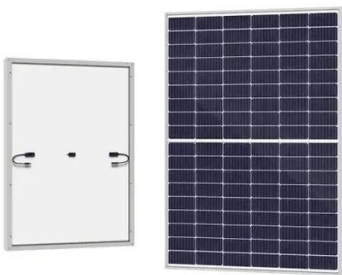
Simply put, a base station (BS) is a wireless transceiver device in a mobile communication network that provides wireless ...



Base Stations



The present-day tele-space is incomplete without the base stations as these constitute an important part of the modern-day scheme of wireless communications. They are ...



Understanding Base Stations: The Backbone of Wireless Communication

In cellular networks, a base station typically consists of antennas, a transmitter/receiver system, and a base station controller (BSC). The base station is ...

Base Stations

The present-day tele-space is incomplete without the base stations as these constitute an important part of the modern-day scheme ...



What Is Base Station In Wireless Communication?

Also known as a cell site, base transceiver station (BTS), or Node B, the base station plays a vital role in providing wireless connectivity to mobile devices, laptops, and other ...

Base station



OverviewComputer networkingLand
surveyingWireless communicationsSee also

In the area of wireless computer networking, a base station is a radio receiver/transmitter that serves as the hub of the local wireless network, and may also be the gateway between a wired network and the wireless network. It typically consists of a low-power transmitter and wireless router.





Contact Us

For catalog requests, pricing, or partnerships, please visit:

<https://www.asimer.es>

Phone: +34 910 56 87 42

Email: info@asimer.es

Scan the QR code to access our WhatsApp.

