



What does 1P cycle of solar container battery mean





Overview

“P” stands for “Parallel,” and the number preceding it indicates how many cells are connected in parallel within a module. For instance, in a 1P battery pack, one cell is used per module, while in a 2P configuration, two cells are connected in parallel to form a more robust unit.

“P” stands for “Parallel,” and the number preceding it indicates how many cells are connected in parallel within a module. For instance, in a 1P battery pack, one cell is used per module, while in a 2P configuration, two cells are connected in parallel to form a more robust unit.

As I understand it 1P is the watt hours of the battery calculated by multiplying battery V X battery ah. So in my case $12 \times 280 = 3360$. So if the wh are 3360 how do I now calculate the Amps for the maximum charge current?

I can't find how to do this final conversion and I hate just taking someone's.

What is a Solar Battery Cycle?

A solar battery cycle refers to the process of charging and discharging a battery using solar energy. A battery's cycle life is the number of times it can be fully charged and discharged before its capacity significantly decreases. The cycle life of a solar battery is.

1P and 2P refer to the configuration of cells within a battery pack. “P” stands for “Parallel,” and the number preceding it indicates how many cells are connected in parallel within a module. For instance, in a 1P battery pack, one cell is used per module, while in a 2P configuration, two cells are.

A battery cycle is when a battery completes a full charge and discharge. A ‘cycle’ of charging. Battery warranties are in place to guarantee a batteries performance for a specific amount of cycles within the warranty period . It does not mean your battery will stop working after the 10,000 cycles.

What constitutes a "cycle" with regards to lithium-ion or similar batteries?

Generally, in discussions about batteries in the context of home storage, one cycle



will refer to a battery being fully discharged to the greatest extent the integrated system it is a part of allows. Or if it is not part.

Below is a diagram of a standard 8 cell lithium ion string. Unless there are specific reasons for doing otherwise, this is the most desirable and simplest configuration: In the above example, 8 cells are configured in a single string. This is an “8S1P” configuration. The “8S” indicates that there.



What does 1P cycle of solar container battery mean



Unlock the Power of the Sun: How Many Cycles Will Your Solar Battery

A solar battery cycle refers to the process of charging and discharging a battery using solar energy. A battery's cycle life is the number of times it can be fully charged and ...



Unlock the Power of the Sun: How Many Cycles Will Your Solar ...

A solar battery cycle refers to the process of charging and discharging a battery using solar energy. A battery's cycle life is the number of times it can be fully charged and ...

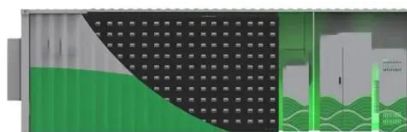
[What's A Charge Cycle in Solar Batteries?](#)

A charge cycle for a lithium-ion battery means using it from full to empty and then charging it back up again. This is how batteries work in things like ...



[The Lifecycle of a Solar Battery Explained](#)

What Is the Lifecycle of a Solar Battery? The lifecycle of a solar battery refers to the total number of complete charge and discharge cycles it can undergo before its capacity ...

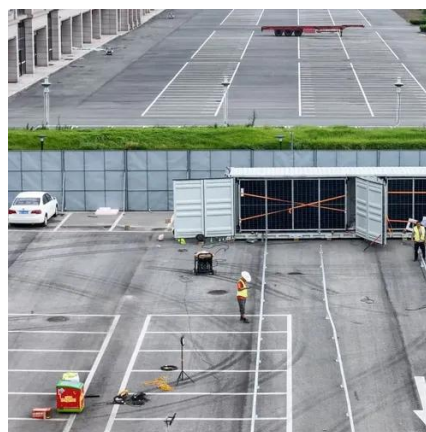


2P & 1P Battery: What Does Mean?

"P" stands for "Parallel," and the number preceding it indicates how many cells are connected in parallel within a module. For instance, in a 1P battery pack, one cell is used per ...

What does 1P, 2P, 3P, 4P etc mean?

What does 1P, 2P, 3P, 4P etc mean? More battery cells mean more power and run time. Series and parallel circuits can be combined together to pack more punch into a battery. EGO ...



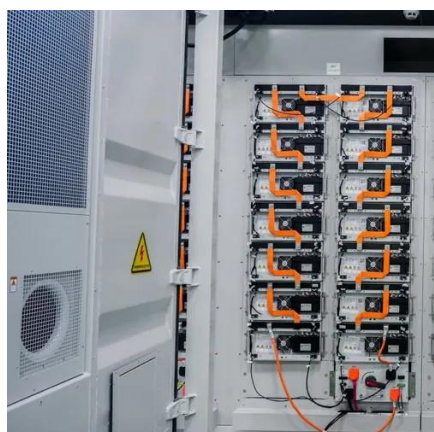
[Solar Battery 101: A Definitive Guide for Beginners](#)

A deep cycle battery allows you to draw more energy from it without damaging it. Up to 50% of the energy in a deep cycle battery is usable without damaging the battery.

[What's A Charge Cycle in Solar Batteries?](#)



A charge cycle for a lithium-ion battery means using it from full to empty and then charging it back up again. This is how batteries work in things like solar energy setups at home.



What constitutes a "cycle" with regards to lithium-ion or similar

Generally, in discussions about batteries in the context of home storage, one cycle will refer to a battery being fully discharged to the greatest extent the integrated system it is a part of allows. ...

How many times can a battery be cycled?

In relation to using solar to charge your battery, you get a once daily cycle of charge and then discharge. Moreover, your battery will charge when the start is shining, using ...



How many times can a battery be cycled?

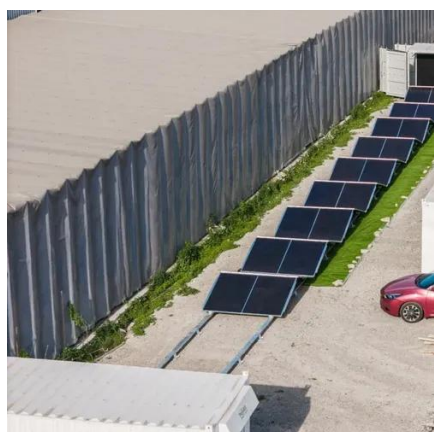
In relation to using solar to charge your battery, you get a once daily cycle of charge and then discharge. Moreover, your battery will ...



What is 1P charge rate



A P rate is 1P is a charge or discharge rate equal to the cell's rated watt hours, which is Battery Nominal voltage time the rated amp hours of the cell. Similarly 0.5P is equal ...

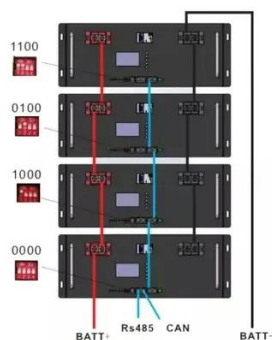


Strings, Parallel Cells, and Parallel Strings

The "8S" indicates that there are 8 cells in series and the "1P" indicates that there are no paralleled cells. If each cell is 10 amp hours and 3.3 volts, the battery pack above would be 10 ...

Solar Battery 101: A Definitive Guide for Beginners

A deep cycle battery allows you to draw more energy from it without damaging it. Up to 50% of the energy in a deep cycle battery is usable ...



What constitutes a "cycle" with regards to lithium-ion or similar

Generally, in discussions about batteries in the context of home storage, one cycle will refer to a battery being fully discharged to the greatest extent the integrated system it is a ...

2P & 1P Battery: What Does Mean?



"P" stands for "Parallel," and the number preceding it indicates how many cells are connected in parallel within a module. For ...



[The Lifecycle of a Solar Battery Explained](#)

What Is the Lifecycle of a Solar Battery? The lifecycle of a solar battery refers to the total number of complete charge and discharge ...



Contact Us

For catalog requests, pricing, or partnerships, please visit:

<https://www.asimer.es>

Phone: +34 910 56 87 42

Email: info@asimer.es

Scan the QR code to access our WhatsApp.

