



What is a power network directional base station





Overview

In communications, a base station is a communications station installed at a fixed location and used to communicate as part of one of the following: • a system, or; • a system such as or .

In the area of wireless computer networking, a base station is a radio receiver/transmitter that serves as the hub of the local wireless network, and may also be the gateway between a wired network and the wireless network. It typically consists of a low-power transmitter and wireless.

In the area of wireless computer networking, a base station is a radio receiver/transmitter that serves as the hub of the local wireless network, and may also be the gateway between a wired network and the wireless network. It typically consists of a low-power transmitter and wireless.

A base station represents an access point for a wireless device to communicate within its coverage area. It usually connects the device to other networks or devices through a dedicated high bandwidth wire of fiber optic connection. Base stations typically have a transceiver, capable of sending and.

Base station (or base radio station, BS) is – according to the International Telecommunication Union 's (ITU) Radio Regulations (RR) [1] – a " land station in the land mobile service." A base station is called node B in 3G, eNB in LTE (4G), and gNB in 5G. The term is used in the context of mobile.

This topic introduces the concept of base station operation, provides information to help you identify good setup locations, describes best practices for setting up the equipment, and outlines the precautions that you need to take to protect the equipment. Real-Time Kinematic (RTK) operation.

Many remote areas lack access to traditional power grids, yet base stations require 24/7 uninterrupted power supply to maintain stable communication services. For base stations located in deserts or other extreme environments, independent power supply is essential, as these areas are not only.

What is a power distribution network?

To understand it, it'd be useful to take a step back and look at the energy system as a whole. The global energy system is a vast and complex network that supplies

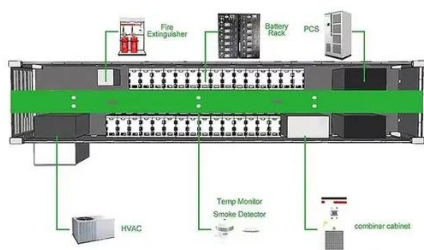


energy to homes and businesses across the entire planet. It includes everything from power plants.

Micro base stations require specialized antennas to ensure efficient signal transmission, coverage, and capacity in cellular networks, particularly for 4G LTE and 5G deployments. The choice of antenna depends on factors like deployment environment, frequency bands, and network architecture. 1.



What is a power network directional base station



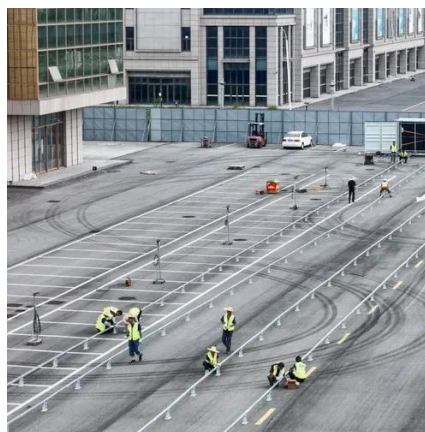
Base station

Overview Wireless communications Land surveying Computer networking See also

In radio communications, a base station is a wireless communications station installed at a fixed location and used to communicate as part of one of the following: o a push-to-talk two-way radio system, or; o a wireless telephone system such as cellular CDMA or GSM cell site.

Base Stations

The present-day tele-space is incomplete without the base stations as these constitute an important part of the modern-day scheme ...



[Communication Base Station Energy Solutions](#)

During the day, the solar system powers the base station while storing excess energy in the battery. At night, the energy storage system ...

Base Stations

The present-day tele-space is incomplete without the base stations as these constitute an important part of the modern-day scheme of wireless communications. They are ...



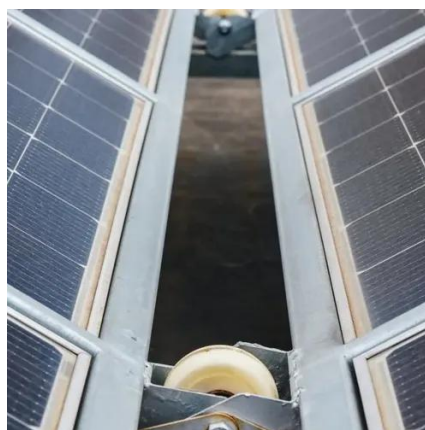
[Cellular Micro Base Station Antennas for Coverage ...](#)

Micro base stations use several antenna types, including panel (directional), omni-directional, small cell, Massive MIMO, ...



[Base Station Antenna Types: A Comprehensive ...](#)

Learn about the different types of base station antennas, their features, applications, and advantages. This guide will help you choose the best ...



Directional Power Control of 5G Radio Base Stations for EMF ...

When the electromagnetic field (EMF) compliance boundary of a radio base station (RBS) is determined based on the actual maximum EMF exposure condition accordin



Base station operation guidelines



This topic introduces the concept of base station operation, provides information to help you identify good setup locations, describes best practices for setting up the equipment, and ...



Power Distribution Network: What Is It and What Are the Types?

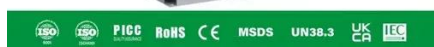
When power from one direction fails, switches automatically or manually divert energy to keep electricity flowing in the other direction. The loop guarantees higher standards of reliability than ...

[Power Distribution Network: What Is It and What ...](#)

When power from one direction fails, switches automatically or manually divert energy to keep electricity flowing in the other direction. The loop ...



114KWh ESS



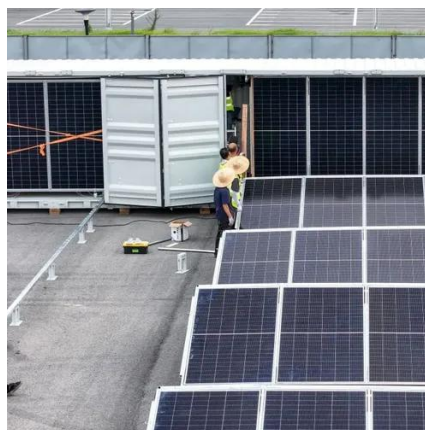
Base station

In the area of wireless computer networking, a base station is a radio receiver/transmitter that serves as the hub of the local wireless network, and may also be the gateway between a wired ...

[Base Station Antenna Types: A Comprehensive Guide](#)

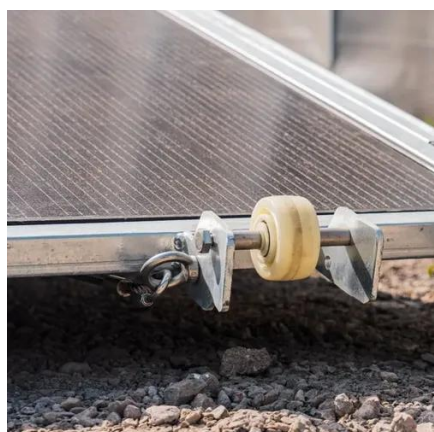


Learn about the different types of base station antennas, their features, applications, and advantages. This guide will help you choose the best antenna for your wireless network.



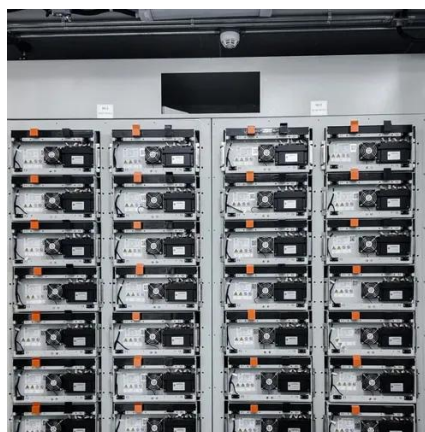
Power Base Station

If an adjacent base-station transmission (UTRA or LTE) is detected under certain conditions, the maximum allowed Home base-station output power is reduced in proportion to how weak the ...



Communication Base Station Energy Solutions

During the day, the solar system powers the base station while storing excess energy in the battery. At night, the energy storage system discharges to supply power to the base station, ...



Microsoft Word

In the U.S., systems are traditionally based on a hexagonal cellular layout with omni-directional antennas in the center of each cell. It was soon discovered that the use of directional antennas ...



Cellular Micro Base Station Antennas for Coverage Expansion



Micro base stations use several antenna types, including panel (directional), omni-directional, small cell, Massive MIMO, beamforming, mmWave, and integrated/embedded ...





Contact Us

For catalog requests, pricing, or partnerships, please visit:

<https://www.asimer.es>

Phone: +34 910 56 87 42

Email: info@asimer.es

Scan the QR code to access our WhatsApp.

