



# What is battery BMS intelligent control system





## Overview

---

A battery management system (BMS) is an intelligent electronic control unit that monitors, manages, and protects battery packs, primarily evaluating lithium-ion battery systems.

A battery management system (BMS) is an intelligent electronic control unit that monitors, manages, and protects battery packs, primarily evaluating lithium-ion battery systems.

A battery management system (BMS) is any electronic system that manages a rechargeable battery (cell or battery pack) by facilitating the safe usage and a long life of the battery in practical scenarios while monitoring and estimating its various states (such as state of health and state of).

Battery management system (BMS) is technology dedicated to the oversight of a battery pack, which is an assembly of battery cells, electrically organized in a row x column matrix configuration to enable delivery of targeted range of voltage and current for a duration of time against expected load.

A Battery Management System (BMS) is an electronic control unit that monitors and manages rechargeable battery packs to ensure safe operation, optimal performance, and extended lifespan. This sophisticated technology acts as the brain of modern battery systems, protecting against dangerous.

As the "intelligent brain" of battery packs, BMS operates safely and reliably in complex application environments through real-time monitoring, intelligent protection, and precise management, which is directly related to driver safety and vehicle performance. Understanding what BMS means is.

Did you know a battery management system (BMS) protects cells from dangerous conditions that can trigger thermal runaway and combustion?

This vital technology guards modern battery packs, especially when you have lithium-ion cells. These cells pack the highest energy density but need careful.

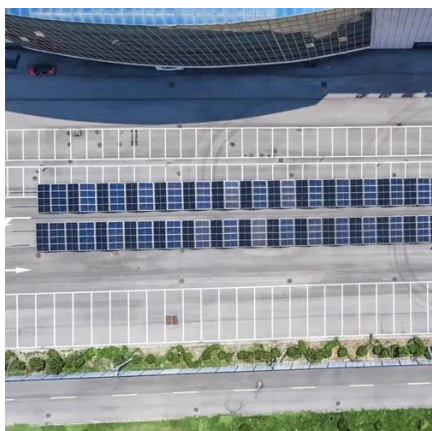
A Battery Management System (BMS) is a digital control system designed to monitor, protect, balance, and optimize the operation of battery cells in an energy



storage system. It acts as the central intelligence layer between battery cells and the application they serve—whether in electric vehicles.



## What is battery BMS intelligent control system



### [What Is a BMS in Batteries? Definition, Functions, ...](#)

A Battery Management System (BMS) is an intelligent electronic system that monitors and controls a rechargeable battery pack ...

### **What Is a BMS in Batteries? Definition, Functions, and Applications**

A Battery Management System (BMS) is an intelligent electronic system that monitors and controls a rechargeable battery pack to ensure safe operation, optimal ...

#### ESS



### [What is a Battery Management System?](#)

Battery management systems range from simple to complex and can embrace a wide range of different technologies to achieve their prime ...

### [What Is a BMS? Battery Management System Explained](#)

A Battery Management System (BMS) is a digital control system designed to monitor, protect, balance, and optimize the operation of battery cells in an energy storage system.



### [What is a Battery Management System? Complete ...](#)

A Battery Management System (BMS) is an electronic control unit that monitors and manages rechargeable battery packs to ensure ...



### [What is a Battery Management System?](#)

Battery management systems range from simple to complex and can embrace a wide range of different technologies to achieve their prime directive to "take care of the battery."



### [Battery Management System BMS Explained: ...](#)

What Is a Battery Management System BMS? A battery management system BMS is an electronic control unit designed to ...



### [What Is a Battery Management System \(BMS\)?](#)



It ensures safe operation, maximizes energy efficiency, and extends battery longevity by monitoring every cell in real time and executing control strategies accordingly. In ...



### Battery management system

A battery management system (BMS) is any electronic system that manages a rechargeable battery (cell or battery pack) by facilitating the safe usage and a long life of the battery in ...

**TAX FREE**

**Product Model**  
HJ-ESS-215A(100KW/215KWh)  
HJ-ESS-115A(50KW 115KWh)

**Dimensions**  
1600\*1280\*2200mm  
1600\*1200\*2000mm

**Rated Battery Capacity**  
215KWH/115KWH

**Battery Cooling Method**  
Air Cooled/Liquid Cooled

### [How Battery Management System Works in EVs, SETEC POWER](#)

A battery management system (BMS) is an intelligent electronic control unit that monitors, manages, and protects battery packs, primarily evaluating lithium-ion battery systems.

**Higher conversion efficiency**

CAN/RS485/WIFI/4G  
Blue tooth communication

20 Kwh 30 Kwh 50 Kwh

Thick shell, well protection for inside cells    BMS customization supported



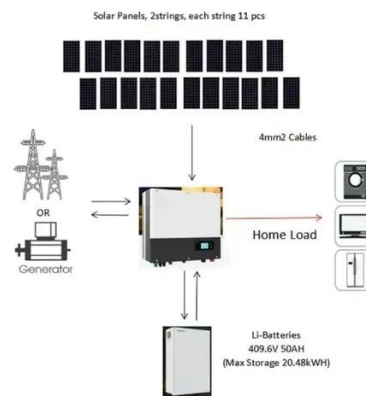
### What is a Battery Management System? Complete Guide to BMS ...

A Battery Management System (BMS) is an electronic control unit that monitors and manages rechargeable battery packs to ensure safe operation, optimal performance, and ...

### [Battery Management System \(BMS\) Detailed ...](#)



Battery Management System (BMS) is the "intelligent manager" of modern battery packs, widely used in fields such as electric ...



### [What Is a Battery Management System \(BMS\)?](#)

It ensures safe operation, maximizes energy efficiency, and extends battery longevity by monitoring every cell in real time and ...

### [Battery Management System \(BMS\) Detailed Explanation: ...](#)

Battery Management System (BMS) is the "intelligent manager" of modern battery packs, widely used in fields such as electric vehicles, energy storage stations, and consumer ...



### **Battery Management System BMS Explained: From Basic Safety to Smart Control**

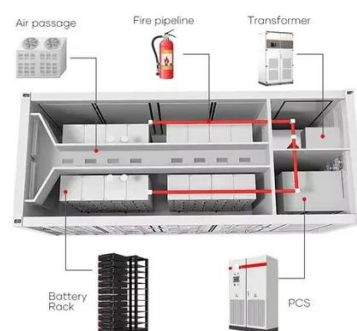
What Is a Battery Management System BMS? A battery management system BMS is an electronic control unit designed to monitor, regulate, and protect battery packs. ...



### **What is a Battery Management System (BMS)? Essential Guide ...**



The battery management system (BMS) acts as the electronic brain of modern rechargeable batteries. It monitors and controls vital functions that optimize performance and ...





## Contact Us

---

For catalog requests, pricing, or partnerships, please visit:

<https://www.asimer.es>

Phone: +34 910 56 87 42

Email: [info@asimer.es](mailto:info@asimer.es)

Scan the QR code to access our WhatsApp.

