



What is the lighting voltage of tool solar container lithium battery





Overview

What are primary lithium batteries used for?

Primary lithium batteries feature very high energy density, a long shelf life, high cost, and are non-rechargeable. They are generally used for portable consumer electronics, smoke alarms, light emitting diode (LED) lighting products, and outdoor devices.

What are the different voltage sizes of lithium batteries?

There are different voltage sizes of lithium batteries with the most popular being 12 volts, 24 volts, and 48 volts. Each one has a different voltage rating at a specific discharge capacity. It is also beneficial to understand the voltage and discharge rate of a 1-cell lithium battery.

How does voltage affect a lithium ion battery?

The voltage of a lithium ion battery directly correlates to the quantity of charge that can be stored there. The battery can hold more energy with a greater voltage. To avoid overheating or damaging the battery, the voltage must be properly regulated.

What is a lithium ion battery?

Lithium ion batteries are a type of rechargeable battery that is used in a wide variety of appliances. They are called lithium ion batteries because they use lithium ions as their primary charge carrier. The primary charge carrier's job is to move between the anode and the cathode during periods of charging and discharging.



What is the lighting voltage of tool solar container lithium battery



How to Read a Solar & Lithium Battery Storage System Diagram

A detailed guide on interpreting solar and lithium battery system diagrams. Understand the key components and their connections for effective energy management.

How to Test a Solar Battery: A Comprehensive Guide for Optimal

Evaluate voltage readings by measuring the battery's open-circuit voltage with a multimeter. A fully charged lead-acid battery typically reads around 12.6 to 12.8 volts, while a ...

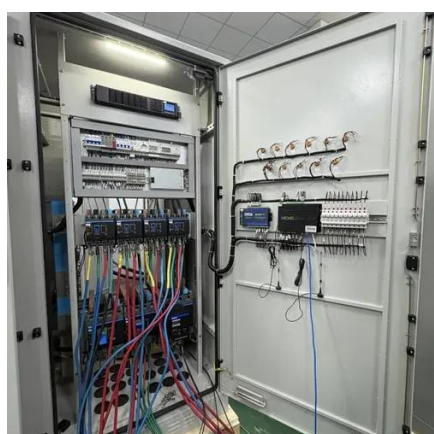


[How To Install Lithium Battery In Solar Light?](#)

Solar lights typically use 3.7V Li-ion (e.g., 18650 cells) or 3.2V LiFePO4 batteries. Li-ion offers higher energy density for compact designs, while LiFePO4 provides longer cycle ...

[Lithium Batteries: Safety, Handling, and Storage](#)

Primary lithium batteries feature very high energy density, a long shelf life, high cost, and are non-rechargeable. They are generally used for portable consumer electronics, smoke alarms, light ...



[How To Test Lithium Ion Battery: A Step-by-Step ...](#)

For a lithium-ion battery 12V, a fully charged reading should fall between 12.6V and 13.6V. Analyze the Voltage: If the voltage is significantly lower ...

[Energy storage container, BESS container](#)

Adding Containerized Battery Energy Storage System (BESS) to solar, wind, EV charger, and other renewable energy applications can reduce energy costs, minimize carbon footprint, and ...



[Lithium Ion Battery Voltage Chart \(Voltage and Charge\)](#)

The article discusses the importance of understanding lithium ion battery voltage charts for solar system owners. It explains the basics of lithium ion batteries, their advantages, and their ...



[How many volts of battery are good for a small solar light](#)



To effectively power a small solar light, the typical voltage range for batteries is 6 to 12 volts and depending on the type of solar light and desired brightness level, battery ...



[How many volts of battery are good for a small ...](#)

To effectively power a small solar light, the typical voltage range for batteries is 6 to 12 volts and depending on the type of solar light ...



**200kWh
Battery Cluster**

[Lithium Ion Battery Voltage Chart \(Voltage and Charge\)](#)

Evaluate voltage readings by measuring the battery's open-circuit voltage with a multimeter. A fully charged lead-acid battery typically reads around 12.6 to 12.8 volts, while a ...



Lithium Battery Voltage Chart Guide

Unlike traditional lead-acid batteries, lithium batteries maintain a stable voltage across most of their discharge cycle. This makes them more efficient, predictable, and reliable ...

[How To Test Lithium Ion Battery: A Step-by-Step Guide](#)



For a lithium-ion battery 12V, a fully charged reading should fall between 12.6V and 13.6V. Analyze the Voltage: If the voltage is significantly lower than expected, such as below 10V, it ...



How to Test Solar Battery with Multimeter: Simple Steps for ...

Discover how to effectively test your solar battery with a multimeter in this comprehensive guide. Learn about the importance of regular testing, the different types of ...

[Energy storage container, BESS container](#)

Adding Containerized Battery Energy Storage System (BESS) to solar, wind, EV charger, and other renewable energy applications can reduce energy ...





Contact Us

For catalog requests, pricing, or partnerships, please visit:

<https://www.asimer.es>

Phone: +34 910 56 87 42

Email: info@asimer.es

Scan the QR code to access our WhatsApp.

