



What is the maximum output power of solar panels





Overview

Most residential panels in 2025 are rated 250–550 watts, with 400-watt models becoming the new standard. A 400-watt panel can generate roughly 1.6–2.5 kWh of energy per day, depending on local sunlight. To cover the average U.S. household's 900 kWh/month consumption, you typically.

Most residential panels in 2025 are rated 250–550 watts, with 400-watt models becoming the new standard. A 400-watt panel can generate roughly 1.6–2.5 kWh of energy per day, depending on local sunlight. To cover the average U.S. household's 900 kWh/month consumption, you typically.

About 97% of home solar panels installed in 2025 produce between 400 and 460 watts, based on thousands of quotes from the EnergySage Marketplace. But wattage alone doesn't tell the whole story. In fact, efficiency matters more than wattage when comparing solar panels—a higher wattage can simply.

Solar panels degrade slowly, losing about 0.5% output per year, and often last 25–30 years or more. Most residential panels in 2025 are rated 250–550 watts, with 400-watt models becoming the new standard. A 400-watt panel can generate roughly 1.6–2.5 kWh of energy per day, depending on local.

Because actual solar panel power output depends on more than just the wattage on the spec sheet. Efficiency, temperature, sunlight, shading, orientation, and even how the panels are tested all influence real performance. To make confident decisions, whether you're sizing a system, comparing.

Solar panel output measures the electricity a solar panel produces from sunlight. It's expressed in watts or kilowatt-hours (kWh) and directly impacts your energy savings. The more efficient your solar panels are, the more power they will generate for your home, and the higher your return on your.

Most home solar panels that installers offer in 2024 produce between 350 and 450 watts of power, based on thousands of quotes from the EnergySage Marketplace. Commercial and utility-scale solar installations use more powerful 500-watt solar panels. For residential applications, a typical solar.

A typical solar panel generates between 1.3 to 1.6 kilowatt-hours (kWh) per square



foot annually, though actual production varies significantly based on location, installation angle, and environmental conditions. This efficiency translates to approximately 15-18 watts per square foot under ideal. What is solar panel output?

Solar panel output is the actual amount of electricity a panel produces in real-world conditions, measured in kilowatt-hours (kWh) per day, month, or year. Output depends on sunlight, temperature, shading, orientation, and system design. Two panels with the same wattage can have very different energy output based on installation conditions.

How many Watts Does a solar panel produce?

Solar panel power output can get confusing fast. Is 400 watts good?

420 watts?

Should you opt for the 450-watt panel?

Is it worth the extra cost?

About 97% of home solar panels installed in 2025 produce between 400 and 460 watts, based on thousands of quotes from the EnergySage Marketplace.

What is solar panel wattage?

Solar panel wattage is the maximum amount of power a solar panel can produce under ideal conditions. It's measured in watts (W) and represents the panel's peak power output. For example, a 400-watt solar panel can generate up to 400 watts of electricity when exposed to full sunlight in a controlled test environment.

How much power does a home solar panel produce?

About 97% of home solar panels included in EnergySage quotes today have power output ratings between 400 and 460 watts. The most frequently quoted panels are around 450 watts, so we'll use this as an example.



What is the maximum output power of solar panels



[Solar Panel Power Output: What Your Home Really Gets Per ...](#)

Understanding solar panel output is crucial for making smart energy decisions. A typical solar panel generates between 1.3 to 1.6 kilowatt-hours (kWh) per square foot annually, ...

[What is the maximum wattage of solar panels?.. NenPower](#)

What is the maximum wattage of solar panels? To answer the query regarding the maximum wattage of solar panels, the average residential solar panel currently on the market ...



[What Is The Maximum Power Output From A Solar Panel](#)

Most home solar panels that installers offer in 2024 produce between 350 and 450 watts of power, based on thousands of quotes from the EnergySage Marketplace. Commercial ...



[How Much Energy Does a Solar Panel Produce in 2025?](#)

In 2025, standard residential solar panels produce between 390-500 watts of power, with high-efficiency models reaching 500+ watts. However, the actual energy output ...

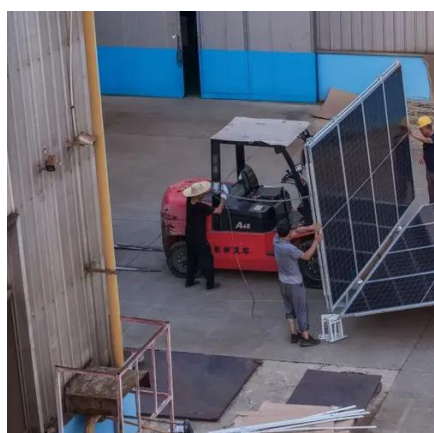


[Solar Panel Output: How Much Power Can You Expect?](#)

Every solar panel has a wattage rating -- typically between 350 and 450 watts for modern residential models. This rating has grown over time, so older panels may produce less ...

[Solar Panel Wattage & Output Explained](#)

Solar panel wattage is the maximum amount of power a solar panel can produce under ideal conditions. It's measured in watts (W) and represents the panel's peak power output.



Solar Panel Output Explained

Wattage: Wattage is the maximum power a panel can produce under ideal conditions, measured in watts. Think of it as the panel's potential output.

[How Much Energy Does A Solar Panel Produce?](#)



Most residential panels in 2025 are rated 250-550 watts, with 400-watt models becoming the new standard. A 400-watt panel can generate roughly 1.6-2.5 kWh of energy ...



[How Much Energy Does A Solar Panel Produce?](#)

Learn the solar panel output for major brands and panels, ...

[How Much Energy Does A Solar Panel Produce?](#)

Most residential panels in 2025 are rated 250-550 watts, with 400-watt models becoming the new standard. A 400-watt panel can ...

LIQUID COOLING ENERGY STORAGE SYSTEM

EMS real-time monitoring
No container design
flexible site layout

Cycle Life **≥ 8000** Nominal Energy **200kwh** IP Grade **IP55**

[Solar Panel Energy: Get Max Power From Your ...](#)

Solar panel efficiency describes how well a panel converts sunlight into usable electricity. It is expressed as a percentage. For ...



[How Much Energy Does A Solar Panel Produce? .. EnergySage](#)



Learn the solar panel output for major brands and panels, and how it affects the type and size of system you might end up installing.



[Solar Panel Output: How Much Power Can You ...](#)

Every solar panel has a wattage rating -- typically between 350 and 450 watts for modern residential models. This rating has grown ...

[Solar Panel Energy: Get Max Power From Your Panels](#)

Solar panel efficiency describes how well a panel converts sunlight into usable electricity. It is expressed as a percentage. For example, if a panel has 20% efficiency, it ...





Contact Us

For catalog requests, pricing, or partnerships, please visit:

<https://www.asimer.es>

Phone: +34 910 56 87 42

Email: info@asimer.es

Scan the QR code to access our WhatsApp.

