



What is the power source of the base station's stock battery





Overview

The 48V LiFePO₄ battery ensures that base stations stay operational even in the face of outages, safeguarding critical connections and maintaining the flow of data, voice, and messages without a hitch.

The 48V LiFePO₄ battery ensures that base stations stay operational even in the face of outages, safeguarding critical connections and maintaining the flow of data, voice, and messages without a hitch.

This guide covers everything you need to know about how your Base battery operates, protects your home, and supports the power grid. You'll also find answers to common battery myths and top tips to help you prepare for outages. Base batteries run in two directions, which is how Base is able to keep.

Telecom batteries refer to batteries that are used as a backup power source for wireless communications base stations. In the event that an external power source cannot be used, the telecom battery can provide a continuous power supply for the communication base station. Telecom batteries usually.

Telecom base station battery is a kind of energy storage equipment dedicatedly designed to provide backup power for telecom base stations, applied to supply continuous and stable power to base station equipment when the utility power is interrupted or malfunctions, which plays a vital role in the.

As the core nodes of communication networks, the performance of a base station's backup power system directly impacts network continuity and service quality. Among various battery technologies, Lithium Iron Phosphate (LiFePO₄) batteries stand out as the ideal choice for telecom base station backup.

Telecom base stations operate 24/7, regardless of the power grid's reliability. In many areas of rural zones, disaster-prone regions, or developing countries, the grid is unstable or absent. And while diesel generators are still in use, they come with high fuel costs, maintenance burdens, and.

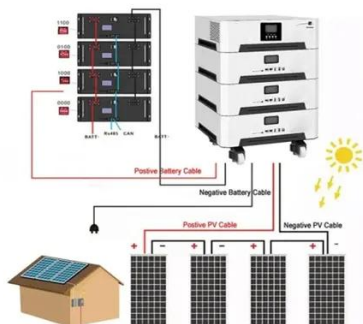
Base station energy storage batteries play a critical role in enhancing efficiency and reliability in telecommunication networks. Their primary purpose is **1. to ensure continuous power supply during outages, **2. to optimize energy



consumption by storing excess energy generated from renewable.



What is the power source of the base station s stock battery

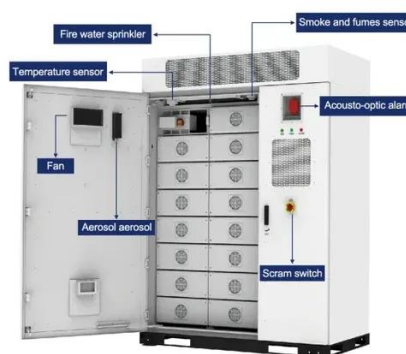


Base Stations

Power Supply: The power source provides the electrical energy to base station elements. It often features auxiliary power supply ...

Telecom Base Station Backup Power Solution: ...

Among various battery technologies, Lithium Iron Phosphate (LiFePO4) batteries stand out as the ideal choice for telecom base station ...



What is the purpose of batteries at telecom base stations?

Telecom batteries refer to batteries that are used as a backup power source for wireless communications base stations. In the event that an external power source cannot be used, the ...



Overview of Telecom Base Station Batteries

In terms of technical realization, telecom energy storage systems usually adopt lead-acid batteries or lithium ion solar batteries as the energy ...



[How the Base battery works: A complete guide to ...](#)

This guide covers everything you need to know about how your Base battery operates, protects your home, and supports the power grid. You'll also ...

[What is the purpose of batteries at telecom base ...](#)

Telecom batteries refer to batteries that are used as a backup power source for wireless communications base stations. In the event that an external ...



[How about base station energy storage batteries, NenPower](#)

Renewable energy sources, such as solar and wind, play an integral role in energy storage systems for base stations. By integrating storage solutions with renewable generation, ...



Telecom Base Station Backup Power Solution: Design Guide for ...



Among various battery technologies, Lithium Iron Phosphate (LiFePO4) batteries stand out as the ideal choice for telecom base station backup power due to their high safety, ...



Base Stations

Power Supply: The power source provides the electrical energy to base station elements. It often features auxiliary power supply mechanisms that guarantee operation in ...

Revolutionising Connectivity with Reliable Base Station Energy ...

Base station energy storage refers to batteries and supporting hardware that power the BTS when grid power is unavailable or to smooth out intermittent renewable sources like ...



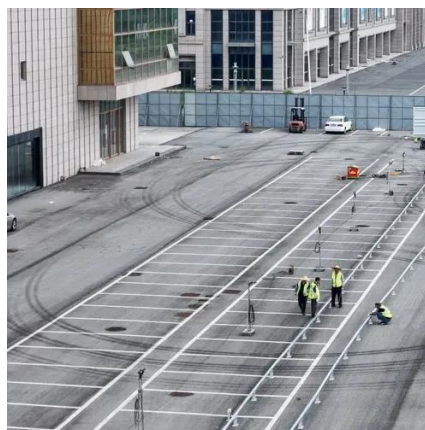
Telecom Base Station Battery

Uninterrupted Power Supply: Our batteries provide immediate backup power during grid outages, ensuring continuous operation of base stations and maintaining network stability. Support for ...

NYCEDC Advances Green Economy Action Plan with Support of ...



When built, the facility will be able to hold up to 100 megawatts (MW) and power over tens of thousands of households. Once completed, the project will be amongst the largest ...



48V lifepo4 lithium battery telecommunication base stations ...

These stations require a reliable and constant energy source to ensure uninterrupted communication. Enter the 48V LiFePO4 battery - a robust solution that rises to the challenge, ...

Telecom Base Station Battery

Uninterrupted Power Supply: Our batteries provide immediate backup power during grid outages, ensuring continuous operation of base stations and ...



[48V lifepo4 lithium battery telecommunication base ...](#)

These stations require a reliable and constant energy source to ensure uninterrupted communication. Enter the 48V LiFePO4 battery - a robust ...



[How the Base battery works: A complete guide to grid ...](#)



This guide covers everything you need to know about how your Base battery operates, protects your home, and supports the power grid. You'll also find answers to common battery myths ...



NYCEDC Advances Green Economy Action Plan with Support of Major Battery

When built, the facility will be able to hold up to 100 megawatts (MW) and power over tens of thousands of households. Once completed, the project will be amongst the largest ...



Overview of Telecom Base Station Batteries

In terms of technical realization, telecom energy storage systems usually adopt lead-acid batteries or lithium ion solar batteries as the energy storage medium.



How about base station energy storage batteries

Renewable energy sources, such as solar and wind, play an integral role in energy storage systems for base stations. By integrating ...





Contact Us

For catalog requests, pricing, or partnerships, please visit:

<https://www.asimer.es>

Phone: +34 910 56 87 42

Email: info@asimer.es

Scan the QR code to access our WhatsApp.

