



# What is the power supply used in base stations called





## Overview

---

In communications, a base station is a communications station installed at a fixed location and used to communicate as part of one of the following: • a system, or; • a system such as or .

This term covers the whole power infrastructure at a telecom base station, including everything from power supplies and backup systems to energy storage.  
Power Supply Units: The main source of energy for telecom operations. Energy Storage: Batteries that store excess power for later.

This term covers the whole power infrastructure at a telecom base station, including everything from power supplies and backup systems to energy storage.  
Power Supply Units: The main source of energy for telecom operations. Energy Storage: Batteries that store excess power for later.

Telecom base stations are at the heart of global communication networks, providing the backbone for cellular and internet services. Over the years, various terms have been used to describe the energy solutions that keep these stations running smoothly. This article takes a closer look at some of.

Power Supply: The power source provides the electrical energy to base station elements. It often features auxiliary power supply mechanisms that guarantee operation in case of lost or interrupted electricity, during blackouts. Baseband Processor: The baseband processor is responsible for the.

As a result, a variety of state-of-the-art power supplies are required to power 5G base station components. Modern FPGAs and processors are built using advanced nanometer processes because they often perform calculations at fast speeds using low voltages (<0.9 V) at high current from compact.

Base station (or base radio station, BS) is - according to the International Telecommunication Union 's (ITU) Radio Regulations (RR) [1] - a " land station in the land mobile service." A base station is called node B in 3G, eNB in LTE (4G), and gNB in 5G. The term is used in the context of mobile.

Telecom base stations are typically located in remote areas or urban locations with fluctuating power quality. While the grid supplies the primary power, these base stations must have a backup plan in case of outages or voltage instability. This is where Uninterruptible Power Supply (UPS) systems.



Telecom base stations are the backbone of modern communication networks, enabling seamless connectivity for mobile telephony, Internet services and emergency communications. These Telecom base stations are highly dependent on a stable power supply for efficient operation. However, power outages.



## What is the power supply used in base stations called



### Different English Terms for Telecom Base Station Power Systems

For telecom base stations located in remote areas where the power grid may not be available, the term "Remote Base Station Hybrid Energy System" is often used.

### [UPS Batteries in Telecom Base Stations - leagend](#)

While the grid supplies the primary power, these base stations must have a backup plan in case of outages or voltage instability. This is where Uninterruptible Power ...



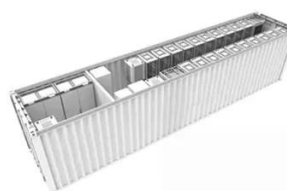
### A Beginner's Guide to Understanding Telecom Power Supply ...

Telecom power supply systems, particularly UPS systems, ensure that communication networks remain operational even during a power failure. A UPS, or ...



### [Selecting the Right Supplies for Powering 5G Base Stations](#)

A single RoHS compliant BGA package integrates a switching controller, power switches, an inductor, and all the supporting components. In some cases, to maximize power supply ...



### Base station

Base stations use RF power amplifiers (radio-frequency power amplifiers) to transmit and receive signals.

### Base Stations

Power Supply: The power source provides the electrical energy to base station elements. It often features auxiliary power supply mechanisms that guarantee operation in ...



### [UPS Batteries in Telecom Base Stations - leagend](#)

While the grid supplies the primary power, these base stations must have a backup plan in case of outages or voltage instability. This is ...



### [A Beginner's Guide to Understanding Telecom ...](#)



Telecom power supply systems, particularly UPS systems, ensure that communication networks remain operational even during a ...



### Power Base Station

Maximum base station power is limited to 24 dBm output power for Local Area base stations and to 20 dBm for Home base stations, counting the power over all antennas (up to four).

### Base Stations

Power Supply: The power source provides the electrical energy to base station elements. It often features auxiliary power supply ...



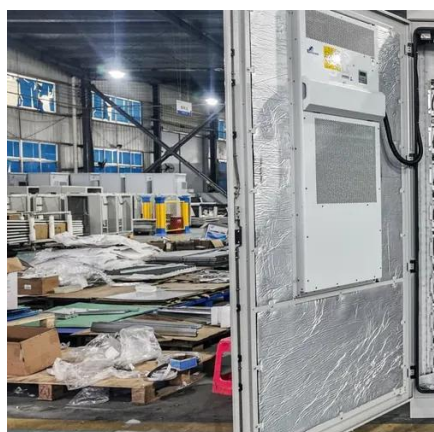
### Management and maintenance of base station switching power supply

Compared with linear power supplies and phase-controlled power supplies, switching power supplies have the characteristics of high power conversion efficiency ...

[What is the purpose of batteries at telecom base stations?](#)



Telecom batteries refer to batteries that are used as a backup power source for wireless communications base stations. In the event that an external power source cannot be used, the ...



### [Selecting the Right Supplies for Powering 5G Base Stations](#)

A single RoHS compliant BGA package integrates a switching controller, power switches, an inductor, and all the supporting components. In some cases, to maximize power supply ...

### Base station

Overview Wireless communications Land surveying Computer networking See also

In radio communications, a base station is a wireless communications station installed at a fixed location and used to communicate as part of one of the following: o a push-to-talk two-way radio system, or; o a wireless telephone system such as cellular CDMA or GSM cell site.



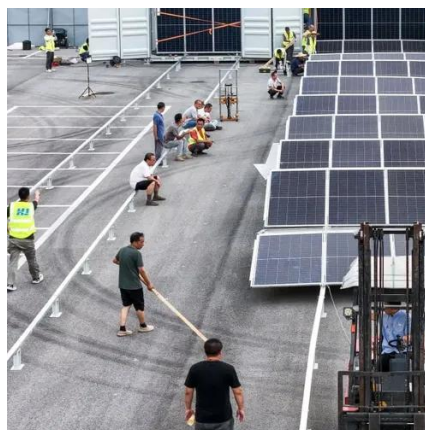
### Power Supply Solutions for Wireless Base Stations Applications

Power supplies can be employed in each of the three systems that compose wireless base stations. These three systems are known as the environmental monitoring system, the data ...



## Management and maintenance of base station ...

Compared with linear power supplies and phase-controlled power supplies, switching power supplies have the characteristics of high ...



## What is the purpose of batteries at telecom base ...

Telecom batteries refer to batteries that are used as a backup power source for wireless communications base stations. In the event that an external ...



## Contact Us

---

For catalog requests, pricing, or partnerships, please visit:

<https://www.asimer.es>

Phone: +34 910 56 87 42

Email: [info@asimer.es](mailto:info@asimer.es)

Scan the QR code to access our WhatsApp.

