



What is the size of a 100 watt solar panel





Overview

A typical 100-watt solar panel is 41.8 inches long and 20.9 inches wide. It takes up 6.07 sq ft of area. If you have a 1000 sq ft roof, and you can use 75% of that roof area for solar panels, you can theoretically put 123 100-watt solar panels on a 1000 sq ft roof.

A typical 100-watt solar panel is 41.8 inches long and 20.9 inches wide. It takes up 6.07 sq ft of area. If you have a 1000 sq ft roof, and you can use 75% of that roof area for solar panels, you can theoretically put 123 100-watt solar panels on a 1000 sq ft roof.

Example: 5kW solar system is comprised of 50 100-watt solar panels. Alright, your roof square footage is 1000 sq ft. Can you put a 5kW solar system on your roof?

For that, you will need to know what size is a typical 100-watt solar panel, right?

To bridge that gap of very useful knowledge needed.

One key factor is their size, particularly when it comes to a 100-watt solar panel. Why does this matter?

For anyone considering solar energy—whether for a small cabin, an RV, or a larger home installation—knowing the dimensions of a solar panel can significantly impact your decision-making.

The 100-watt solar panel represents a common entry point into off-grid power generation for many users. This wattage is frequently used in portable applications, serving as a reliable charging source for small electronics, maintaining the charge on automotive or marine batteries, or running.

Understanding the size of a 100 watt solar panel is crucial for anyone considering solar energy solutions for their home, RV, or off-grid applications. Solar panels are measured in watts, which indicates their power output under standard test conditions. A 100 watt solar panel is a compact option.

But just how big is a 100-watt solar panel?



And what factors should be considered when choosing one?

In this article, we will dive into these questions and explore everything you need to know about the size of a 100-watt solar panel. What Is a Solar Panel?

Before we delve into the specifics of.

The main specifications that you want to look out for when purchasing a 100-watt solar panel would be the weight, the dimensions, cell type maximum power, maximum power voltage, maximum power current, maximum system voltage, and the warranty. Weight: 20lb Dimensions Folded: 26.5 x 20 x 2 in.



What is the size of a 100 watt solar panel



How Big is a 100W Solar Panel? Dimensions and Uses Explained

In this article, we will explore the physical dimensions of a 100-watt solar panel, typically ranging from 3 to 4 feet in length and 2 to 3 feet in width. We will also discuss the ...

[Solar Panel Size & Dimensions Guide 2025.. Complete Specs](#)

Solar panel size is measured in watts (W) and indicates how much electricity the panel can produce under standard test conditions. Here's the key distinction every homeowner ...



Solar Panel Dimensions - zoupw

Each 100W panel occupies about 5.3 square feet. Therefore, 67 panels would require approximately 355 square feet of roof space. Keep in mind that factors like roof orientation, ...

[100 watt solar panel dimensions chart](#)

As you can see from the chart above, 100 watt solar panels come in a variety of sizes and shapes. Some panels are long and narrow, while others are more square or rectangular. The weight of ...



How Big is a 100W Solar Panel?

The size of a 100-watt solar panel varies depending on the type and manufacturer. In general, it can range from 32 inches x 20 ...



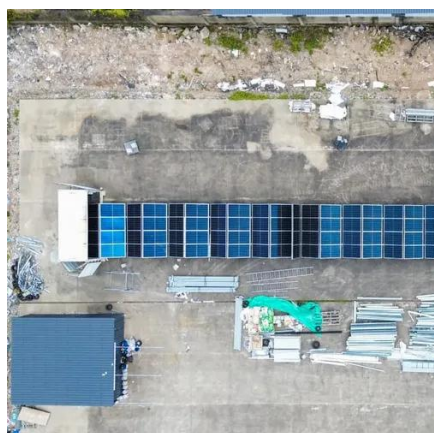
[Understanding 100 Watt Photovoltaic Panel Dimensions](#)

Ever wondered why solar panels come in different shapes and sizes like pizza boxes versus king-size mattresses? The physical dimensions of a 100W photovoltaic panel directly impact where ...



How Big is a 100W Solar Panel?

The size of a 100-watt solar panel varies depending on the type and manufacturer. In general, it can range from 32 inches x 20 inches for a monocrystalline panel to 47 inches x ...



[Standard Solar Panel Sizes And Wattages \(100W ...](#)



For that, you will need to know what size is a typical 100-watt solar panel, right? To bridge that gap of very useful knowledge needed, we have ...



100 Watt Solar Panel Specifications

The main specifications that you want to look out for when purchasing a 100-watt solar panel would be the weight, the dimensions, cell type maximum power, maximum power voltage, ...

[Standard Solar Panel Sizes And Wattages \(100W-500W ...](#)

For that, you will need to know what size is a typical 100-watt solar panel, right? To bridge that gap of very useful knowledge needed, we have compared and averaged the sizes of 100-watt ...



How Big Is a 100 Watt Solar Panel?

These dimensions mean the panel requires just under seven square feet of surface area for a flat installation. The thickness of the panel, which includes the aluminum ...



[Exploring the Size of a 100 Watt Solar Panel](#)



The typical dimensions of a 100 watt solar panel are approximately 47 inches by 21 inches (119 cm by 53 cm) and about 1.5 inches thick (4 cm). These dimensions can vary ...





Contact Us

For catalog requests, pricing, or partnerships, please visit:

<https://www.asimer.es>

Phone: +34 910 56 87 42

Email: info@asimer.es

Scan the QR code to access our WhatsApp.

